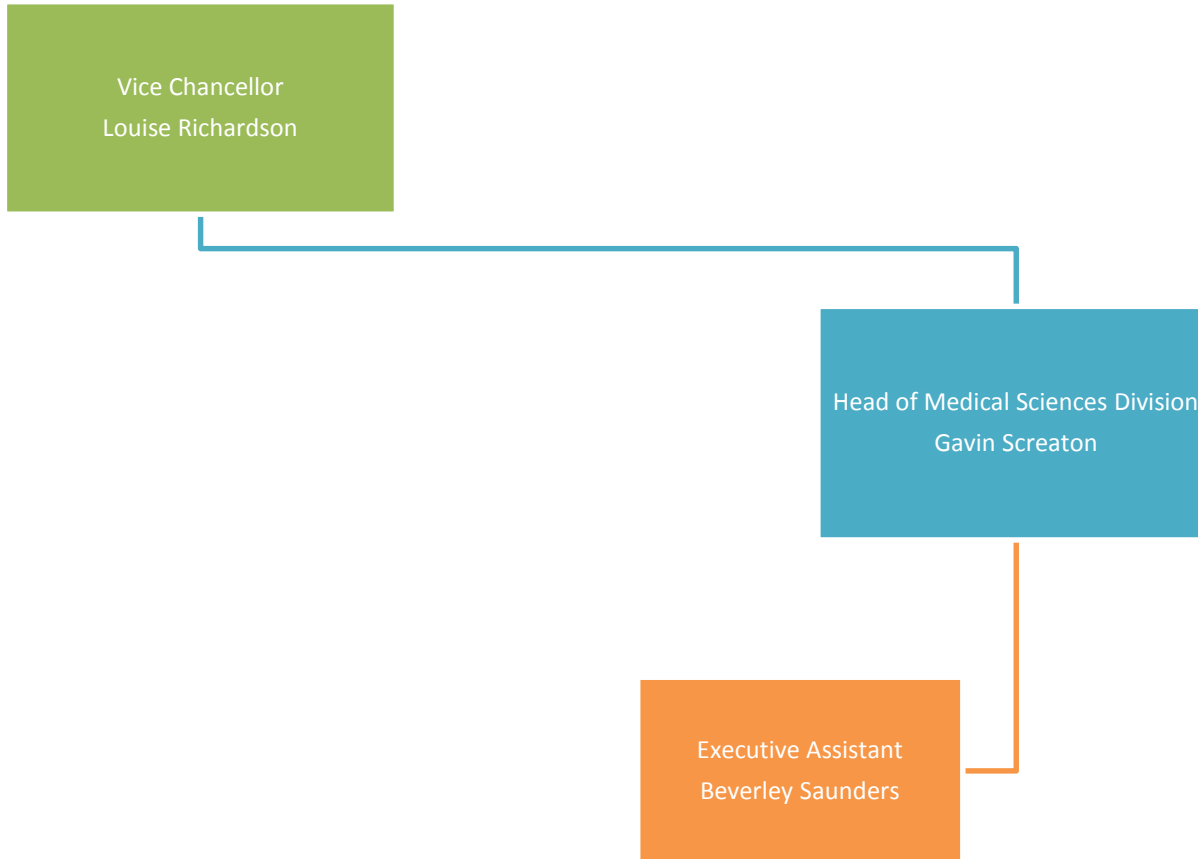
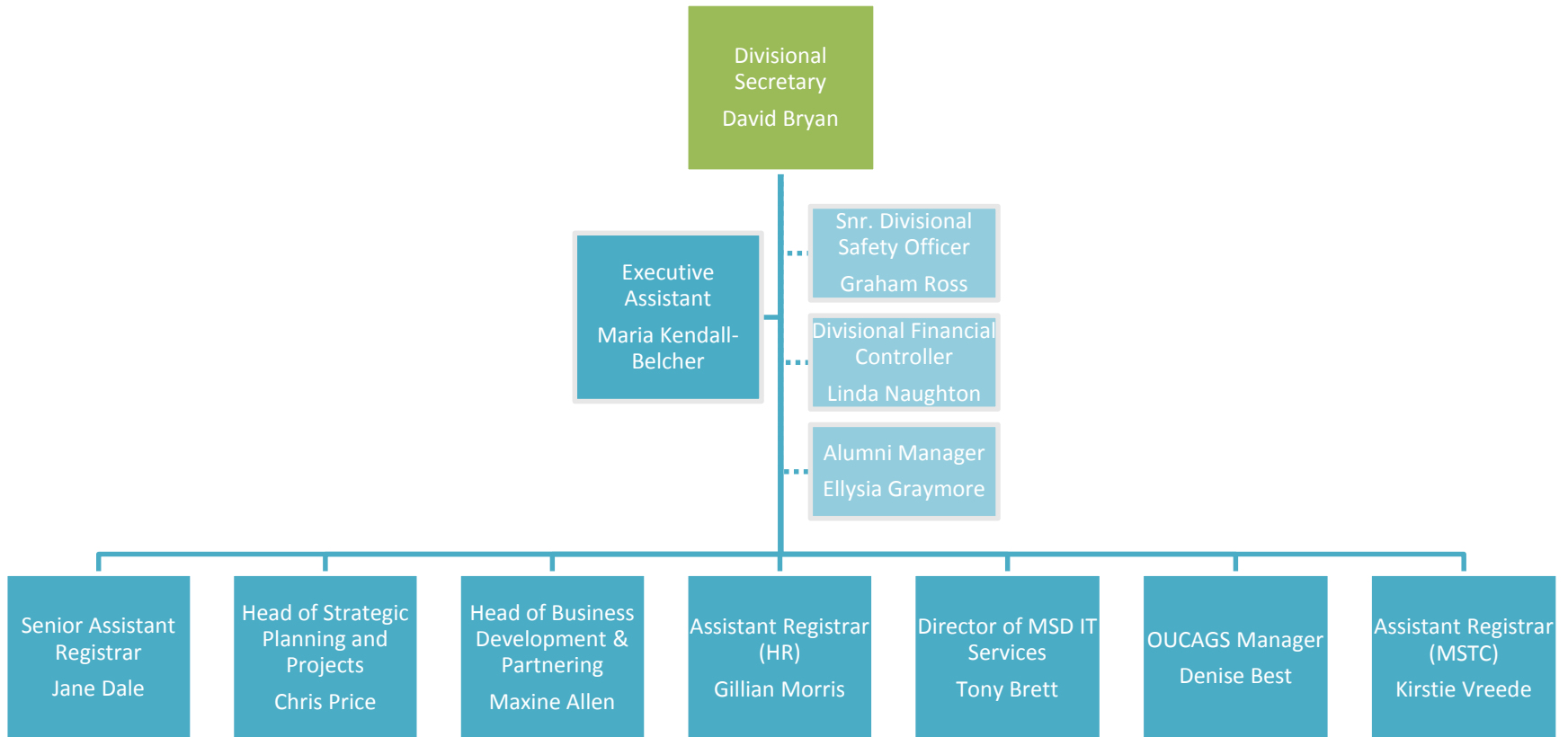


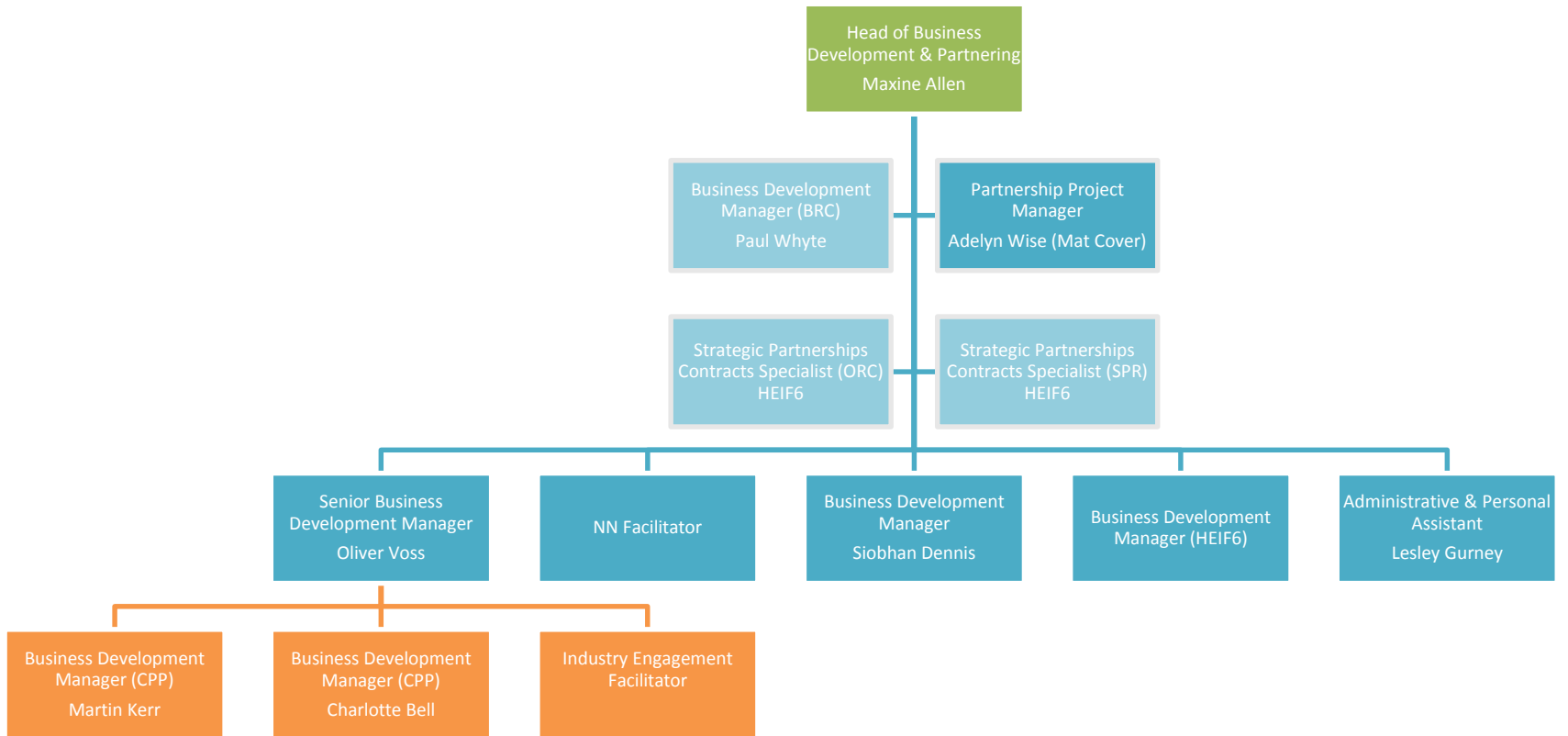
# Medical Sciences Division



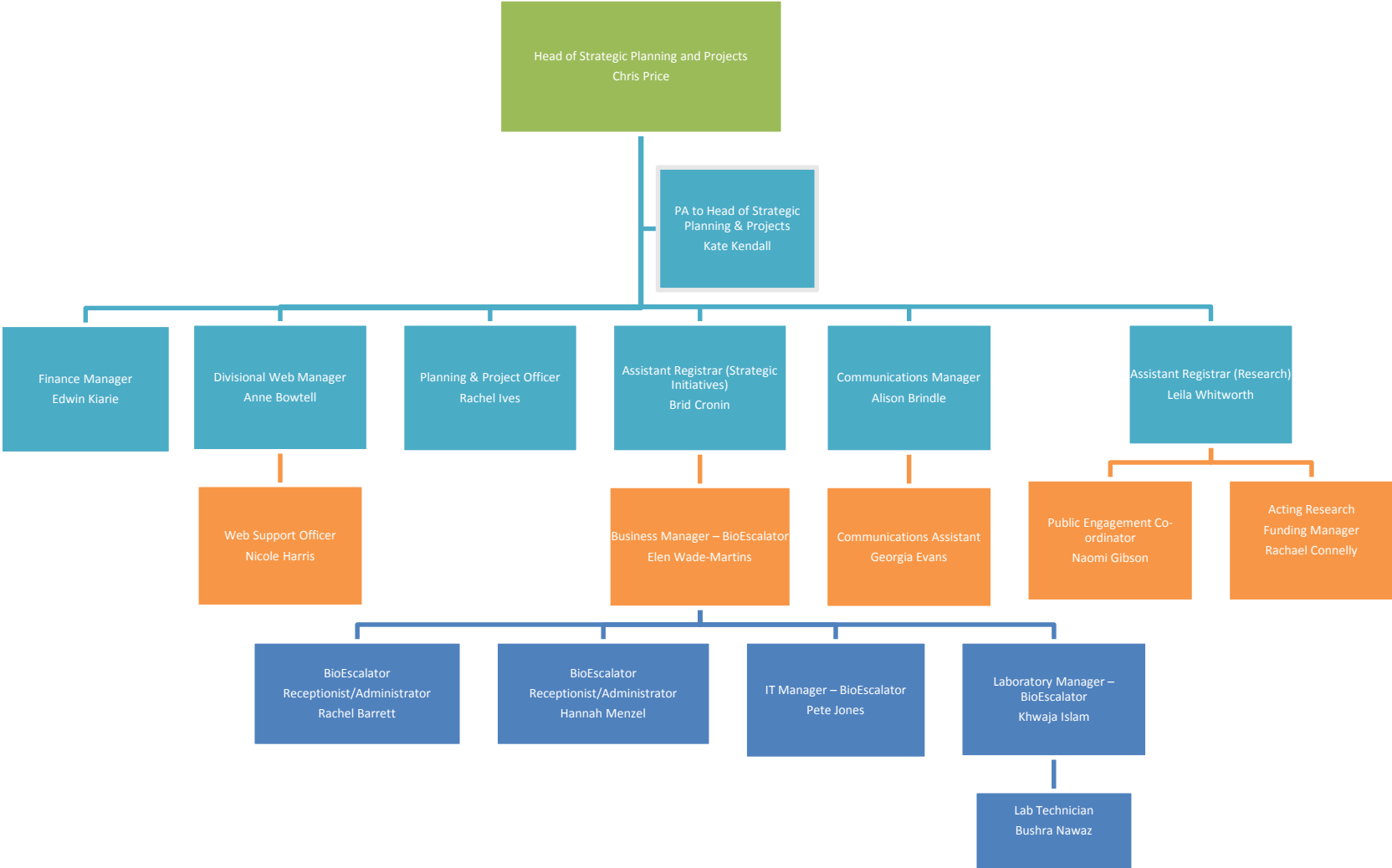
# Medical Sciences Divisional Office



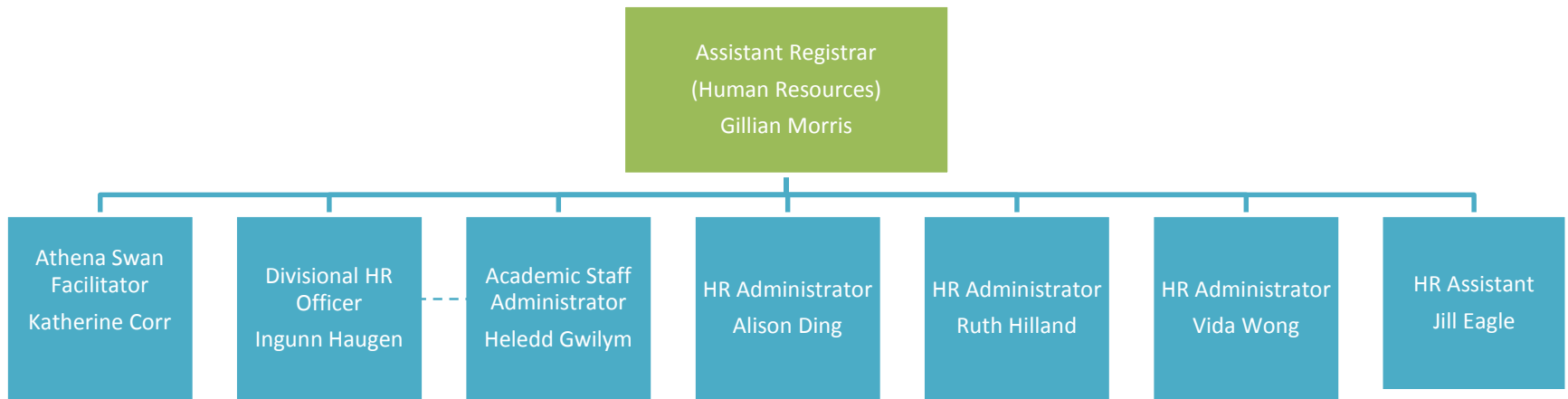
# Business Development and Partnering



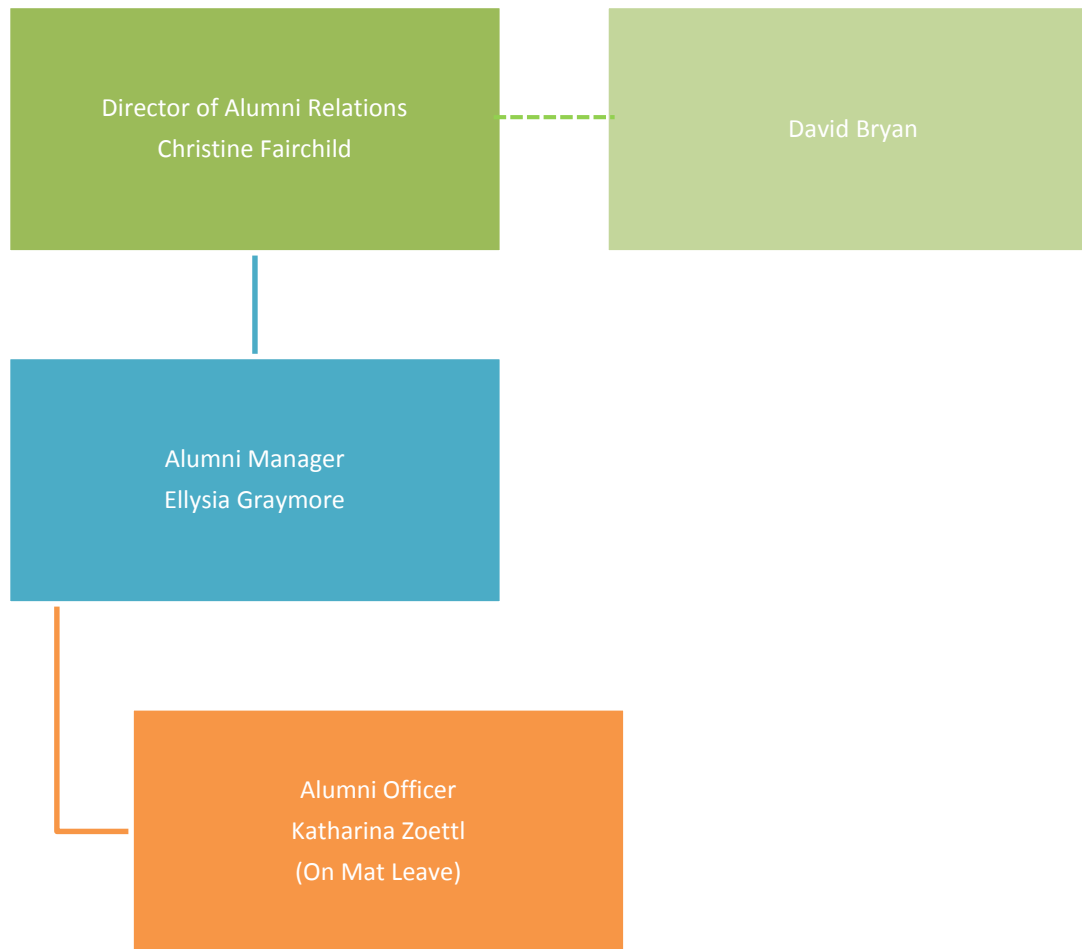
# Strategic Planning and Projects



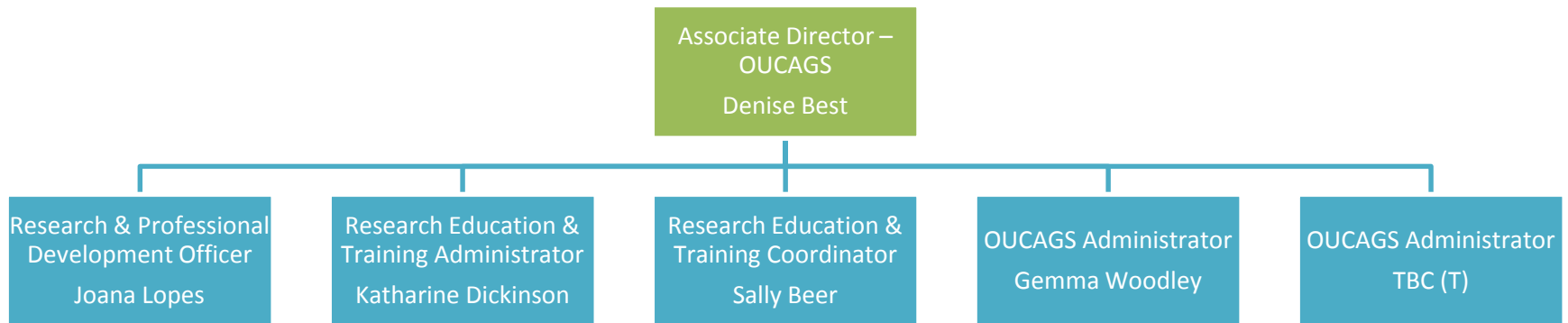
# MSDO Human Resources



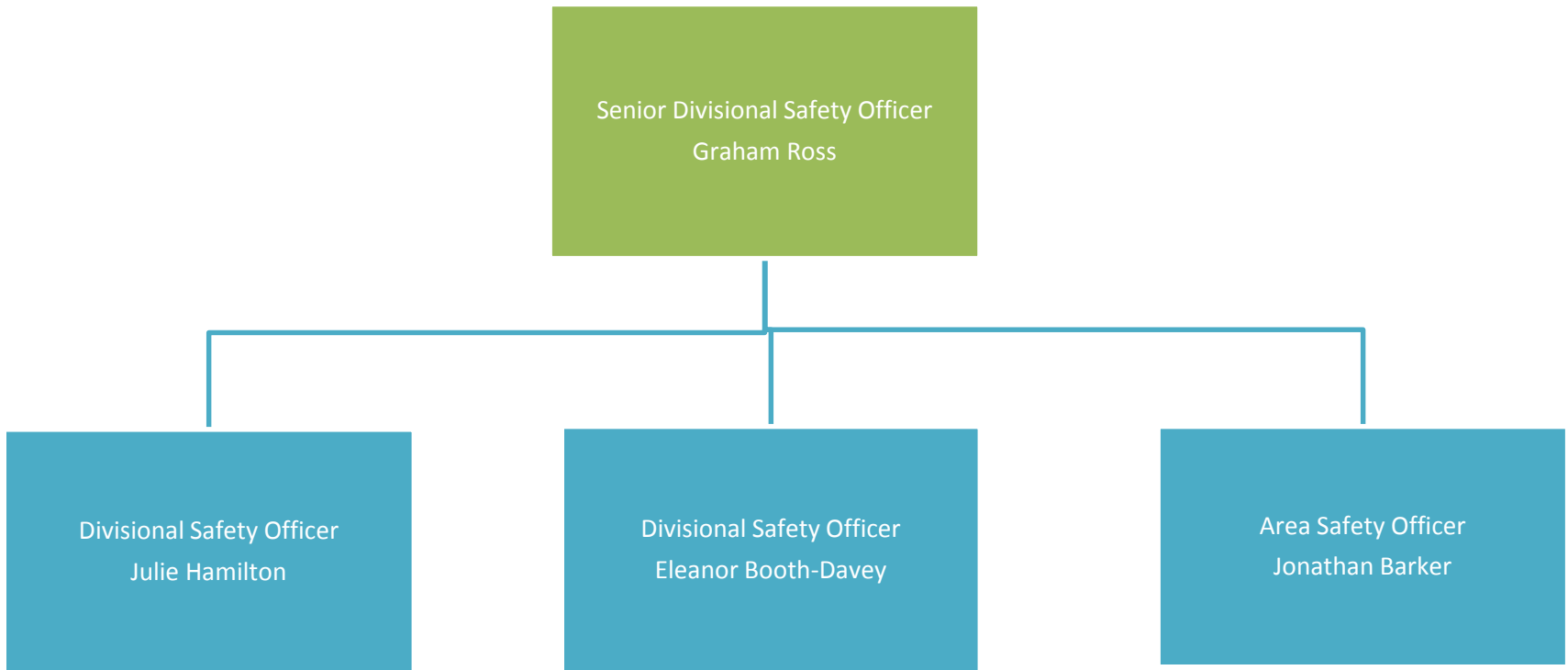
# Alumni Office



# Oxford University Clinical Academic Graduate School (OUCAGS)



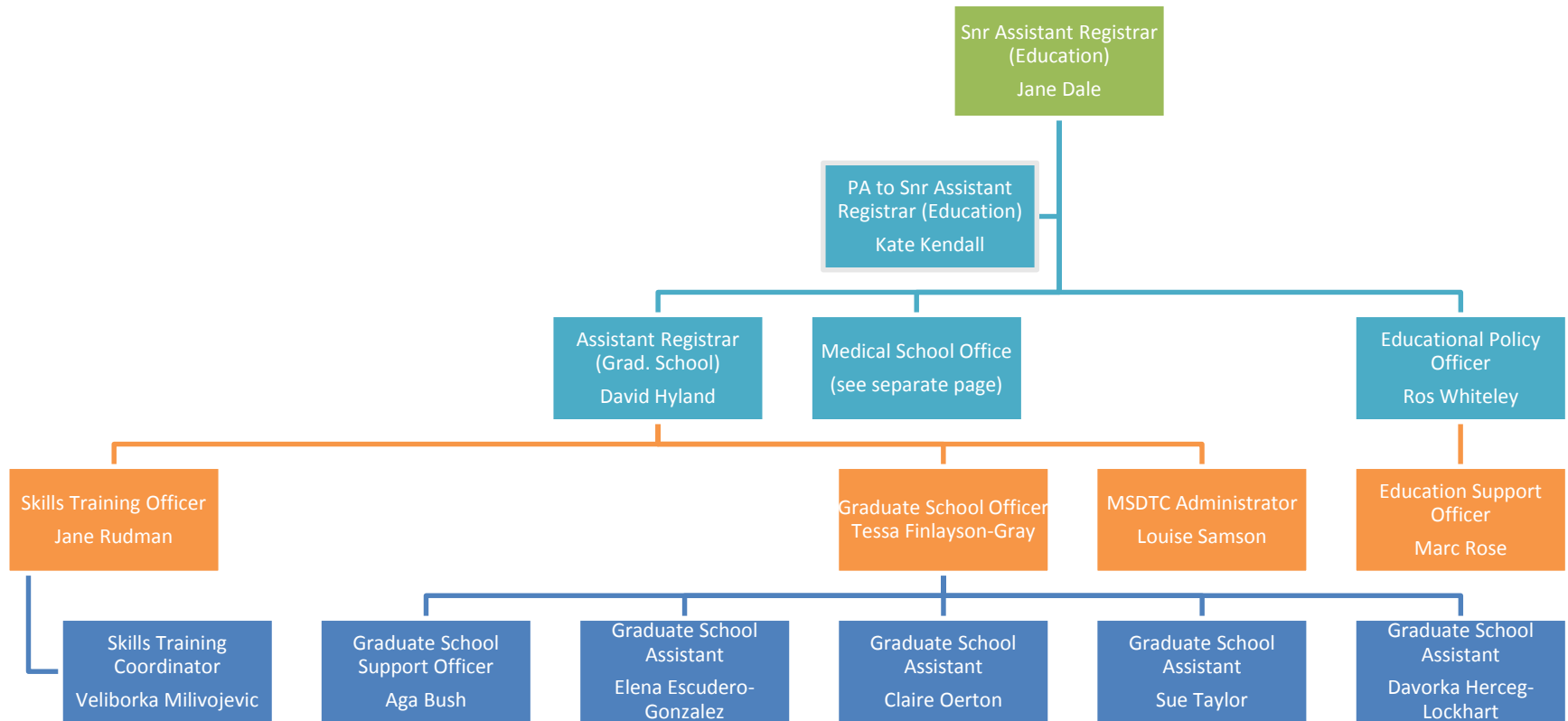
# Divisional Safety Office



Main Location: JR, Level 3 (via Cairns Library)

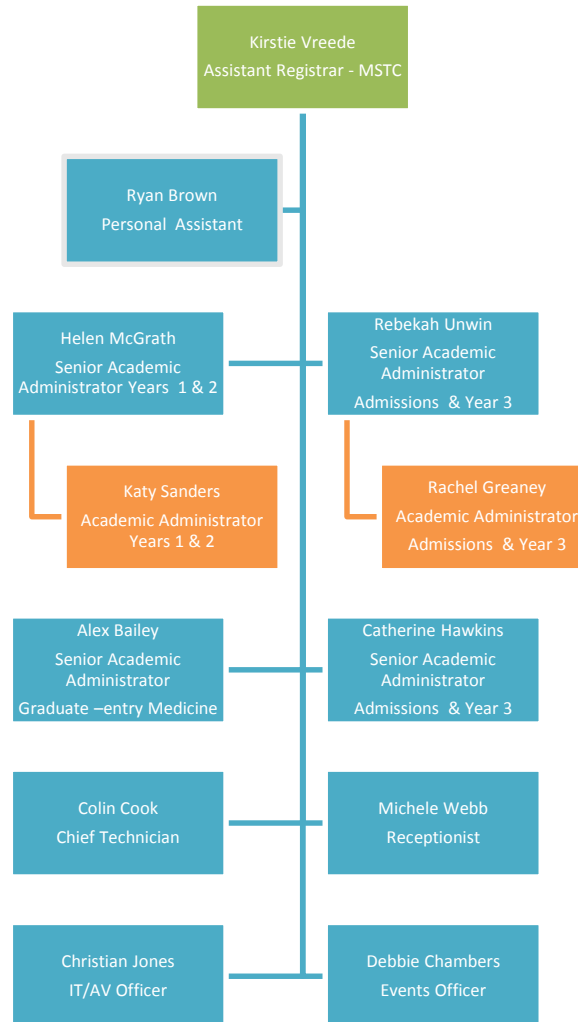


# Education Team (including Graduate School team)



# Medical Sciences Teaching Centre

## Years 1 - 3 (Pre-Clinical)



Main Location: MSTC, South Parks Road

# Medical School Office

## Years 4-6 (Clinical)

