

IN THIS ISSUE

[Tweet from your event!](#)

[Sixty Seconds with...Jayne Todd, Head of Alumni Relations, Oxford Medical Alumni](#)

[Lab Talk – Professors Christian Becker and Krina Zondervan, Endometriosis Care and Research \(CaRe\) Centre](#)

[Athena SWAN News](#)

[Library News](#)

[Board Business](#)

[Opportunities and Updates](#)

[And Finally...3 Minutes, 1 Slide...Your Thesis!](#)

TWEET FROM YOUR EVENT!



Are you involved in, organising or attending a public or patient engagement activity this Spring?

If so, please tell us all about it on Twitter using the hashtag #OxMedSciEngages. Tweets will be highlighted on our [website](#), alongside the [full programme of innovative, interesting and exciting events](#) that our researchers are taking part in, and are a great way to involve and engage different audiences, particularly those people who might not be able to attend events.

Additionally, if your event isn't listed, please email communications@medsci.ox.ac.uk and let us know.

Do you have news or events that you would like to promote? Or would you like your lab/centre/unit to feature in a future issue of Lab Talk? For further information, please contact communications@medsci.ox.ac.uk

Copy deadline for next issue: 09:00, Tuesday 7 April. Delivery date: Monday 13 April.

Sign up [here](#) to receive a weekly digest of all events/seminars/talks/workshops taking place across the Division.



SIXTY SECONDS WITH ...



This month, we speak to Jayne Todd, Head of Alumni Relations, Oxford Medical Alumni. Jayne spends her days engaging with our 17,500 medical alumni spread across the globe. In her spare time, she likes to nose around other people's houses, inspecting door knobs and hinges – all in aid of 'learning architectural vernacular' of course!

What is Alumni Relations in Oxford?

Alumni relations, or 'engagement', is about maintaining a positive relationship with our alumni so that the messages they share about Oxford will also be positive – and current. We keep them informed about our achievements and make them part of Oxford's future, not just its past. continue to apply to study and work here. Alumni are a direct source of support, advice and networking.

[Read more...](#)

LAB TALK

As [Endometriosis Awareness Week](#) (3–9 March) comes to an end, we speak to Professors Christian Becker and Krina Zondervan, co-Directors of the Endometriosis Care and Research (CaRe) Centre. The Centre, a collaboration between the Oxford University Hospitals



NHS Trust and the Nuffield Department of Obstetrics and Gynaecology (NDOG), integrates the highest standard of clinical care with cutting-edge, collaborative research into endometriosis, with the aims to improve our understanding of underlying causes, to find novel diagnostic approaches and to identify innovative, more focused therapies for this heterogeneous condition.

Tell us a little about your research area

We work on [endometriosis](#), a very common condition affecting up to 10% of women during their reproductive life span, in which cells that normally line the uterus (endometrium) are found outside the uterus, mostly in the pelvis. Endometriosis can cause severe pelvic pain and reduced fertility, and has considerable impact on the lives of sufferers and their families.

[Read more...](#)

ATHENA SWAN NEWS

In this issue:

- (1) [British Federation of Women Graduates Scholarship Competition](#)
- (2) [2015 L'Oréal-UNESCO For Women in Science UK & Ireland Fellowships](#)
- (3) [Talks and Events](#)
- (4) [Articles and Resources](#)

[Read more...](#)

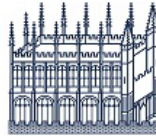


LIBRARY NEWS

In this issue:

- (1) [Open Access: What you need to know](#)
- (2) [Easter Holidays 2015 Opening Hours](#)
- (3) [2020 Vision: Making your research output compliant \(FOSTER\)](#)
- (4) [Oxford Gateway to Europe website launched](#)
- (5) [Bodleian iSkills](#)

[Read more...](#)



Bodleian Libraries
UNIVERSITY OF OXFORD

BOARD BUSINESS

In this regular feature, Dr David Bryan, Divisional Secretary, provides a summary of the Medical Sciences Board's activity

At its meetings earlier this term, the Medical Sciences Board:

- (1) agreed to recommend that on certain understandings a proposed HEFCE Research Partnership Infrastructure Fund bid for a Vaccines and Immunology Building on the University's Old Road Campus be submitted;
- (2) welcomed Sir Gordon Duff, the Principal of St Hilda's, to his first meeting of the Board as a nominee of the Conference of Colleges;

[Read more...](#)

OPPORTUNITIES AND UPDATES

Important Updates

- University becomes full corporate member of Understanding Animal Research Services** and training opportunities available for staff and students
- Workshop: A Guide to the NHS Information Governance Toolkit** Monday 23 March 2015, 14:00 – 16:00
- The ORDS – Oxford's Online Research Database Service** A tool for researchers – to aid effective data management
- Oxford Gateway to Europe** New website launched to give guidance on European funding-related activities and support at Oxford
- Call for new Oxford Research Staff Society Committee Members** Do you want to get more involved in the Oxford Research Staff Society?
- Would you like to involve patients and carers in your research?**

Funding Opportunities

- Returning Carers' Scheme** Deadline tomorrow, Tuesday 10 March
- Invitation to Apply for HEE/NIHR ICA Programme Doctoral and Post-Doctoral Awards** Funding opportunities for non-medical healthcare professionals
- Career Enhancement Scholarships** The Postgraduate Programme in Evidence-Based Health Care are offering career enhancement scholarships for courses on evidence based health care and study design

Fellowship Opportunities

- Kellogg College Junior Research Fellowship** Tenable for up to three years from Thursday 1 October 2015

Engagement Opportunities

- 3 Minutes, 1 Slide....Your Thesis!** Enter the 3 Minute Thesis (3MT) competition and put your communication skills to the test
- Applications open for the Josh Award 2015** Are you a science communication star? The Josh Award aims to recognise and support up-and-coming talent in science communication
- BSA Media Fellowships 2015** Spend up to six weeks working at a media outlet, such as the Guardian, the Times, or the BBC

Volunteer Opportunities

- Volunteer with the League of Friends at the JR Hospital** New volunteers wanted to help run the new League of Friends Cafeteria at the John Radcliffe Hospital
- Male volunteers sought for Type 2 diabetes study**
- Volunteers needed: Type 1 diabetes study**
- Help researchers find out what strategies people use to lose weight**
- Healthy volunteers needed for drug study**
- Men needed for a brain study!**
- Clinical Vaccine Trials** The Jenner Institute are developing vaccines against major global diseases and want healthy volunteers aged 18 to 55 to take part in trials of them

Student Opportunities

- Undergrad students: Take part in a study on students' views and experiences**
- Medical students: Take part in survey on social media in medical school education**
- Medical Undergraduate Conference** Royal College of Physicians and Surgeons of Glasgow. Saturday 28 March

Other Items of Interest

MRC launches good research practice e-learning module The Medical Research Council (MRC)'s new e-learning package on good research practice has been launched and is available to all researchers

Fancy a quick workout in your lunch break? Sign up for Zumba Light classes, Tuesdays at JR Hospital

Would you like to edit medical papers for OUP?

The PRoF award 2015 – call for candidates Ghent University is looking for innovative projects in the broad domain of healthcare applications to enter an award competition organised by the PRoF chair, Prof. dr. R. Peleman

Green Templeton College Medical Day Saturday 14 March

Digital Health Hack Weekend 21 – 22 March The DHOx Health Hack Weekend aims to bring together people of different skill sets and expertise to work together on new digital health projects

Register Now for the 6th Oxford Neuroscience Symposium Wednesday 25 March, Mathematical Institute, Andrew Wiles Building

Academic Medical Forum Day Conference An opportunity to find out about current clinical research in Oxford, Tuesday 14 April 2015

Childhood Cancer Research Group (CCRG) Scientific Meeting Thursday 16 April, St Anne's College

Oxford Parkinson's Disease Centre Research Day Monday 20 April, 9am–7pm

The CRUK Oxford Centre Annual Symposium is now open for registration Mathematical Institute, Friday 5 June

44th Annual Conference of the Society for Academic Primary Care Wed 8 – Fri 10 July

ContentMine Workshop at the Wellcome Trust 13–14 April 2015. Darwin Room, Wellcome Trust, 215 Euston Road, London NW1 2BE

Bioactive Lipids in Cancer, Inflammation and Related Diseases 14th International Conference, 12 – 15 July 2015, Budapest

AND FINALLY...3 MINUTES, 1 SLIDE....YOUR THESIS!



An 80,000 word thesis would take 9 hours to present; would you be able to explain yours in just 3 minutes? The 3MT challenges doctoral candidates to present a compelling spoken presentation on their research topic and its significance in just three minutes. Think you can do it? Then read on for more information about the competition <http://www.ox.ac.uk/students/three-minute-thesis-competition> (**deadline Friday 17 April**).

Tweet from your event!

Are you involved in, organising or attending a public or patient engagement activity this Spring?

If so, please **tell us all about it on Twitter using the hashtag #OxMedSciEngages**. Tweets will be highlighted on our [website](#), alongside the [full programme of innovative, interesting and exciting events](#) that our researchers are taking part in, and are a great way to involve and engage different audiences, particularly those people who might not be able to attend events.

Additionally, if your event isn't listed, please email communications@medsci.ox.ac.uk and let us know.



Sixty Seconds with...

Jayne Todd, Head of Alumni Relations, Oxford Medical Alumni

This month, we speak to Jayne Todd, Head of Alumni Relations, Oxford Medical Alumni. Jayne spends her days engaging with our 17,500 medical alumni spread across the globe. In her spare time, she likes to nose around other people's houses, inspecting door knobs and hinges – all in aid of 'learning architectural vernacular' of course!



What is Alumni Relations in Oxford?

Alumni relations, or 'engagement', is about maintaining a positive relationship with our alumni so that the messages they share about Oxford will also be positive – and current. We keep them informed about our achievements and make them part of Oxford's future, not just its past. Alumni are a direct source of support, advice and networking, and they provide:

- Invaluable word-of-mouth marketing amongst their personal social and professional networks. This encourages the very best to continue to apply to study and work here.
- Skills and experience from their own lives and careers, which in turn benefit current staff and students in Oxford. Additionally, Alumni are often in the position to engage with the expertise offered in Oxford in their professional lives.
- Role models for current students, and often practical support for students as they start their own careers.

Tell us a little about your role



Myself and Ellysia Graymore make up the Oxford Medical Alumni team and between us we offer an alumni engagement 'programme' to 17,500 medical alumni across the division. We are the 3rd largest alumni body in the collegiate University (average size is 5,000 alumni) and we have been doing this since 2002 when Oxford Medical Alumni started with just 65 alumni on our records!

We begin the process by trying to develop engaged, committed students. Remember – they are students for one to six years and alumni for the rest of their lives. This relationship continues throughout the student/alumni lifecycle culminating in the graduation reception when we celebrate with the students, their families and friends the 'joys, toil and tears' which have brought them to this point. It is a moving occasion and one which also enables us to engage with proud

parents and friends.

We also run a regular programme of reunions for graduating years, and as time moves on, we encourage partners and children to come along too. The reunions always record the achievements, personal and career of alumni in a yearbook which charts the life and progress of an alumnus.

We also send newsletters, offer social media platforms on Facebook and LinkedIn, and organise special alumni lectures. We support our alumni in their professional and personal lives through the facilitation of social and professional networks, preferential access to on-campus expertise and facilities, and negotiated benefits with third-party suppliers, so that they are more likely to be our loyal life-long supporters.



Good alumni relations benefits alumni as well as the institution. We know that alumni enjoy 'coming back' – meeting friends and peers whom they may not have seen for over 40 years. And we know that this has on several occasions resulted in significant gifts to the Medical Sciences Division. We also know that alumni use us to enable potential students to find out what 'life is like now for an Oxford student', that our alumni are keen to dispel the many myths and tales which surround the wider University. Alumni are always keen to hear about Oxford, their tutors and their peers and are more than willing to give back – offering their time, expertise and contacts generously.

What's currently at the top of your to do list?



We've been given a rare opportunity to be included in the next Oxford Today – which will be landing on your doormats in April, so have been busy preparing the supplement. I'm also managing the reunions programme and planning for this year's named lectures: the Weatherall, Osler and Radcliffe Lectures.

How did you get to where you are today?

I started out as a Chartered librarian and then moved to information software marketing at UAEA Harwell. I also worked in marketing roles in sound and TV graphics software companies. In 1985, I was lucky enough to be back stage at Live Aid and attended the Cannes film festival marketing TV graphics systems. Then I decided to have six children. The skills I acquired being a mum (diplomacy, dictatorship, handling multiple tasks simultaneously) and the dogged determination I acquired navigating the minefield of disabled children's educational provision, made me

realise I should go back to work. I started in a college doing development work...until this role came along in 2002.

What inspires you?

I am studying for a post graduate certificate in vernacular architecture and have acquired a worrying interest in door hinges, window latches and other people's attics and basements. Anyone wanting to find out more about the history of their house ...let me know.

Oxford Medical Alumni, contact us to keep in touch and find out:

- What is happening at the University and in the Division
- Oxford's plans for the future
- What other alumni are doing
- Hear what current students are up to
- Learn more about the history or trivia of the Medical School – and how it may have laid the foundation for Oxford's current culture and success!
- And how you can become involved with the alumni organisation.



Images:

Taken at various alumni events. Courtesy of Oxford Medical Alumni.

Bottom: Salisbury Cathedral: Jayne took this "whilst hanging off the chimney examining an inscription on the side of the house. Roof line reflects the original shape of the ridge joist supporting the roof – distorted by the seasoning of the wood over the years."

Lab Talk

As [Endometriosis Awareness Week](#) (3–9 March) comes to an end, we speak to Professors Christian Becker and Krina Zondervan, co-Directors of the Endometriosis Care and Research (CaRe) Centre. The Centre, a collaboration between the Oxford University Hospitals NHS Trust and the Nuffield Department of Obstetrics and Gynaecology (NDOG), integrates the highest standard of clinical care with cutting-edge, collaborative research into endometriosis, with the aims to improve our understanding of underlying causes, to find novel diagnostic approaches and to identify innovative, more focused therapies for this heterogeneous condition.

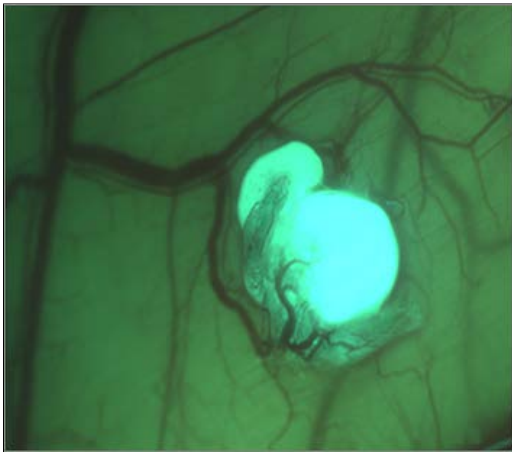


Tell us a little about your research area

We work on [endometriosis](#), a very common condition affecting up to 10% of women during their reproductive life span, in which cells that normally line the uterus (endometrium) are found outside the uterus, mostly in the pelvis. Endometriosis can cause severe pelvic pain and reduced fertility, and has considerable impact on the lives of sufferers and their families.

Endometriosis is a health problem of considerable unmet clinical need, because

- 1) the only method for reliable diagnosis is surgery,
- 2) treatment options are limited to repeated surgeries or hormonal medication with many side-effects, and
- 3) underlying causes remain largely unknown.



One central issue is the lack of reliable biomarkers for endometriosis. Results from Christian's systematic reviews strongly suggest the need for large-scale, multi-centre studies. As a result, together with colleagues from Harvard and the World Endometriosis Research Foundation, we recently initiated a worldwide collaboration, the [WERF EPHect project](#), aimed at the global harmonisation and standardisation of phenotypic data and biological sample collection in endometriosis research, involving 30+ research centres and 3 industrial partners worldwide. The resulting protocols are now the standard and form the basis for endometriosis research internationally.

In addition, Krina whose research group is based both at NDOG and the [Wellcome Trust Centre for Human Genetics](#) is Principal Investigator of a number of large-scale, collaborative studies and initiatives, including the International Endogene Consortium (IEC), which has discovered 7 out of the 9 known genetic variants associated with endometriosis to date. These studies have cemented the role of genetics in the development and establishment of the disease, and are shedding new light on causal

biological pathways and potential subtypes of disease – important information for drug target discovery.

Importantly, we are really fortunate to have a diverse group of staff with such varied expertise working with us. The centre comprises 8 researchers, 7 clinicians and 2 research nurses. The research groups are highly interdisciplinary, ranging from molecular biologists to computational biologists and epidemiologists. Additionally, we have very close ties with many research groups, sometimes sharing postdoctoral research fellows and research technicians. The clinical team consists of gynaecologists who are often fertility and/or surgical experts or pain specialists and is supported by specialist nurses, colorectal and urological surgeons.

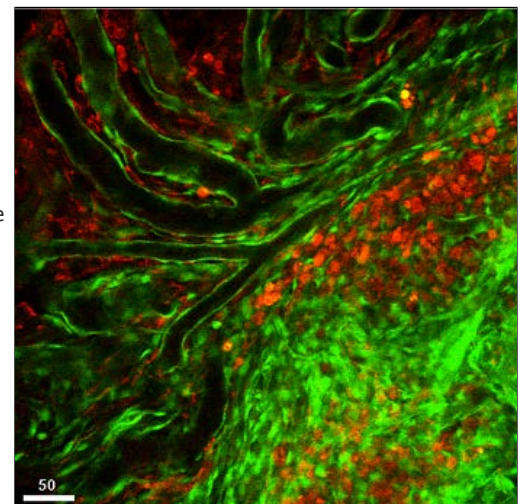
What's next for CaRe? How do you see your research developing?

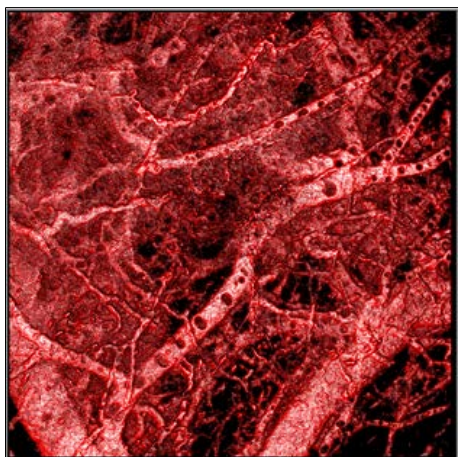
As already outlined above, there is a great need for novel, less invasive drug treatments for endometriosis as well as opportunities to diagnose the condition earlier, without the need for surgery. A key question is whether the disease is one, or represents several subtypes with distinct pathogeneses. Our genetic work has already made progress towards answering this, showing that so-called 'stage I/II disease', characterised mainly by peritoneal lesions, is aetiologically distinct from 'stage III/IV disease', in which ovarian or deep infiltrating disease features. The likely considerable heterogeneity of the disease is a real challenge. Current studies only take into account the extent of disease. We expect, however, that the Oxford-led WERF EPHect project will lead to further large global collaborations using standardised data which will allow us to possibly identify subtypes of the condition which may then lead to the development of better diagnostic tools and more individualised therapies.

It sounds like you really benefit from such diversity and collaboration. How does this work in practice?

Each of the groups at the Centre has a different focus, which are highly complimentary.

For example, Krina's work is computational, using genetic and genomic data generated on DNA and tissue samples from





100s – 1000s of women participating in our studies to better understand the aetiology of the disease and its subtypes, information that is required for both novel drug target discovery and biomarker identification. Christian's group focuses on the identification of biomarkers of the disease, and on the role of angiogenesis in the disease process. And Katy Vincent's group focuses on understanding the highly complex role of pain in endometriosis, through studies that include functional MRI.

By definition, the Centre's work is highly collaborative, both within Oxford, nationally, and globally. We have strong links with endometriosis research groups at e.g. Harvard University, the QIMR Berghofer Institute for Medical Research in Brisbane, Baylor College of Medicine, the University of Edinburgh, and other collaborators in the global WERF EPHect network. We have also a strong record of collaborative links with pharmaceutical and diagnostic companies. For instance, [Oxford University signed a collaborative agreement with Bayer HealthCare](#) on a programme of work to discover new drug targets for endometriosis and

uterine fibroids.

Our Centre plays a key role in providing expertise as well as clinical data and samples for the work, in which we collaborate closely with the Target Discovery Institute, the Botnar Research centre, and the Centre for Functional Magnetic Resonance Imaging of the Brain (FMRIB), and which in addition is also opening up new opportunities for collaboration with PIs across Oxford.

On a more personal note, can you tell us how you got to where you are today?

Christian: After Medical School at the Freie Universität Berlin I completed my training in Obstetrics and Gynaecology at the Charité. This was followed by two postdoctoral fellowships with Judah Folkman, a pioneer in angiogenesis and antiangiogenic therapy, at Harvard Medical School in Boston. When I arrived in Oxford in 2005 I became a Subspecialist Trainee in Reproductive Medicine and Surgery and in parallel a Clinical Lecturer, which enabled me to extend my research to identifying biomarkers for endometriosis. Since 2009, I am an Honorary Consultant Gynaecologist at the John Radcliffe Hospital and recently became Associate Professor. Together with Krina Zondervan I lead the above described comprehensive basic, translational and clinical research program on endometriosis at the University of Oxford. I am also the Surgical Lead of WERF EPHect, and Clinical Lead of the Oxford BSGE Endometriosis Specialist Centre – the second largest in the UK. I have been a member of the Guideline Development Group for the current ESHRE Endometriosis Guidelines, which were adopted by many national gynaecological societies such as the Royal College.

Krina: I am originally from the Netherlands, where I studied Biomedical Sciences at the University of Leiden (1995). I first came to Oxford on an Erasmus exchange scholarship, and continued to do a DPhil in Epidemiology (Dept of Public Health/NDOG, St Edmund Hall, 1999). I was awarded an MRC training fellowship in Genetic Epidemiology in 2000, based at the Wellcome Trust Centre for Human Genetics, which included an MSc in Genetic Epidemiology (Erasmus University, Rotterdam, Netherlands, 2001) and research periods at the Queensland Institute for Medical Research, Brisbane, Australia; the Dept of Human Genetics, University of Pittsburgh, USA; and the Dept of Obstetrics & Gynaecology, University of Reykjavik, Iceland. I subsequently was awarded a Wellcome Trust Career Development Fellowship and started my own research group focused on understanding the pathogenesis of endometriosis through genetic and traditional epidemiological methods. In 2007, I was awarded a grant by the Wellcome Trust to conduct the first collaborative genome-wide association study in endometriosis. In 2012, I became co-Director of the Endometriosis CaRe centre in Oxford, and was appointed as Senior Fellow in Reproductive and Genomic Epidemiology at NDOG in 2014. In addition, as Christian, I am a parent (mother of twin girls, born in 2011), and we are both strong believers in the potential for combining a successful, fulfilling scientific career with family life.

Images:

Top: Professors Krina Zondervan and Christian Becker

Middle left: Experimental endometriotic lesion (GFP) in a murine transplant model

Middle right: Immunofluorescent microscopy of endometriosis lesion

Bottom left: Blood vessel tree from experimental endometriotic lesion

Links:

[Nuffield Department of Obstetrics and Gynaecology](#)

[Oxford University Hospitals NHS Trust](#)

[Christian Becker's webpage](#)

[Krina Zondervan's webpage](#)

[Katy Vincent's webpage](#)

[Endometriosis Care and Research \(CaRe\) Centre](#) (This website is currently in development. Please check back in a couple of months)

[WERF EPHect project](#)

[Endometriosis UK](#)

Would you like your lab/centre/unit to feature in a future issue of Lab Talk? For further information, please contact communications@medsci.ox.ac.uk.

Athena SWAN News

Contents

1. [British Federation of Women Graduates Scholarship Competition](#)
2. [2015 L'Oréal–UNESCO For Women in Science UK & Ireland Fellowships](#)
3. [Talks and Events](#)
 1. [Dorothy Hodgkin Memorial Lecture: A New Era in Structural Biology](#)
 2. [LGBTQ role–models in science](#)
4. [Articles and Resources](#)
 1. [Women working in medical research](#)
 2. [Equality and diversity prioritised in HEFCE grant letter](#)
 3. [Gender Balance of Royal Society URFs](#)
 4. [50 Years of Progress for Women in Science](#)
 5. [Addressing Unconscious Bias](#)
 6. [Don't Be Fooled By the Closing Gender Gap in Science PhDs](#)
 7. [Straight talk for white men](#)

British Federation of Women Graduates Scholarship Competition

BFWG awards scholarships annually to women studying for doctorates at British universities. The awards are given on the basis of overall academic excellence determined from information given on application forms, in referee reports and, for shortlisted candidates, at interview. Awards are given out in September/October and usually range between £2,500 and £6,000. Only women doctoral students (PhD, DPhil or equivalent) at



British universities who began full time doctoral studies between September 1st 2012 and October 31st 2013 (or the part time equivalent) are eligible to apply.

The closing date for applications is Friday, 27th March 2015. For further information see:

www.bfwg.org.uk and look under *Scholarships*.

[Top](#)

2015 L'Oréal–UNESCO For Women in Science UK & Ireland Fellowships

L'Oréal UK & Ireland, the UK National Commission for UNESCO and the Irish National

Commission for UNESCO, with the support of the Royal Society have partnered together to provide a dedicated UK & Ireland For Women in Science Fellowship programme for women scientists at post-doctoral level to enable and/or facilitate promising scientific research in the life and physical sciences.

This year five Fellowships will be awarded to outstanding female postdoctoral scientists to assist them with their research. The Fellowships, each worth £15,000 (equivalent Euros for candidates in Ireland), are tenable at any UK or Irish university or research institute to support a 12-month period of research and for the first year we will be including maths, engineering and computer science.

The Fellowship money can be spent in any number of innovative ways to enable women scientists to pursue their careers and facilitate world class research – such as buying equipment, paying for childcare or funding travel costs to an overseas conference.

Applications close on 13 March. For further information see: www.womeninscience.co.uk/

[Top](#)

Talks and Events

Dorothy Hodgkin Memorial Lecture: A New Era in Structural Biology

This year's Dorothy Hodgkin Memorial Lecture will be given by Dr Petra Fromme, from the Department of Chemistry and Biochemistry, Arizona State University, on 'The Dawn of a New Era in Structural Biology'. To be followed by a reception.

Date: Thursday 12 March

Time: 5.00pm

Venue: University Museum Lecture Theatre, Parks Road

LGBTQ role–models in science

How relevant are LGBTQ issues in science? Does it matter that there are very few visible LGBTQ role models in scientific fields? Are Oxford

science departments LGBTQ friendly, can things be improved? Do you wish to pursue a DPhil/career in science but are worried by issues like these? Do you have any thoughts or ideas share on these issues?

Come to Lady Margaret Hall on Wednesday of 8th week (11th of March) at 8pm for an informal presentation and open discussion on these issues. If you have any questions, or would like to contribute a short presentation on any experiences you have had in this area, please email edward.barnes@chem.ox.ac.uk. Refreshments will be available, and absolutely all are welcome!

Date: Wednesday 11 March

Time: 8:00 – 9:00 pm

Venue: Lady Margaret Hall – Talbot Hall

[Top](#)

Articles and Resources

Women working in medical research

What's it like to be a woman in a medical research environment? Some Fellows of the Academy of Medical Sciences, including [Prof Barbara Casadei](#), share experiences from their own careers.

<https://www.youtube.com/watch?v=fNIVyzUScVM>

Share your views at #MedSciLife

Equality and diversity prioritised in HEFCE grant letter

The secretary of state for business, innovation and skills (BIS) and the minister for universities and science have called for greater diversity at all levels in universities.

The annual grant letter from BIS to the Higher Education Funding Council for England (HEFCE) sets out funding for higher education and the government's priorities for the coming year. It highlights the lack of diversity in senior leadership and calls for the sector to go 'much further' to seek out and harness diverse talent.

The letter expresses support for work undertaken by HEFCE and other sector bodies which would include ECU to ensure greater diversity in university leadership and governance.

For more information see: <http://www.hefce.ac.uk/news/newsarchive/2015/name,100591,en.html>

Gender Balance of Royal Society URFs

In September last year the Royal Society [announced](#) the prestigious career development University Research Fellowships (URFs). These were awarded to 43 young scientists but there was widespread disappointment that only two of them were women. The Royal Society has now published a [report](#) outlining steps it will take to encourage a more equal gender balance in future.

RS President, Sir Paul Nurse, has written about the report in a recent [blog](#).

50 Years of Progress for Women in Science

Nancy Hopkins (Professor of Biology at the Massachusetts Institute of Technology) reflects on Fifty Years of Progress for Women in Science Recognizing and the actions taken at MIT to combat unconscious gender bias

(<http://online.liebertpub.com/doi/abs/10.1089/dna.2015.2803>).

Addressing Unconscious Bias

In this article and accompanying video, actress Geena Davis, founder and chair of the Geena Davis Institute on Gender in Media, explains why she thinks lopsided male representation in media skews our perceptions and how corporations can drive change.

http://www.mckinsey.com/Insights/Organization/Addressing_unconscious_bias

Don't Be Fooled By the Closing Gender Gap in Science PhDs

Article by Curt Rice on recent research that suggests that the closing gender gap is due to fewer men, and not more women, choosing to study science at PhD level.

<http://www.theguardian.com/higher-education-network/2015/feb/19/dont-be-fooled-by-t>

[he-closing-gender-gap-in-science-phds](#)

Straight talk for white men

An article summarising the impact of unconscious bias.

<http://www.nytimes.com/2015/02/22/opinion/sunday/nicholas-kristof-straight-talk-for-white-men.html>

[Top](#)

Library News

Contents

1. [Open Access: What you need to know](#)
 1. [Open Access policy for the next REF: early warning for researchers](#)
 2. [Oxford's response and implementation plans](#)
 3. [Open Access help & information](#)
2. [Easter Holidays 2015 Opening Hours](#)
3. [2020 Vision: Making your research output compliant \(FOSTER\)](#)
4. [Oxford Gateway to Europe website launched](#)
5. [Bodleian iSkills](#)

Open Access: What you need to know

From April 2016, researchers must take additional action on **acceptance** of papers to be eligible for the next REF. Even researchers accustomed to meeting the open access requirements of funders e.g. the Wellcome Trust or the Research Councils, will have to **take special, additional action (at the time of the acceptance of the manuscript)** for every research output that they produce. Non-compliance will render outputs ineligible for the REF. **Non-compliance at the time of paper acceptance cannot be made to be compliant later.**



Open Access policy for the next REF: early warning for researchers

HEFCE policy for the next REF requires 'author accepted manuscripts' (final peer-reviewed version) to be deposited in an institutional or subject repository within three months of acceptance for publication and made open access within 12 months. This condition must be met from 1st April 2016 for all journal articles and conference proceedings with an ISSN.

Outputs will only be eligible for submission in the next REF if HEFCE's OA conditions are met. The policy applies whether the underlying research was externally funded or not.

Even researchers accustomed to meeting the OA requirements of e.g. the Wellcome Trust or the Research Councils will have to take special, additional action (at the time of the acceptance of the manuscript) to satisfy HEFCE's OA rules. This will require all potentially REF-eligible researchers to take individual and timely action for every research output that they produce. Non-compliance will render outputs ineligible for the REF. Non-compliance at the time of paper acceptance cannot be made to be compliant later.

Oxford's response and implementation plans

To ensure the University is able to meet HEFCE's OA requirements a pilot project is taking place during Hilary Term 2015. The resultant process will be developed, tested and communicated across the collegiate University well in advance of April 2016 to ensure compliance with HEFCE's requirements across all disciplines. It should result in a 'one stop shop' for all OA matters, but meeting the REF requirement takes priority.

The pilot includes two departments from the Medical Sciences Division: NDM (Experimental Medicine) and Biochemistry.

Open Access help & information

- Oxford's OA website: <http://openaccess.ox.ac.uk/>. See '**What do I need to do?**' tab for guidance on main funders, APCs and REF policy.
- ORA (Oxford University Research Archive): <http://ora.ox.ac.uk/information/contribute>.
- Sherpa JULIET: www.sherpa.ac.uk/juliet – use this site to check funder requirements.
 - Sherpa ROMEO: www.sherpa.ac.uk/romeo – journal self-archiving & embargo policies.
 - Sherpa FACT: www.sherpa.ac.uk/fact – guidance for RCUK and COAF authors.
 - Questions? Email the University OA helpline: open-access-enquiries@bodleian.ox.ac.uk.
 - Want a briefing or Q&A in your department? Use the email above to book a Librarian.

[Top](#)

Easter Holidays 2015 Opening Hours

Bodleian Health Care Libraries would like to wish all our users Happy Easter.

During the Easter period **Friday 3rd April to Monday 6th April**, the libraries are open as follows:

Cairns Library, John Radcliffe Hospital: NOT STAFFED (24 hour card access still available)

Knowledge Centre, Old Road Campus Research Building: CLOSED (24 hour card access available at Cairns Library)

[Top](#)

2020 Vision: Making your research output compliant (FOSTER)

21st April, Keble College

[#fosteropenscience](http://www.bodleian.ox.ac.uk/science/2020-vision)



This workshop is designed to update graduate students and research staff at Oxford on Open Access (OA) policies and expectations with special emphasis on the practical implications for researchers and how to meet REF 2020 requirements. The workshop is supported by a grant from the FOSTER project (www.fosteropenscience.eu/project/) and by Keble College.

The programme will include:

- Keynote presentations from representatives of HEFCE and HORIZON 2020.
- Updates on University OA implementation policy, projects and services created by libraries and academic services
- Presentations about institutional repositories – Oxford Research Archive (ORA) and ORA–data
- An insight into open access academic repositories – Zenodo, Europe PubMed Central and arXiv
- Q&A sessions will provide practical advice on how to make publications freely available

This event is free of charge (including lunch) but places are limited. Please book at <http://tinyurl.com/p6usd97>.

If you have any queries, please contact ljilja.ristic@bodleian.ox.ac.uk

[Top](#)

Oxford Gateway to Europe website launched

This Gateway gives guidance on European funding–related activities and support at Oxford. It is mainly aimed at internal researchers and staff, but also provides advice and support to potential external collaborators (universities, SMEs, industry and non–academic organisations). It also gives information on non–Horizon 2020 European activities at Oxford, and directs users to the relevant contacts and support.

The Gateway is at www.europegateway.ox.ac.uk/. There is a Twitter feed at https://twitter.com/eu_oxford.

[Top](#)

Bodleian iSkills



Bodleian Libraries will be running the following workshops during week 8.

Bodleian iSkills: Your thesis, copyright and ORA (Tues 10 Mar 12.00–13.00) (wk 8)

Oxford DPhil students are required to deposit a copy of their thesis in ORA (Oxford University Research Archive). This session will focus on copyright and other issues that DPhil students need to take into account when preparing their thesis for upload to ORA.

Who is this session for: Doctoral research students.

Presenters: David Watson, Jason Partridge and Sarah Barkla

Venue: Radcliffe Science Library Training Room > [Book online](#)

Bodleian iSkills: Research Impact – citation analysis tools (Thurs 12 March 14.00 – 15.30) (wk 8) – An introduction to citation tracking and bibliometrics for calculating research impact. During the workshop we will introduce a range of 'impact factor' tools to find top journals and conferences, count citations and measure the impact of publications and researchers. The workshops will cover the Journal Citation Reports, SCImago Journal Rank, Web of Science, Scopus, Google Scholar, Essential Science Indicators, ORCID, h–index and more.

Who is this session for? Researchers, Academics, Research Support Staff and Research Postgraduates, especially in Sciences and Social Sciences.

Presenters: Juliet Ralph, Karine Barker and Kelly Schultz

Venue: Training room, Radcliffe Science Library > [Book online](#)

Keeping up with Bodleian Libraries training opportunities: Why not follow us on Twitter at <https://twitter.com/bodleianskills> or visit the Bodleian iSkills blog at <http://blogs.bodleian.ox.ac.uk/skills/>

Questions? – Please contact usered@bodleian.ox.ac.uk

[Top](#)

Board Business

In this regular feature, Dr David Bryan, Divisional Secretary, provides a summary of the Medical Sciences Board's activity

At its meetings earlier this term, the Medical Sciences Board:

- (1) agreed to recommend that on certain understandings a proposed HEFCE Research Partnership Infrastructure Fund bid for a Vaccines and Immunology Building on the University's Old Road Campus be submitted;
- (2) welcomed Sir Gordon Duff, the Principal of St Hilda's, to his first meeting of the Board as a nominee of the Conference of Colleges;
- (3) congratulated Professor Rodney Phillips on his appointment as Dean of Medicine at the University of New South Wales, agreed that Professor Richard Cornall take over Professor Phillips' divisional duties in the Finance and Physical Capital arena with effect from 1 April 2015 and agreed also that Professors Cornall and Paterson be designated Deputy Heads of Division;
- (4) received a report on Athena SWAN developments, including an update on applications for Silver status and on use of the 'Returning Carer's Fund', to which the Biomedical Research Centre had made a contribution;
- (5) received a report from the Board's Research Committee including its discussion of the proposed Vaccines and Immunology Building and of the outcome of the Research Excellence Framework submissions;
- (6) considered a proposal that had been aired in Council's Personnel Committee to introduce the title of Professor of Practice, on which very mixed views were expressed by Board members.

The next Medical Sciences Board meeting will take place on Tuesday 17 March, 2015.

Further information about [the board and its committees](#).

Questions should be directed to [Dr David Bryan](#).

Opportunities and Updates

Important Updates

University becomes full corporate member of Understanding Animal Research Services and training opportunities available for staff and students

Workshop: A Guide to the NHS Information Governance Toolkit Monday 23 March 2015, 14:00 – 16:00

The ORDS – Oxford's Online Research Database Service A tool for researchers – to aid effective data management

Oxford Gateway to Europe New website launched to give guidance on European funding-related activities and support at Oxford

Call for new Oxford Research Staff Society Committee Members Do you want to get more involved in the Oxford Research Staff Society?

Would you like to involve patients and carers in your research?

Funding Opportunities

Returning Carers' Scheme Deadline tomorrow, Tuesday 10 March

Invitation to Apply for HEE/NIHR ICA Programme Doctoral and Post-Doctoral Awards Funding opportunities for non-medical healthcare professionals

Career Enhancement Scholarships The Postgraduate Programme in Evidence-Based Health Care are offering career enhancement scholarships for courses on evidence based health care and study design

Fellowship Opportunities

Kellogg College Junior Research Fellowship Tenable for up to three years from Thursday 1 October 2015

Engagement Opportunities

3 Minutes, 1 Slide.....Your Thesis! Enter the 3 Minute Thesis (3MT) competition and put your communication skills to the test

Applications open for the Josh Award 2015 Are you a science communication star? The Josh Award aims to recognise and support up-and-coming talent in science communication

BSA Media Fellowships 2015 Spend up to six weeks working at a media outlet, such as the Guardian, the Times, or the BBC

Volunteer Opportunities

Volunteer with the League of Friends at the JR Hospital New volunteers wanted to help run the new League of Friends Cafeteria at the John Radcliffe Hospital

Male volunteers sought for Type 2 diabetes study

Volunteers needed: Type 1 diabetes study

Help researchers find out what strategies people use to lose weight

Healthy volunteers needed for drug study

Men needed for a brain study!

Clinical Vaccine Trials The Jenner Institute are developing vaccines against major global diseases and want healthy volunteers aged 18 to 55 to take part in trials of them

Student Opportunities

Undergrad students: Take part in a study on students' views and experiences

Medical students: Take part in survey on social media in medical school education

Medical Undergraduate Conference Royal College of Physicians and Surgeons of Glasgow. Saturday 28 March

Attention medical students: RCPG launches videos and hosts events to promote general practice

Other Items of Interest

MRC launches good research practice e-learning module The Medical Research Council (MRC)'s new e-learning package on good research practice has been launched and is available to all researchers

Fancy a quick workout in your lunch break? Sign up for Zumba Light classes, Tuesdays at JR Hospital

Would you like to edit medical papers for OUP?

The PRoF award 2015 – call for candidates Ghent University is looking for innovative projects in the broad domain of healthcare applications to enter an award competition organised by the PRoF chair, Prof. dr. R. Peleman

Green Templeton College Medical Day Saturday 14 March

Digital Health Hack Weekend 21 – 22 March The DHOx Health Hack Weekend aims to bring together people of different skill sets and expertise to work together on new digital health projects

Register Now for the 6th Oxford Neuroscience Symposium Wednesday 25 March, Mathematical Institute, Andrew Wiles Building

Academic Medical Forum Day Conference An opportunity to find out about current clinical research in Oxford, Tuesday 14 April 2015

Childhood Cancer Research Group (CCRG) Scientific Meeting Thursday 16 April, St Anne's College

Oxford Parkinson's Disease Centre Research Day Monday 20 April, 9am–7pm

The CRUK Oxford Centre Annual Symposium is now open for registration Mathematical Institute, Friday 5 June

44th Annual Conference of the Society for Academic Primary Care Wed 8 – Fri 10 July

ContentMine Workshop at the Wellcome Trust 13–14 April 2015. Darwin Room, Wellcome Trust, 215 Euston Road, London NW1 2BE

Bioactive Lipids in Cancer, Inflammation and Related Diseases 14th International Conference, 12 – 15 July 2015, Budapest

And Finally...

3 Minutes, 1 Slide.....Your Thesis!



An 80,000 word thesis would take 9 hours to present; would you be able to explain yours in just 3 minutes? The 3MT challenges doctoral candidates to present a compelling spoken presentation on their research topic and its significance in just three minutes. Think you can do it? Then read on for more information about the competition <http://www.ox.ac.uk/students/three-minute-thesis-competition> (**deadline Friday 17 April**).

Important Updates

University becomes full corporate member of Understanding Animal Research

Services and training opportunities available for staff and students

As of January 2015 the University of Oxford has become a full corporate member of Understanding Animal Research (UAR). As such their services and training are open to any member of the University.

Below is a little more information on UAR but you are encouraged to read more about them on their website.

You will find below details of some training events they are delivering through April and May.

If you would like to attend any of the events (free of charge) please contact the [Head of the Home Office Administration Unit](#) for a ticket. Please note the University is limited to 4 attendees/event.

<http://www.understandinganimalresearch.org.uk/about-us/communication-training-courses/>



Who they are:

- Understanding Animal Research aims to achieve broad understanding of the humane use of animals in medical, veterinary, scientific and environmental research in the UK. We are a not for profit organisation funded by our members.

What they do:

- Understanding Animal Research provides information and educational materials based on thorough research and understanding of the facts, historical and scientific.
- Understanding Animal Research seeks to engage with and inform many sectors to bring about its vision. Key stakeholders include members of the public, the media, policy makers, schools and the scientific research community.

If you have any further questions on UAR or why the University has taken corporate membership please feel free to contact the [Head of the Home Office Administration Unit](#).

Workshop: A Guide to the NHS Information Governance Toolkit

Monday 23 March 2015, 14:00 – 16:00

Sarah Lawson will lead a workshop on the NHS Information Governance (IG) Toolkit.

The workshop is aimed at researchers working with patient and personal information, including amongst others, those who use data from the Health and Social Care Information Centre (HSCIC).

Increasingly researchers are asked to complete the [NHS IG Toolkit](#) to enable them to proceed with their research. Anyone wanting data from HSCIC or requiring the NIGB section 251 Confidentiality Advisory Group approval will need to complete the IG Toolkit to be able to proceed. This workshop will explain the IG Toolkit and give top tips and information on how to complete it successfully. Full information from registration to submission will be available as well as exemplar materials.

Bio: Sarah Lawson works in NPEU and is currently the Medical Sciences Division Information Governance Officer and is an active member of the JISC NHS-HE Forum Information Governance Toolkit Working Group. This group works alongside HSCIC to help HE researchers understand and complete the IGT as well as helping to shape the future IGT. Sarah has helped deliver two national training days for HE researchers on the IG Toolkit recently and has lots of tips and information that should make the task easier to complete.

Venue: The workshop will be held in the Seminar Room in the NDM Research Building, in Old Road Campus, Headington. A campus map can be found here: http://www.ndm.ox.ac.uk/_asset/file/old-road-campus-map.pdf. The NDM Research Building is no. 6. Please note there is ongoing construction work being carried out on buildings 2,3, and 5. Please take extra care on campus and follow the pedestrian signs. Finally, there is no car parking facilities in the area.

If you have not already registered your intention of attending, could you please drop a quick message to sylvain.phaneuf@imsu.ox.ac.uk to this effect so that we can prepare the room and tea/coffee accordingly?

The ORDS – Oxford's Online Research Database Service

A tool for researchers – to aid effective data management

The ORDS is a free, centrally supported service for University of Oxford researchers and their collaborators. It is designed to make it easy to create, edit, search, and share research databases online.

The ORDS is a web-based, cloud-hosted service. This brings a number of benefits to users:

- **Access from anywhere** – Users can work on their data from any computer with an Internet connection
- **Share securely** – It's easy to work collaboratively with colleagues in Oxford and beyond
- **Peace of mind** – Databases are automatically backed up
- **Public engagement** – If users choose to, they can make subsets of their data publicly available on the web

Existing databases or data collections can be uploaded into the ORDS. Alternatively, the ORDS database schema designer can be used to create a database from scratch. The ORDS was developed in-house at IT Services, and has been designed specifically with researchers in mind.

Funding bodies are starting to take an increasing interest in what happens to research data after the end of a project – for example, many of them now require that data is preserved and, where possible, made available for other researchers to use. The ORDS aims to make meeting these requirements as straightforward as possible.

For an overview of what the ORDS does and how to use it, you can watch the [demo video](#).

To learn more about the ORDS – or to try it out for yourself – please visit the ORDS website: <http://ords.ox.ac.uk/>. You can also read a blog post giving [Ten reasons to use the ORDS](#).

If you have any questions, you can contact the ORDS team by emailing ords@it.ox.ac.uk

Oxford Gateway to Europe

New website launched to give guidance on European funding-related activities and support at Oxford

The [Oxford Gateway to Europe](#) is a new information portal that gives guidance on European funding-related activities and support at Oxford. It is mainly aimed at internal researchers and staff, but also provides advice and support to potential external collaborators (universities, SMEs, industry and non-academic organisations).

With the start of the EU's Research and Innovation Programme 'Horizon 2020', our academic divisions are focused on increasing Oxford's market share in this €80bn funding programme. There are many new and different elements in Horizon 2020, so easy access to tailored call information, news, events and our own Oxford factsheets, as well as information on partnership opportunities, is vital to achieve this aim.

The Gateway also provides information on non-Horizon 2020 European activities at Oxford, and quickly signposts users to the relevant contacts and support.

Contributions to the Gateway have come from a number of University departments, including Research Services, the Equality and Diversity Unit, Erasmus Office, International Strategy Office, the Bodleian and Isis Ltd.

The previous European Commission information pages on the Research Services website have now been removed and redirected, and all content has been updated and integrated into the Gateway.

More information and factsheets will be added to the Gateway frequently, so please do visit the site regularly. If you have any questions or feedback about the website, please contact [Claudia Kozeny-Pelling](mailto:Claudia.Kozeny-Pelling@ox.ac.uk).

Call for new Oxford Research Staff Society Committee Members

Do you want to get more involved in the Oxford Research Staff Society?

New Divisional Contacts sought for the OxRSS Committee

We would like to appoint new Divisional Contacts for each Division: Humanities, Medical Sciences, Social Sciences and Mathematical, Physical and Life Sciences (MPLS). The Divisional Contact role is about creating and maintaining a link between OxRSS and researchers within different departments. You'll be working with the existing Divisional Contacts and Chair of the Committee in order to:

- Communicate with research staff on issues that matter to them
- Create links between departments and divisions and raise awareness of OxRSS
- Assist OxRSS in representing research staff issues to the University in order to inform policy and practice

Contact Steven Chance for further information about the divisional contact role: steven.chance@ndcn.ox.ac.uk

Would you like to involve patients and carers in your research?

Working with patients and other members of the public to design and plan your work helps to ensure that it addresses what matters to them and is carried out in ways that make them want to take part. All Thames Valley researchers can now post involvement opportunities on a new website, <http://patientsactiveinresearch.org.uk/>. The site also allows you to promote research participation opportunities.



Funding Opportunities

Returning Carers' Scheme

Deadline tomorrow, Tuesday 10 March

The scheme awards small grants to support the return to research of women and men who have taken a break of at least six months for caring responsibilities.

For further information, including details of how to apply, see: <http://www.medsci.ox.ac.uk/research/internal-research-funding/returning-carers-fund>

Invitation to Apply for HEE/NIHR ICA Programme Doctoral and Post-Doctoral Awards

Funding opportunities for non-medical healthcare professionals

The Integrated Clinical Academic (ICA) Programme provides personal research training awards for healthcare professionals (excluding doctors and dentists) who wish to develop careers that combine clinical research and research leadership with continued clinical practice and clinical development.

Health Education England (HEE) and The National Institute for Health Research (NIHR) are pleased to announce the launch of the first ICA Programme competitions for doctoral and post-doctoral awards.

Clinical Doctoral Research Fellowships

Enables graduate clinicians with some research experience and aspirations for a clinical academic career to obtain a PhD whilst broadening their professional horizons and developing their clinical skills.

Clinical Lectureships

Enables early post-doctoral clinicians to combine independent research in an academic position with continued clinical practice and professional development.

Senior Clinical Lectureships

Enables practicing clinicians with independent clinical research experience to undertake further research in a senior academic position whilst developing as a clinical academic leader.

Eligible individuals are welcome to apply to any one of the above schemes, irrespective of previous award history. For full eligibility, further details and instructions for applicants please visit www.nihr.ac.uk/hee-ica

Applications must be received by the NIHR TCC by 1.00 pm on 28th May 2015

Career Enhancement Scholarships

The Postgraduate Programme in Evidence-Based Health Care are offering career enhancement scholarships for courses on evidence based health care and study design

Applications are now open for career enhancement scholarships to cover the tuition costs of the following courses:

- [Practice of Evidence-Based Health Care](#) 18-22 May 2015. Deadline for scholarship applications **Friday 20 March 2015**.
- [Introduction to Study Design & Research Methods](#) 1-5 June 2015. Deadline for scholarship applications **Thursday 2 April 2015**.

These are part of the 2014-15 Postgraduate programme in Evidence-Based Health Care. A scholarship application form and course details can be found by following the relevant links above.

Fellowship Opportunities

Kellogg College Junior Research Fellowship

Tenable for up to three years from Thursday 1 October 2015

The main duty of the Junior Research Fellow is to undertake research, but it is hoped that the JRF will also contribute to the general intellectual life of the College. Although no stipend is payable, the JRF will be entitled to free lunches throughout the year when the kitchens are open, three free Guest Night Dinners per term, and the use of a shared Fellows' office. Those who have recently obtained, or are expected soon to obtain, a doctorate and who are working in any of the fields of research of the College's Fellows (see <http://www.kellogg.ox.ac.uk/college-fellows>) and/or Kellogg Research Centres (see <http://www.kellogg.ox.ac.uk/research/centres>), are eligible to apply, provided that they have been appointed to a stipendiary post within the University. The Junior Research Fellowship will be coterminous with the stipendiary post, but will in no case be tenable for longer than three years.

Applicants should write to the Senior Tutor, Kellogg College, by noon on Tuesday 31st March 2015, providing a CV, together with a covering letter detailing the stipendiary appointment held, the nature of the research being undertaken, and how they see themselves contributing to the intellectual life of the College. Two referees should be asked to write by the same date to the Senior Tutor in support of the application. Interviews of short-listed candidates will take place on Monday 27th April 2015.

Please either email applications and references to the Senior Tutor at vacancies@kellogg.ox.ac.uk with "JRF application" in the email subject, or send by post to the Senior Tutor, Kellogg College, 60-62 Banbury Road, Oxford OX2 6PN, UK.

Engagement Opportunities

3 Minutes, 1 Slide.....Your Thesis!

Enter the 3 Minute Thesis (3MT) competition and put your communication skills to the test



The 3MT challenges doctoral candidates to present a compelling spoken presentation on their research topic and its significance in just three minutes. The exercise cultivates your academic, presentation, and research communication skills. The competition will support your capacity to effectively explain your research in three minutes, in a language appropriate to a non-specialist audience.

Details and how to apply can be found [here](#). Deadline for applications **17 April 2015**.

DPhils who qualify will be given training before competing in Divisional heats, those that make it through the Divisional heats will present at a **University grand final**. This will then be followed by an online semi-final and a **National final** in Manchester.

Timetable

- W/C 13 May: **Training for DPhils taking part in Divisional heats**
- W/C 1 June: **Divisional heats**
- 23 June 5pm–7pm: **University grand final**
- Week of 13th June: **Online semi-final (this will be by video and finalists will not need to be present)**
- 8 September: **National final (Manchester)**

Prizes

Prizes will be awarded to all 8 of the University competition finalists.

- 1st prize – £150 plus travel and accommodation to the national final in Manchester on 8 September
- 2nd prize – £100
- Runner up prizes – £50

Applications open for the Josh Award 2015

Are you a science communication star? The Josh Award aims to recognise and support up-and-coming talent in science communication

Aim of the Award

To recognise up-and-coming talent in science communication through an award scheme, nurture development in the field and support the involvement in the Manchester Science Festival.

Objectives

- To recognise one outstanding contributor to science communication each year by means of a defining moment in their career.
- To assist them in the development of an innovative project or event for Manchester Science Festival as Science Communicator in Residence.
- To support their development through networking and skills training.



Who is the award for?

Science communication practitioners who can be full-time, part-time, or practising science communication through various aspects of their jobs, e.g. as a researcher at a University. We welcome applications from individuals and groups. The Award is open to anyone involved in science communication in the UK (and is a UK resident).

The winner will receive the following:

- Role as Manchester Science Festival Science Communicator in Residence for one year. This means you receive the support of the Manchester Science Festival team, members of BIG and previous Josh Award winners to develop and deliver an innovative and new project or event at Manchester Science Festival 2015.
- A free conference place at the BIG Event (in Norwich 22–24 July) to network with and present to a diverse range of science communicators from across the sector.
- Up to £1000 to develop their project or event with Manchester Science Festival and up to £500 personal expenses budget (this budget will be agreed and held by the Manchester Science Festival).
- Membership of BIG for one year.
- A personal prize cheque of £500 provided by the Josh Award Fund.

- The Josh Award trophy, held for one year.

For more information and to apply [click here](#). Deadline for applications **5pm Friday 17 April**.

About Josh

The Award is inspired by and named in memory of Josh Phillips who was the first Science Communication Officer at the Museum of Science and Industry. Josh was a much loved, much respected and highly talented science communicator whose outstanding career is commemorated with this award. Josh was also Chair of the British Interactive Group.

About Big

The British Interactive Group is the skills-sharing network for people involved in the communication of science, technology, engineering and maths.

BIG runs regular events and training courses on issues relevant to science communication and informal science and maths education.

Their annual conference – The BIG Event – is regarded as one of the best science communication conferences in the UK as a source of best practice, skills-sharing and networking. Members of the BIG community get access to news, discussion forums, training and events offering networking and sharing of information and views, as well as many other benefits such as free entry to UK science centres and museums. Find out more at www.big.uk.com.



BSA Media Fellowships 2015

Spend up to six weeks working at a media outlet, such as the Guardian, the Times, or the BBC

The Media Fellowship scheme provides a unique opportunity for **practising scientists, clinicians and engineers** to spend three to six weeks working at a media outlet, such as the Guardian, the Times, or the BBC.

Every year up to ten Media Fellows are mentored by professional journalists and learn how the media operates and reports on science, how to communicate with the media and to engage the wider public with science through the media.

After their media placement Fellows attend the **British Science Festival** in September, which provides an opportunity to gain valuable experience working alongside a range of media organisations from all over the UK in our dedicated Press Centre. The Festival also offers opportunities to learn from a wide range of public engagement activities and network with academics, journalists and science communicators.

Applications are open until 3 April 2015.

In order to apply, you must **complete the form on our website**, as well as provide a **letter of support** from your employer to say they are happy to release you to take part in the Fellowship.

The British Science Association believes that science should be a part of – rather than set apart from – society and culture, and is owned by the wider community. Our programmes encourage people of all ages and backgrounds to engage with science, become ambassadors for science, and ultimately to be empowered to challenge and influence British science – whether they work in science or not.



Volunteer Opportunities

Volunteer with the League of Friends at the JR Hospital

New volunteers wanted to help run the new League of Friends Cafeteria at the John Radcliffe Hospital

Volunteer work can be quite varied, from filling rolls, pouring tea or coffee, using the till to serving customers. Volunteers usually work 4 hour shifts, 8–12 and 12–4. Although any time contributed is much appreciated.

If you are interested in getting involved please contact David Simpson on 01865 220997, email leagueoffriends-jr@ouh.nhs.uk or visit The league of Friends on level 2 at the JR.

Male volunteers sought for Type 2 diabetes study

Researchers at the Oxford Centre for Diabetes, Endocrinology and Metabolism (OCDEM) are looking for male volunteers aged 18–60 years with Type 2 diabetes to take part in a study of a new treatment approach to correct low testosterone levels.

Men with Type 2 diabetes commonly have low levels of testosterone, which are linked to an increased risk of cardiovascular problems. Kisspeptin is a hormone that controls the release of testosterone, and studies suggest that levels of this hormone might be low in conditions like Type 2 diabetes.

Work by researchers at OCDEM has shown that synthetic kisspeptin hormone can restore testosterone release to normal levels in men with Type 2 Diabetes. TAK-448 is a longer-acting form of kisspeptin – that has a powerful impact on testosterone release.

This study aims to find out how much TAK-448 people should take, and how often they should take it, in order to achieve the most beneficial impact on testosterone levels so that the drug can be evaluated further in future, larger studies.

Participants will need to attend the OCDEM Clinical Research Unit at the Churchill Hospital frequently, for up to 12 weeks. The majority of visits will be short morning visits, with a smaller number of longer visits.

Participants will be compensated for their time and inconvenience at the completion of the study and will be refunded for all reasonable travel costs that result from taking part.

For more information, please contact Sarah White (Research Nurse) on 01865 857287 or at cru@ocdem.ox.ac.uk.

Volunteers needed: Type 1 diabetes study

Oxford Centre for Diabetes, Endocrinology and Metabolism, Churchill Hospital

We are running a study to investigate how a glucose-lowering drug called lixisenatide affects people with type 1 diabetes. We are looking for people who:

- Have type 1 diabetes
- Using insulin to treat the diabetes
- Generally in good health
- Aged between 18 and 70

You will be reimbursed for travel expenses and your time (Payment for attending study visits would be a maximum of £450).

Please get in touch for further information

E-mail: cru@ocdem.ox.ac.uk

Tel: 01865 857287

All information collected will be strictly confidential. Should you decide to take part in this study, your GP will be informed unless you wish otherwise.

Help researchers find out what strategies people use to lose weight

Researchers from the Nuffield Department of Primary Care Health Sciences are inviting anyone trying to lose weight through diet and/or exercise to get involved in a new online study investigating what strategies people use to achieve their weight-loss goals. The Oxford Food and Activity Behaviours (OxFAB) study focuses on what people actually do, as opposed to the things health professionals and weight loss programmes ask them to do. By understanding which strategies are associated with success, the researchers hope to develop more effective guidance and advice for health professionals advising people on how to reach their weight-loss goals. www.oxfab.org

Healthy volunteers needed for drug study

Healthy volunteers are needed for a study investigating the effects of the antidepressant Bupropion on the processing of emotions.

If you are healthy with no history of a psychological disorder, please contact Nathan for more information:

nathan.huneke@medsci.ox.ac.uk

Time and expenses will be reimbursed.

The study involves taking a single dose of Bupropion.

Central University Research Ethics Committee: MSD-IDREC-C3-2014-004

Men needed for a brain study!

Interested in the workings of the human brain? Want to help research in psychiatry?

We need healthy men, aged 18 to 60, for a study of the effect of a gene and a drug on the performance of simple computer tasks.

If you take part, we will ask you to:

- Provide a cheek swab (to see which form of the gene you have) then, if suitable, come to the lab and:
- Complete some questionnaires;
- Take a single dose of a drug or a dummy pill and carry out simple reward tasks and tests of the processing of emotions.

The study will take around 6 hours of your time, for which you will be reimbursed.

INTERESTED? For more information,

without any obligation, please email comt.study@psych.ox.ac.uk

(South Central – Berkshire Research Ethics Committee REF number: 14 SC 0035)

Clinical Vaccine Trials

The Jenner Institute are developing vaccines against major global diseases and want healthy volunteers aged 18 to 55 to take part in trials of them

Participants will be paid compensation for expenses and time put aside to take part. Each study will require short visits to an outpatient clinic over 4–12 months. To find out more and register, visit the [Jenner Institute website](#).



Student Opportunities

Undergrad students: Take part in a study on students' views and experiences

Want a chance to win £25 in a prize draw?

Postgraduate researchers at the University of Sussex are looking for undergraduate students currently studying in UK to participate in our questionnaire on academic motivation.

Participation in this study involves the completion of one questionnaire relating to your thoughts, feelings and academic motivations.

Please click here to access the questionnaire (it should approximately 10 minutes to complete the questionnaire)

https://sussexpsychology.qualtrics.com/SE/?SID=SV_eeMth1yVVxEQ6vH

Thank you so much for helping with this research.

Medical students: Take part in survey on social media in medical school education

Manjinder Brom, a 4th year medical student at the University of Birmingham, is conducting an anonymous survey to establish the role of social media in medical school education. The survey is open to all medical students and the aim is to use the results to make recommendations regarding optimal utilisation of social media for medical school education.

If you would like to take part, please see: <https://www.surveymonkey.com/s/somemedschool>

Medical Undergraduate Conference

Royal College of Physicians and Surgeons of Glasgow. Saturday 28 March

The fifth annual medical student conference at the Royal College of Physicians and Surgeons of Glasgow is a high quality educational event attracting medical students from across the UK. It provides the opportunity to learn from some fantastic speakers, gain some experience in practical procedures and also the chance to submit a poster for presentation. This is a unique opportunity to add to both your knowledge and your CV – full details of the poster presentations can be found in the document below, 'call for abstracts 2015'.

The day will consist of a morning of lectures on topics such as Ebola, Antibiotic Resistance, Sports and Exercise, whilst the afternoon will feature practical workshops covering the following:

- Central line insertion
- Chest drain insertion
- Analgesic prescribing
- Airway management

There will also be a drinks reception from 5–6pm after the conference.

Speakers will include:

- **Dr Sharon Irvine**, Clinical Fellow and Registrar in Infectious Diseases and Microbiology, University of Glasgow
- **Dr Christine Peters**, Microbiology Consultant, Southern General Hospital
- **Dr John A MacLean**, Chief Executive, The National Stadium Sports Medicine Centre, Hampden Park

For more information and to book visit the Royal College of Physicians and Surgeons of Glasgow's [events page](#).

Attention medical students: RCPG launches videos and hosts events to promote general practice

The Royal College of General Practitioners launches first-ever recruitment video to attract more GPs into frontline patient care:

<http://www.rcgp.org.uk/news/2015/january/rcgp-launches-first-ever-recruitment-video-to-attract-more-gps-into-frontline-patient-care.aspx>

Hitting the road to recruit more GPs: <http://www.rcgp.org.uk/news/2015/january/hitting-the-road-to-recruit-more-gps.aspx>

Other Items of Interest

MRC launches good research practice e-learning module

The Medical Research Council (MRC)'s new e-learning package on good research practice has been launched and is available to all researchers

The package is available from [the MRC Regulatory Support Centre website](#) where anyone can access it (you will need to register first).

The module, which includes case studies, will be of particular interest to MRC grant-holders and employees but covers themes likely to be relevant to many other types of researcher. These themes include planning and conducting research, ethics in research, collaboration, research data management, integrity in peer review, managing conflicts of interest and reporting/disseminating research findings.

Other related training available to University researchers is summarised and available at <http://www.admin.ox.ac.uk/curec/training/>.

Fancy a quick workout in your lunch break?

Sign up for Zumba Light classes, Tuesdays at JR Hospital



FREE Zumba classes with Ali Vaughan

Starting 10th March

Tuesdays in Tingewick Hall, 12 –12.30pm

(Open to all OUH and University staff)

Fancy a quick workout in your lunch break? All the fun of a regular Zumba Class, but without the sweat! Suitable for all ages, abilities and fitness levels.

For more information please see www.alisonvaughan.zumba.com

or email ali.vaughan@ndm.ox.ac.uk

Would you like to edit medical papers for OUP?

[Oxford Language Editing](#) offers English language editing support to researchers around the world. Our team of highly qualified freelance editors work with the researchers to ensure their academic writing is expressed in the highest quality English.

In our two-stage process, work is reviewed by both a language editor and an academic editor. We are currently recruiting more freelance academic editors, who are experts in medicine and life sciences. As an academic editor, you would be responsible for the second revision of the work, ensuring that discipline-specific content is clearly expressed and all language issues have been corrected.

Would you like to join our esteemed list of medical freelancers? We are looking for candidates who would be able to edit papers in:

- cardiology
- genetics
- infectious diseases
- nephrology
- oncology
- surgery
- toxicology
- neuroscience
- psychiatry
- cognitive science

If you are interested, please email mailto:ole@oup.com with:

- your CV
- academic areas of interest
- summary of any previous editing work

- summary of publications

The PRoF award 2015 – call for candidates

Ghent University is looking for innovative projects in the broad domain of healthcare applications to enter an award competition organised by the PRoF chair, Prof. dr. R. Peleman

The laureates of this competition will be invited for the award ceremony chaired by former President of the European Council Herman Van Rompuy, during an international symposium in Ghent. The award is for €10,000.

The competition accepts all innovations created in the healthcare domain (medical, care, ageing society, services, logistics etc.) and more specifically one of the following areas:

- new concepts or theories in healthcare models (medical, care, ageing society)
- new insights regarding healthcare infrastructure (architecture and/or equipment)
- innovating healthcare processes and/or procedures
- innovating healthcare products and/or services

The competition targets all innovations that are in a late research phase (e.g. proof-of-concept) or early market phase (pilot phase, first market introduction).

For further details and for application information [click here](#). The deadline for applications is **Wednesday 1 April**.

Green Templeton College Medical Day

Saturday 14 March

You are very welcome to join us at our forthcoming Medical Day which will take place at Green Templeton College on Saturday 14 March, sponsored in memory of [Dr Marvin Lee Weil MD](#).

We are offering a day-long programme of events, including talks, discussions and tours for alumni, fellows, common room members and current students. A buffet lunch and afternoon tea will be provided.

Tickets:

Tickets are priced at £10 for Oxford Alumni/Fellows/Friends and £15 for a guest ticket.

Students are free of charge.

***Please book [here](#).**

Further information: <http://talks.ox.ac.uk/talk/index/20534>

Digital Health Hack Weekend 21 – 22 March

The DHOx Health Hack Weekend aims to bring together people of different skill sets and expertise to work together on new digital health projects

Join [Digital Health Oxford \(DHOx\)](#) for their next hack weekend on 21 – 22 March at The Oxford Launchpad, Said Business School.

Bring your ideas and problems to solve, join a team, and come up with great solutions. Whether you're a clinician, software developer, designer, patient, engineer, researcher or entrepreneur, come along and join in.

You can see the great solutions that were worked on by teams at the last hack weekend [here](#). For further information and to register [click here](#). If you have any questions about the event e-mail info@dhox.org.

DHOx

Digital Health Oxford

Register Now for the 6th Oxford Neuroscience Symposium

Wednesday 25 March, Mathematical Institute, Andrew Wiles Building

[Register for free](#)

[Programme](#)

This is the showcase for ground breaking Oxford neuroscience, psychology and psychiatry research covering all areas from basic science through to experimental medicine. This year the symposium will



be bigger and better than ever before. For this we have moved to the new Mathematical Institute which has the largest purpose-built lecture theatres and conference facilities in Oxford.

The programme features talks from cutting edge researchers across the key departments engaged in neuroscience, psychology and psychiatry research; along with industry stands and, for the first time, lunchtime workshops on publishing and intellectual property.

This year we are delighted to have secured Sir Roger Penrose FRS, Emeritus Rouse Ball Professor as our guest speaker who will be talking on: 'The problem of consciousness: does this probe the foundations of physical science?'

The poster sessions provide the perfect forum to reach out and engage other researchers from departments and multidisciplinary units across four University of Oxford campuses as well as VIP visitors from our external stakeholders including representatives from funders and industry.

Once again we will be running the Sherrington Poster Prize with a first prize of a £150 Amazon voucher and runners up prizes of £50 vouchers. **Posters MUST be A0 portrait**

Academic Medical Forum Day Conference

An opportunity to find out about current clinical research in Oxford, Tuesday 14 April 2015



Venue: Lecture Theatre 1, Level 2 (main building), John Radcliffe Hospital, Headley Way, Oxford OX3 9DU

Times: 09:30am – 16.30pm (registration from 09:00 am)

Registration: Free to attend, email oucags@medsci.ox.ac.uk to book

Guest speakers:

“Effective applications for NIHR doctoral, post-doctoral and Clinician Scientist opportunities”

- Professor Sallie Lamb (Co-Director of the Oxford Clinical Trials Rehabilitation Unit, Kadoorie Professor of Trauma Rehabilitation & Deputy Chair to the NIHR Clinician Scientist Panel)
- Dr James Fenton (Assistant Director, NIHR Institutional Awards Programme)

The Academic Medical Forum is an excellent opportunity to find out more about the clinical research currently being carried out in Oxford, and to network with clinical academic in training, researchers and senior academics. Presenters at all stages of the research process are drawn from Oxford's clinical academic community and invited to talk about aspects of their research project from formulation of their research question through to interpretation of findings.

If you are interested in attending, please email oucags@medsci.ox.ac.uk

Childhood Cancer Research Group (CCRG) Scientific Meeting

Thursday 16 April, St Anne's College

This Scientific meeting is being held to showcase the achievements of the University of Oxford Childhood Cancer Research Group (CCRG) which undertook research work, largely based on the data it held as custodian of the UK National Registry of Childhood tumours (NRCT) from 1975–2014, when Dr Michael Murphy retired and the CCRG ceased to be.

Registration including lunch, refreshments and early evening drinks reception would cost £30 per delegate.

For further information, please see <http://www.cclgmeetings.org.uk/ccrg-scientific-meeting/>

Oxford Parkinson's Disease Centre Research Day

Monday 20 April, 9am–7pm

Venue: Mathematics Institute

One-day research meeting focused on Parkinson's

International and national keynote speakers

Research presentations including clinical studies, imaging, genetics, proteomics, neuronal cells and animal models.

Researchers wishing to attend can register at www.opdc.ox.ac.uk/research2015

- **Abstract submission deadline Friday 20 March Registration closes Friday 10 April**

The CRUK Oxford Centre Annual Symposium is now open for registration

Mathematical Institute, Friday 5 June

The CRUK Oxford Centre Annual Symposium is a full-day event, including an evening drinks and canapé reception. The Centre are pleased to confirm that **Professor Sir David Lane** will be giving the keynote speech, a full list of speakers will be announced soon.

To register please complete the [online form](#). You can also use this form to upload any abstract submissions. There are a limited number of places available so **please register as soon as possible**.

Tickets are exclusive to centre members, you can become a centre member by filling in the form [here](#).



44th Annual Conference of the Society for Academic Primary Care

Wed 8 – Fri 10 July

Hosted by the Nuffield Department of Primary Care Health Sciences, the Society for Academic Primary Care Annual Conference attracts over 350 people each year involved in research or teaching across all areas of primary care, and takes place this year in the Maths Institute from 8–10 July 2015.

For full information and registration details visit: <http://www.sapc.ac.uk/index.php/conf2015>

ContentMine Workshop at the Wellcome Trust

13–14 April 2015. Darwin Room, Wellcome Trust, 215 Euston Road, London NW1 2BE

Content mining technologies hold much potential for maximising scientific discovery and the reuse of research through automatedly searching, indexing and analysing the scientific literature.

This workshop aims to educate and engage researchers who are interested in using mining technologies in the biomedical and life sciences. You will receive training in research methods and cutting edge technologies before applying these skills to team projects, which will be presented to invited funders and policy makers on the final afternoon. We additionally offer a unique opportunity to participate in a high level policy discussion about the future of content mining for science and innovation in the UK.

Thanks to the generous support of the Wellcome Trust, this workshop is free but places are limited to 25. For more information and to register, please visit <https://github.com/ContentMine/WellcomeTrust-April2015>



Bioactive Lipids in Cancer, Inflammation and Related Diseases

14th International Conference, 12 – 15 July 2015, Budapest

The conference series on Bioactive Lipids in Cancer, Inflammation and Related Diseases was started in 1989 when its first conference was held in Detroit, Michigan. Subsequent meetings were held around the globe. This year's conference will be held in Budapest, Hungary at the Sofitel Chain Bridge Hotel.

The goal of this 28 year meeting series is to promote the exchange of ideas between scientists of diverse backgrounds from around the world. And to provide a forum for the dissemination of the latest scientific information on bioactive lipids in health and disease as it relates to cancer, inflammation, and inflammation associated diseases such as cardiovascular, diabetes, psoriasis, and Alzheimer's, nephrology, arthritis and dermatology.

For more information and to register [click here](#).