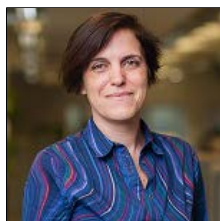


LAB TALK

In this issue, we talk to Dr Ann Van den Bruel, Associate Professor in the Nuffield Department of Primary Care Health Sciences and Director of the NIHR Diagnostic Evidence Cooperative.

Tell us a little about your role

I am a Senior Clinical Research Fellow at the Nuffield Department of Primary Care Health Sciences. I am also the Director of the National Institute for Health Research (NIHR) Diagnostic Evidence Co-operative Oxford, which aims to facilitate the development of new diagnostic tests for primary care. My role is to coordinate and supervise the work being undertaken by our multidisciplinary team of researchers and support staff. In addition, I also run my own studies, which are mostly on diagnostic questions in primary care, and teach diagnostic test evaluation to postgraduates.



[Read more...](#)

BOARD BUSINESS

In this regular feature, Dr David Bryan, Divisional Secretary, provides a summary of the Medical Sciences Board's activity

At its meeting in June, the Medical Sciences Board:

- (1) received and discussed a report from the University's Chief Information Officer, Professor Anne Trefethen, on the University's investments in major IT projects, considered the difficulties that some of these projects have experienced and also how the Board might be briefed on progress in future;
- (2) received and noted a report on Athena SWAN developments;
- (3) received a report from the Board's Educational Policy and Standards Committee and agreed after discussion to endorse the committee's approach to addressing the recommendations of the report of the review of the Standard Undergraduate Medical Course;

[Read more...](#)

ATHENA SWAN NEWS

In this issue:

- (1) [ParentsNet – A forum for parents](#)
- (2) [HeForShe](#)
- (3) [SUSTAIN](#)
- (4) [Staff Networks](#)
- (5) [Become a panellist for the Equality Charters](#)
- (6) [OUCAGS Career Development Support for Clinical Lecturers](#)
- (7) [Sign up to the Women for Media UK initiative](#)
- (8) [Events](#)
- (9) [Articles and Resources](#)

[Read more...](#)



IT NEWS

In this issue:

- (1) [MSD took home awards in nearly every category at OxTALENT on 16 June](#)
- (2) [Do you have an idea for a connected product or digital service that could make Oxford a better, smarter city? Visit The Smart Oxford Challenge](#)
- (3) [WebLearn WISE – help to improve your students' WebLearn experience](#)
- (4) [Storage as a Service from IT Services](#)
- (5) [Sharpen up your IT skills for the next academic year with the ITLP Portfolio](#)
- (6) [Putting Oxford's entrepreneurial ecosystem on the map](#)
- (7) [Academic IT helps the BRISKit project – Biomedical Research Software as a Service](#)

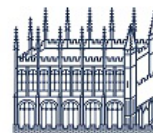
[Read more...](#)

LIBRARY NEWS

In this issue:

- (1) [British National Formulary and British National Formulary for Children – free access online to all users](#)
- (2) [Medical Students – new ebooks available](#)
- (3) [Bodleian Centre for Digital Scholarship – call for volunteers](#)
- (4) [New resource: Oxford Medical & Surgical Case Reports](#)

[Read more...](#)



Bodleian Libraries
UNIVERSITY OF OXFORD

OPPORTUNITIES AND UPDATES

Important Updates

Are you applying for Wellcome Trust funding? Make sure you have an ORCID ID From August 2015 the Wellcome Trust requires lead applicants to provide an ORCID identifier when submitting a grant application

Public Consultation: Precision Cancer Medicine Institute, Old Road Campus Fri 17, Sat 18 July

Public Consultation: Tinbergen Extension and Refurbishment, South Parks Road Fri 17, Sat 18 July

New university-wide GRAD Challenge 2015 Course For DPhil students (in year 2+) from all departments in the University

OUCAGS New Website Now Live Find out more about clinical academic medicine with Oxford University Clinical Academic Graduate School (OUCAGS)

Staff networks Oxford women's, Race Equality, BME, LGBT, Disabled staff networks

Abandoned bikes Timetable for removing suspected abandoned bicycles announced

Enterprising Oxford is looking to profile startups and entrepreneurs

Funding Opportunities

The Harrington Prize for Innovation in Medicine Call for nominations now open, deadline Friday 28 August.

MRC Proximity to Discovery Second Call Now Open Funding to support industry engagement. Deadline Wednesday 30 September.

OUCAGS Career Development Support for Clinical Lecturers: Call for Applications Deadline 9am on Tuesday 4 August

ERC Starting Grant 2016 Workshops Final July workshop, Wednesday 15 July, 9.30am – midday
Mindful Trust Research Awards Call now open, deadline 31 July 2015.

Engagement Opportunities

The Smart Oxford Challenge Do you have an idea for a connected product or digital service that could make Oxford a better, smarter city?

Become a Mozilla Fellow for Science Are you a champion of open science and open data? Mozilla is seeking researchers eager to advance openness in science and data within their institutions.

Volunteer Opportunities

Women In pain Study, Oxford (WIPSOx) now recruiting participants

'Evaluating Optimal Vaccine Schedules against Ebola' (EVOLVE) study Oxford Vaccine Group study, recruiting now

Seeking PAID participants for psychology study The Department of Experimental Psychology is seeking native English speakers aged 18+, for a study investigating how humans understand and process short stories about common social situations.

Healthy volunteers and depressed individuals required for brain scanning study

Healthy volunteers needed for vaccine study testing the effectiveness of two Ebola vaccines

The Oxford Vaccine Centre Healthy Volunteers Database

Other Items of Interest

Oxonbike cycle hire scheme expands to the Science Area

OUH Trust unveils new bike docks as part of wider Oxford scheme Oxford Health NHS Foundation Trust (OHFT) has formally unveiled its new bike docks as part of Oxford's growing version of the 'Boris bike' scheme.

Cardiothoracic Surgery: Survey for medical students Share your views on cardiothoracic surgery as a speciality and as a potential career

The Global Response to Ebola: Implications for Future Drug & Vaccine Development Wednesday 15 July, Saïd Business School

Diagnostic Evidence Workshop Thursday 1 October 2015 to Friday 2 October 2015, Worcester College, Oxford

EMBO Conference: Cell therapy today: Achievements, hopes and hypes 9–12 Sep, Manchester UK

Nominations open for Oxford AHSN partnership award Deadline Mon 3 Aug

AND FINALLY...HELP US DECORATE @OXFORDMEDSCI TWITTER ACCOUNT



Help us show the world what Oxford Medical Sciences is all about, with images from your labs, classes, and events. We are looking for images, scientific or otherwise, to showcase on the division's Twitter account, [@OxfordMedSci](#). With over 3700 followers, this is a great way to promote your lab, research group, unit or department. Send your images to communications@medsci.ox.ac.uk, including a brief description, any copyright info and your Twitter username (if you're on Twitter), and we'll schedule in and promote your content over the next few months.

Need funding for industry engagement?

Deadline 30 September

The next round of the MRC Proximity to Discovery fund is now open.

The MRC P2D will support activities to build relationships between the university and industry partners and promote a culture of innovation, including knowledge exchange projects between industry and academia, industry showcases and communications and staff exchanges with industry.

Deadline 12 noon on Wednesday 30 September 2015.

For further details and how to apply [click here](#).

Lab Talk

In this issue, we talk to Dr Ann Van den Bruel, Associate Professor in the Nuffield Department of Primary Care Health Sciences and Director of the NIHR Diagnostic Evidence Cooperative.

Tell us a little about your role

I am a Senior Clinical Research Fellow at the Nuffield Department of Primary Care Health Sciences. I am also the Director of the National Institute for Health Research (NIHR) Diagnostic Evidence Co-operative Oxford, which aims to facilitate the development of new diagnostic tests for primary care. My role is to coordinate and supervise the work being undertaken by our multidisciplinary team of researchers and support staff. In addition, I also run my own studies, which are mostly on diagnostic questions in primary care, and teach diagnostic test evaluation to postgraduates.



Tell us more about the NIHR Diagnostic Evidence Co-operative

Oxford's [Diagnostic Evidence Co-operative](#) has several strands: we produce short reviews on new, promising diagnostic technology in our [Horizon Scanning programme](#). These reviews result in either new studies that are taken forward by researchers in our department, or we suggest topics to funders such as the NIHR Health Technology Assessment (HTA) programme. Secondly, we try to get a better understanding of the clinical needs of primary care clinicians: which tests do they consider useful, or what diagnostic questions are currently not addressed adequately by existing technology? Additionally, we explore the views of patients and clinicians on using new technology: what are the barriers and facilitators? We also investigate the impact new diagnostic technology makes in a new clinical setting (Abingdon's



Emergency Multidisciplinary unit) that cares for elderly patients and uses a lot of new modern diagnostic technology. Finally, our methods team develop new ways to evaluate diagnostic technology.



In addition to these research topics, we also meet with diagnostics companies from across the UK to discuss innovative tests that might be relevant to primary care. Companies come and talk to us for a variety of reasons: to get a better understanding of the diagnostic needs of primary care and the requirements of a new test to be useful, to explore collaborative projects in primary care, or to seek advice on implementing new technologies in the NHS.

Why is this work important?

Diagnostic questions are at the heart of primary care. Diagnosing a patient provides a diagnostic label that explains that person's symptoms. It directs people to the right treatment and provides guidance to clinicians and patients on how the illness might develop. Diagnostic tests are also used to monitor an illness or the treatment of that illness. But diagnostic tests may also introduce harm because they are dangerous in themselves and also because they could provide incorrect information and lead to wrong treatment decisions. Evaluating the true value of diagnostic tests is therefore important, and these evaluations should be performed in the setting where the test will be used (in our case - in the doctor's surgery).

Through our work with companies to collect the right type of evidence for their new technologies, we aim to facilitate the development of diagnostic tests that can be successfully implemented in practice, benefiting patient health and the NHS.

What's currently at the top of your to do list?

I am currently in the midst of preparing a grant application for work to develop and assess different options for managing acutely unwell children in primary care. One of the options will be to introduce a set of point-of-care tests that can support the diagnosis of serious illnesses, such as pneumonia or diabetes.



Are there any collaborations/partnerships you'd like to pursue with colleagues in Oxford?

The Biomedical Engineering Group is doing some great stuff. We have worked on vital signs measurement devices with them in the past. It would be great to present them our wish-list again.

How did you get to where you are today?

I started my career in Belgium, where I trained as a general practitioner (GP) and obtained my PhD at the University of Leuven. As a postdoctoral researcher, I



participated in a European collaboration on the diagnosis of serious infections in children (ERNIE), which introduced me to researchers from the primary care department here in Oxford. They encouraged me to apply for a NIHR Clinical Lecturer post, which led to my position here now.

Who or what inspires you, and what is life like outside of work?

Although I am no longer in clinical practice, trying to improve how we can manage patients' health problems has always been my main driver for being in research. In addition, there are many great researchers whom I greatly admire, including my own team. I get a lot of energy from working as a team and feel very fortunate with the people who I work with. When I'm not at work, I enjoy spending time with my family of four children, who always succeed in introducing me to new things.

Links

[Nuffield Department of Primary Care Health Sciences](#)

[NIHR Diagnostic Evidence Co-operative Oxford](#)

Images

Top: Dr Ann Van den Bruel

All other images: Dr Ann Van den Bruel conducting diagnostic tests

Copyright: OUIImages/Nasir Hamid

Would you like your lab/centre/unit to feature in a future issue of Lab Talk? For further information, please contact communications@medsci.ox.ac.uk.

Board Business

In this regular feature, Dr David Bryan, Divisional Secretary, provides a summary of the Medical Sciences Board's activity

At its meeting in June, the Medical Sciences Board:

- (1) received and discussed a report from the University's Chief Information Officer, Professor Anne Trefethen, on the University's investments in major IT projects, considered the difficulties that some of these projects have experienced and also how the Board might be briefed on progress in future;
- (2) received and noted a report on Athena SWAN developments;
- (3) received a report from the Board's Educational Policy and Standards Committee and agreed after discussion to endorse the committee's approach to addressing the recommendations of the report of the review of the Standard Undergraduate Medical Course;
- (4) received a report from the Board's Finance and Physical Capital Committee, noted the discussion that had taken place at the committee (with Board members present) regarding the progression of the PCMI project which had since been agreed by Council, and adopted the committee's recommendations regarding the Division's 2015-16 budget and the establishment of working groups to devise strategic financial plans, the DPAG East Wing refurbishment and the DPAG Stem Cell Facility refurbishment;
- (5) received a report from the Board's Research Committee, noted the committee's approval of the establishment of a working group to develop an institutional strategy for human tissue for research and discussed the follow-up to the University's Innovation Review, agreeing that innovation should feature on a regular basis in the Research Committee's reports;
- (6) agreed that it was content for the Trade Mark Licence agreement between the University and the Oxford University Hospitals NHS Trust to be updated to reflect the Trust's new name should its application for Foundation Trust status be successful, and for the Trust to adopt a new corporate design style for its public-facing information materials.

Athena SWAN News

Contents

1. [ParentsNet – A forum for parents](#)
2. [HeForShe](#)
3. [SUSTAIN](#)
4. [Staff Networks](#)
5. [Become a panellist for the Equality Charters](#)
6. [OUCAGS Career Development Support for Clinical Lecturers](#)
7. [Sign up to the Women for Media UK initiative](#)
8. [Events](#)
 1. [Women in Science Talk by Prof Dame Carol Robinson](#)
9. [Articles and Resources](#)
 1. [Women scientists on sexism in science](#)
 2. ['I Wasn't Always a Scientist' project video launch](#)
 3. [Female scientists' £5,000 pay gap](#)
 4. [Athena SWAN in Australia](#)

ParentsNet – A forum for parents

ParentsNet is a forum aiming to bring parents in the Medical Sciences Division into contact, giving parents the opportunity to share information and exchange goods and ideas.

This new forum has been developed by DPAG following the implementation of their Athena SWAN Bronze Award Action Plan. ParentsNet is hosted on Weblearn, a well-known University system and is subscription-based only:

<https://weblearn.ox.ac.uk/portal/hierarchy/medsci/departement/dpag/parentsnet>

People can post to and follow any of the categories below.

- Childcare
- Looking for a new home (Offered, for sale & wanted) *Equipment; toys; etc.*
- Is this normal? *Parents' offload – Here is where you ask for reassurance that you will sleep again, that teething doesn't last forever, that your teenager will merge into a reasonable adult; etc.*
- Work/life balance *How do you manage? Tips for working mums and dads.*
- Events

Please visit the site to join or contact Sara Bouskela ([✉sara.bouskela@dpag.ox.ac.uk](mailto:sara.bouskela@dpag.ox.ac.uk)) with questions.

[Top](#)

HeForShe

Oxford University has signed up as one of ten prominent world universities backing the United Nations' HeForShe gender equality movement. UN Women launched HeForShe last September with the aim of mobilising one billion men and boys in support of gender equality. The UN has now unveiled world leaders, businesses and universities, including Oxford, as '10X10X10' IMPACT champions for the movement. As a university champion, Oxford has pledged to increase the number of women in senior positions, to build on work creating a safer campus for its whole community and to promote gender equality among its peers in the world's research-intensive universities. Oxford signed up to HeForShe at a ceremony at the University's Kellogg College, attended by United Nations Under Secretary-General and Executive Director of UN Women, Dr Plumzile Mlambo-Ngcuka.

www.ox.ac.uk/news/2015-06-18-oxford-university-commits-un-gender-equality-movement

[Top](#)

SUSTAIN

Twenty female scientists have been selected to take part in a programme to help more women achieve senior research positions. The SUSTAIN programme, run by the Academy of Medical Sciences, offers a year-long programme of training, mentoring and peer networking around research. Oxford University scientists **Nayia Petousi**, of the Nuffield Department of Medicine, and **Rebecca Morris**, of the Department of Zoology, are amongst those who will take part.

[Top](#)

Staff Networks

The Equality and Diversity Unit run several networks for University Staff. To join a network, please follow the links below.

Oxford women's network: <http://www.admin.ox.ac.uk/eop/gender/own/>

Race Equality Newsletter: <http://www.admin.ox.ac.uk/eop/race/ren/>

BME staff network: Contact [✉Hanan.Yanny@sbs.ox.ac.uk](mailto:Hanan.Yanny@sbs.ox.ac.uk) (Network Secretary) to join

LGBT staff network: <http://www.admin.ox.ac.uk/eop/sexualorientation/informationforstaff/>

Disabled staff network: Contact: [✉Caroline.Moughton@admin.ox.ac.uk](mailto:Caroline.Moughton@admin.ox.ac.uk) to join

See also: The Equality and Diversity Unit <http://www.admin.ox.ac.uk/eop/>

[Top](#)

Become a panellist for the Equality Charters

Participating in an equality charter mark panel gives you an invaluable experience of the assessment process. You will come away with a detailed understanding of how panels work, and insight into how other institutions analyse their data and make progress on their action plan.

Reading through a range of applications will also give you plenty of ideas you may wish to consider implementing in your institution.

Being on a panel member also gives you an opportunity to build your professional networks and share learning among peers.

The ECU is always seeking panellists with the following roles and specialisms:

- academics
- professional services staff
- equality and diversity practitioners
- HR practitioners
- representatives of research councils, research institutes, learned societies and professional bodies

More information about becoming a panellist: www.ecu.ac.uk/get-involved/become-charter-mark-panellist/

[Top](#)

OUCAGS Career Development Support for Clinical Lecturers

Applications are invited from post-doctoral Clinical Lecturers working within the Oxford Deanery/University of Oxford for funding to support the development of their research career. The deadline for applications is **9am on 4 August**. The guidelines can be found here:

<https://weblearn.ox.ac.uk/x/KUtOnf>

[Top](#)

Sign up to the Women for Media UK initiative

The 30% Club have recently set up Women for Media UK – a database of female leaders in business, finance, government and the not-for-profit sectors who are available for media comment on the key topics of the day.

<http://womenformedia.30percentclub.org/>

[Top](#)

Events

Women in Science Talk by Prof Dame Carol Robinson

The aim of these sessions is for the speaker to share their own experience of a career in science & how they have balanced this career with lifestyle, and for them to provide advice to scientists.

Professor Robinson is the first female Professor of Chemistry at the University of Oxford and was previously the first female Professor of Chemistry at the University of Cambridge. She is renowned for pioneering the use of mass spectrometry as an analytical tool and for her ground-breaking research into the 3D structure of proteins.

Date: Wednesday 30 September 2015

Time: 12:00–13:00

Venue: Wellcome Trust Centre for Human Genetics (Rooms A & B), Headington OX3 7BN.

If you would like to attend the talk followed by a sandwich lunch, please notify, Donna (brcpa@well.ox.ac.uk).

[Top](#)

Articles and Resources

Women scientists on sexism in science

A podcast of Radio 4's Inside Science on the subject of sexism in science, following the comments from Tim Hunt about women in laboratories. Adam Rutherford is joined by five female researchers at differing stages of their scientific career to explore whether the culture of science – from school, through university and into the lab – is rigged against women getting grants, staying in the world of research and getting promotion. Do the pressures on scientists to publish many papers militate against women getting to the top of the profession? is there unconscious bias against women making it in science?

www.bbc.co.uk/programmes/b05y11vz

[Top](#)

'I Wasn't Always a Scientist' project video launch

In April 2015, the Royal Society launched their first three videos on YouTube featuring scientists Dr Alexandra Brand, Professor Patricia Sanchez Baracaldo and Professor Simon McQueen-Mason who share their stories of the non-traditional paths taken into their scientific careers. The aim of this project is to inspire those not working in science to consider a STEM education or career.

<https://royalsociety.org/policy/projects/leading-way-diversity/i-wasnt-always-a-scientist/>

[Top](#)

Female scientists' £5,000 pay gap

The Sunday Times reported: Female science professors are paid an average of £5,000 less than their male counterparts by British universities, new figures have shown. Freedom of information requests were sent to more than 90 British universities, focusing on senior academics. The London School of Economics has 50 male professors in the mathematics, geography and economics departments who earn an average of £117,000 a year while the nine women professors earn £96,000. Similarly, the 126 male professors in Bristol University's science faculty earn an average of £91,500 while their 11 female equivalents get just £70,300. This contrasts with the situation at Cambridge and Oxford, which now offer similar salaries to male and female science professors.

www.thesundaytimes.co.uk/sto/news/uk_news/Science/article1574420 (Subscription required)

[Top](#)

Athena SWAN in Australia

The Equality Challenge Unit is working with local partnership organisations to introduce the Athena SWAN Charter to Australian higher education institutions.

In order to help achieve this, the ECU will soon be welcoming Dr Zuleyka Zevallos on a six month secondment to their London office to learn about the implementation of the Athena SWAN Charter. Dr Zevallos manages the Science Australia Gender Equity (SAGE) program of the Australian Academy of Science (AAS).

www.timeshighereducation.co.uk/athena-swan-set-to-spread-wings-and-head-down-under

[Top](#)



IT News

Contents

1. [MSD took home awards in nearly every category at OxTALENT on 16 June](#)
2. [Do you have an idea for a connected product or digital service that could make Oxford a better, smarter city? Visit The Smart Oxford Challenge](#)
3. [WebLearn WISE - help to improve your students' WebLearn experience](#)
4. [Storage as a Service from IT Services](#)
5. [Sharpen up your IT skills for the next academic year with the ITLP Portfolio](#)
6. [Putting Oxford's entrepreneurial ecosystem on the map](#)
7. [Academic IT helps the BRISKit project - Biomedical Research Software as a Service](#)

MSD took home awards in nearly every category at OxTALENT on 16 June

On Tuesday 16 June Academic IT Services hosted the annual OxTALENT Awards. OxTALENT is a competition and a ceremony designed to recognise and award colleagues and students from across the University for creative use of digital technologies in teaching, learning and outreach.

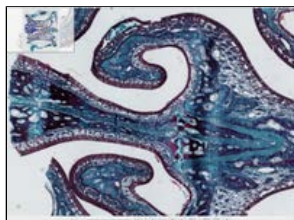


Innovative Teaching with Technology

Winner: Peter Judge for Clickers in Biochemistry



Runners-up: Damion Young & Jon Mason for 'PULSE - Pop-Up Learning Space Experiment'



Use of WebLearn to Support Teaching, Learning or Outreach

Runner-up: Dr Richard Harrington for Promoting Online Learning and Collaboration with Graduate-Entry Medical Students



Outreach and Public Engagement: General

Winners: Kinan Muhammed & Louwai Muhammed for 'Syria Scholar'



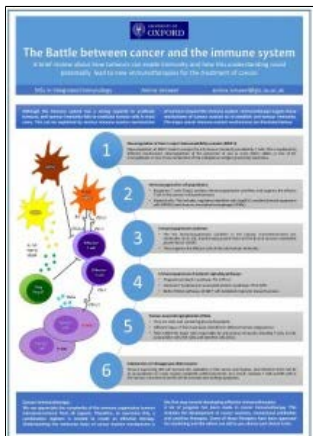
Outreach and Public Engagement: TES Connect

Joint Winner: Lizzie Burns for 'CSlide': a Nobel Prize–Winner Inspires Science, Art and Creativity



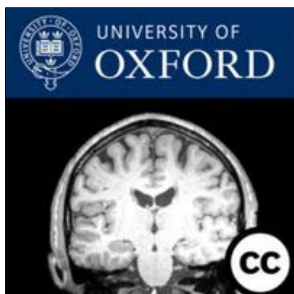
Conference Posters

Honourable Mention – Most Innovative Poster: Amina Ismael for 'The Battle Between Cancer and the Immune System'



Academic Podcasting

Joint Runners-up: Daniel Maughan and Charlotte Allan for Psychiatry Podcasts



Top
Do you have an idea for a connected product or digital service that could make Oxford a better, smarter city? Visit [The Smart Oxford Challenge](#)

Do you have an idea for a connected product or digital service that could make Oxford a better, smarter city?

Apply online before Monday 7 August for the [Smart Oxford Challenge](#)

If you are selected, you will receive support on the day (business, technical, marketing) to develop your idea and showcase it to city officials and the press in an exclusive evening showcase.

Ideas will be selected on their ability to cater to Oxford's unique challenges in new and innovative ways.

Top

WebLearn WISE – help to improve your students' WebLearn experience



The WebLearn team is pleased to announce that central funding has been approved for the WebLearn Improved



Student Experience (WISE) Project. Please see more information about the project in this blog post:

<https://blogs.it.ox.ac.uk/adamweblearn/2015/01/weblearn-improved-student-experience-wise-project/>

[Top](#)

Storage as a Service from IT Services

The STaaS (Storage as a Service) project has been developed due to the ever increasing amount of data being generated and analysed across the University and the requirements that these, often large-scale, datasets are securely preserved, properly curated and made easily accessible. Existing methods for addressing these requirements have often lacked the flexibility and agility necessary to enable operational excellence, support changing lines of study and research or allow rapid project start-up.

Therefore, the STaaS project aims to implement storage architecture that offers an initial range of services to address current demands. This range will be scalable, available on-demand and online, and has the potential to be integrated with other storage platforms, whether centrally, locally or externally provided.

These aims are closely aligned with the IT Strategic Plan, specifically:

- to reduce replication of services by providing central services of sufficient quality and cost effectiveness that departments and colleges choose to opt in;
- to develop a coordinated approach in order to provide infrastructure support that addresses the requirements of large-scale research data storage and analysis;
- to be responsive to the requirements of the University through increased agility & innovation;
- to implement a hybrid, tiered storage platform to support backup, active storage and long-term preservation services infrastructure

The STaaS project is now building momentum, with an initial requirement review completed and a range of desired services identified. The project team is defining a roadmap for services and the individual project work streams and activities required to deliver this.

For more information kindly go to the project blog located here: <https://blogs.it.ox.ac.uk/staas/>

[Top](#)

Sharpen up your IT skills for the next academic year with the ITLP Portfolio

Are you planning to write up over the summer? Or sharpening your IT skills ready for the next academic year? Get your IT skills up to speed, using study materials from the ITLP Portfolio.

You can download all sorts of self-study resources from the ITLP Portfolio at <http://portfolio.it.ox.ac.uk>. There are course handbooks from our popular taught courses, along with bundles of work files so you can try out new techniques and practice your new skills. Plus there are links to how-to videos and websites, tips & tricks and useful articles from our own team of IT Teachers.



[Top](#)

Putting Oxford's entrepreneurial ecosystem on the map



Nesta & Tech City UK are mapping Oxford's entrepreneurial ecosystem (as well as London's & Cambridge's).

Their questionnaire is here:

http://ec2-54-86-183-112.compute-1.amazonaws.com/Sites/index.php?option=com_chronoforms&chronoform=London&utm_content=buffer57584

There's more background here:

<http://www.gern.co/gern-mapping-project-extends-to-15-cities/>

The GERN Ecosystem Mapping Project has already produced visualization tools for two cities, New York City (mapped by Endeavor Insight) and Cairo (mapped by Mercy Corps). These maps can be accessed through the following links:

nyctechmap.com

cairotechmap.com

MaRS and Nesta were the first to join lead member Endeavor Insight for this collaborative project. These three original members have developed the mission of extending the mapping work to 100 cities around the world within the next five years, which would yield the first

ever large comparable set of ecosystem maps. Nesta is funding an open method guide that will make it possible to achieve replication in 100 cities.

[Top](#)

Academic IT helps the BRISKit project – Biomedical Research Software as a Service

Over the past few months, the Research Support team within IT Services has been advising an interesting project known as BRISKit, based within the University of Leicester. BRISKit is an open source software platform for conducting biomedical research. It is deployable either locally or in the cloud, and it enables biomedical and translational researchers to securely manage and combine datasets. BRISKit grew from funding provided by JISC and HEFCE, and is now a strategic project for the newly reformed Jisc, and is likely to make use of another interesting Jisc project, their Shared Data Centre.



The IT Services Research Support team helped the project by consulting on the intellectual property in their code, their open source licence and their potential business models. If you would like to know more about the project, you can contact the Research Support team, or [BRISKit website](#).

[Top](#)

Library News

Contents

1. [British National Formulary and British National Formulary for Children – free access online to all users](#)
2. [Medical Students – new ebooks available](#)
3. [Bodleian Centre for Digital Scholarship – call for volunteers](#)
4. [New resource: Oxford Medical & Surgical Case Reports](#)

British National Formulary and British National Formulary for Children – free access online to all users

Access to the BNF and the BNFC is now available free without any kind of log-in required from NICE at www.evidence.nhs.uk/formulary/bnf/current and www.evidence.nhs.uk/formulary/bnfc/current.

This is available to any user whether they are employed by the MSD, OUH Trust or a member of the public.

[Top](#)

Medical Students – new ebooks available

We are pleased to inform you that we have purchased a number of new ebooks, primarily to supplement Medical Students reading lists. These will be listed in SOLO for easy off-campus access:

- Essentials of clinical immunology – Chapel, Helen
- Radiology at a glance – Chowdhury, Rajat
- Neurological examination made easy – Fuller, G.
- 150 ECG problems – Hampton, John
- Clinical surgery – Henry, M.M. & Thompson, J.M.
- Neurology and neurosurgery illustrated – Lindsay, Kenneth W.
- Communication skills for medicine – Lloyd, M. & Bor, R.
- Master Medicine : Clinical anatomy – Monkhouse, S.
- Obstetrics and Gynecology at a Glance (4th Edition) – Norwitz, Errol R.
- Llewellyn-Jones fundamentals of obstetrics and gynaecology – Oats, J & Abraham, S.
- Sociology as applied to medicine – Scambler, G.
- Infections of the Central Nervous System – Scheld, W. Michael
- Textbook of general practice – Stephenson, Anne
- Bailey & Love's short practice of surgery – Williams, Norman S
- Anaesthesia and intensive care A-Z – Yentis, Steven M.
- Crash course Neurology – Yogarajah, Mahinda

[Top](#)

Bodleian Centre for Digital Scholarship – call for volunteers

The Bodleian Centre for Digital Scholarship is a hub for innovative multidisciplinary research, enhancing the Libraries' support for research and teaching in the University of Oxford. Housed in the Bodleian's Weston Library, it is working with a digital scholarship partnership across the disciplinary breadth of the University and beyond. The Centre will support and develop empirical and reflexive approaches to innovate and transform scholarly digital practice.

The Centre is establishing an Advisory Committee, and is looking for volunteers from The MSD. It will meet termly to seek advice and perspectives across the University, hoping that its members will also become advocates for future work within their Divisions.

The centre would like to identify academic representatives from the Division. If you are interested in serving on such a committee, please contact pip.willcox@bodleian.ox.ac.uk.

[Top](#)

New resource: Oxford Medical & Surgical Case Reports

Oxford Medical & Surgical Case Reports is a new free search and discovery tool from Oxford University Press. One search quickly and easily brings together peer-reviewed case reports from across our prestigious medical journals and books collections.

Find out more at www.omscr.com/

[Top](#)

Opportunities and Updates

Important Updates

Are you applying for Wellcome Trust funding? Make sure you have an ORCID ID From August 2015 the Wellcome Trust requires lead applicants to provide an ORCID identifier when submitting a grant application

Public Consultation: Precision Cancer Medicine Institute, Old Road Campus Fri 17, Sat 18 July

Public Consultation: Tinbergen Extension and Refurbishment, South Parks Road Fri 17, Sat 18 July

New university-wide GRAD Challenge 2015 Course For DPhil students (in year 2+) from all departments in the University

OUCAGS New Website Now Live Find out more about clinical academic medicine with Oxford University Clinical Academic Graduate School (OUCAGS)

Staff networks Oxford women's, Race Equality, BME, LGBT, Disabled staff networks

Abandoned bikes Timetable for removing suspected abandoned bicycles announced

Enterprising Oxford is looking to profile startups and entrepreneurs

Funding Opportunities

The Harrington Prize for Innovation in Medicine Call for nominations now open, deadline Friday 28 August.

MRC Proximity to Discovery Second Call Now Open Funding to support industry engagement. Deadline Wednesday 30 September.

OUCAGS Career Development Support for Clinical Lecturers: Call for Applications Deadline 9am on Tuesday 4 August

ERC Starting Grant 2016 Workshops Final July workshop, Wednesday 15 July, 9.30am – midday

Mindful Trust Research Awards Call now open, deadline 31 July 2015.

Engagement Opportunities

The Smart Oxford Challenge Do you have an idea for a connected product or digital service that could make Oxford a better, smarter city?

Become a Mozilla Fellow for Science Are you a champion of open science and open data? Mozilla is seeking researchers eager to advance openness in science and data within their institutions.

Volunteer Opportunities

Women In pain Study, Oxford (WIPSOx) now recruiting participants

'Evaluating Optimal Vaccine Schedules against Ebola' (EVOLVE) study Oxford Vaccine Group study, recruiting now

Seeking PAID participants for psychology study The Department of Experimental Psychology is seeking native English speakers aged 18+, for a study investigating how humans understand and process short stories about common social situations.

Healthy volunteers and depressed individuals required for brain scanning study

Healthy volunteers needed for vaccine study testing the effectiveness of two Ebola vaccines

The Oxford Vaccine Centre Healthy Volunteers Database

Other Items of Interest

Oxonbike cycle hire scheme expands to the Science Area

OxH Trust unveils new bike docks as part of wider Oxford scheme Oxford Health NHS Foundation Trust (OHFT) has formally unveiled its new bike docks as part of Oxford's growing version of the 'Boris bike' scheme.

Cardiothoracic Surgery: Survey for medical students Share your views on cardiothoracic surgery as a speciality and as a potential career

The Global Response to Ebola: Implications for Future Drug & Vaccine Development Wednesday 15 July, Saïd Business School

Diagnostic Evidence Workshop Thursday 1 October 2015 to Friday 2 October 2015, Worcester College, Oxford

EMBO Conference: Cell therapy today: Achievements, hopes and hypes 9–12 Sep, Manchester UK

Nominations open for Oxford AHSN partnership award Deadline Mon 3 Aug

And Finally...Help us decorate @OxfordMedSci Twitter account



Help us show the world what Oxford Medical Sciences is all about, with images from your labs, classes, and events. We are looking for images, scientific or otherwise, to showcase on the division's Twitter account, [@OxfordMedSci](#). With over 3700 followers, this is a great way to promote your lab, research group, unit or department. Send your images to communications@medsci.ox.ac.uk, including a brief description, any copyright info and your Twitter username (if you're on Twitter), and we'll schedule in and

promote your content over the next few months.



Important Updates

Are you applying for Wellcome Trust funding? Make sure you have an ORCID ID

From August 2015 the Wellcome Trust requires lead applicants to provide an ORCID identifier when submitting a grant application. Please sign up for your ORCID through our new [ORCID at Oxford](#) service, to get a University-affiliated account.

Public Consultation: Precision Cancer Medicine Institute, Old Road Campus

Fri 17, Sat 18 July

There is a public consultation relating to planning for the Universities new **Precision Cancer Medicine Institute** to be based on the Churchill Hospital site. The consultations will be held for the public on Friday 17 July 16:00 to 19:00 and Saturday 18 July 10:00 to 13:00 both events to be in the Old Road Campus Research Building atrium, Old Road Campus, Headington.

All staff are invited at any of these times to the consultation, but the event will be open in advance to University staff only 12:00 to 16:00 on Friday 17 July. Members of University Estates Services and the design team will be in attendance to answer any queries you may have on this development.

Public Consultation: Tinbergen Extension and Refurbishment, South Parks Road

Fri 17, Sat 18 July

The University of Oxford invites you to attend a public exhibition to view the University's proposals to extend and refurbish the Tinbergen Building.

The University of Oxford will be submitting a planning application to Oxford City Council for a two storey extension to the southern end of the Tinbergen Building to provide additional space for chemistry teaching laboratories. The development will also require the demolition of several disused outbuildings to the rear and one "pod" on Level F to the front of the building. The University is seeking to undertake this work during the summer.

Set in the heart of the University's Science Area, the Tinbergen Building was designed by Sir Leslie Martin and built in 1970. The University is taking the opportunity with this application to undertake internal refurbishment. It is also intending to replace some of the existing 'pods' that provide the stepped profile of the building and the addition of new pods to create further accommodation and to reflect the original design concept of the building.

As part of this process, the University is undertaking public consultation as follows:

Date / Time:

Day 1: Friday 17 July 2015 between 4.00pm and 7.00pm

Venue: The St Cross Building, St Cross Road, Oxford

Day 2: Saturday 18 July 2015 between 10.00am and 1.00pm

Venue: The St Cross Building, St Cross Road, Oxford

Members of the University and the design team will be available to answer any queries you may have. We welcome feedback on the proposals prior to the University submitting a planning application for the development. A hardcopy feedback form will be available at the consultation sessions and an online version will follow on the University's website together with an electronic version of the display information. The University will review all feedback and will take it into account before details are finalised and the detailed planning application submitted.

If you have any queries regarding the event please do not hesitate to contact the University at the following email address: public.consultation@admin.ox.ac.uk.

New university-wide GRAD Challenge 2015 Course

For DPhil students (in year 2+) from all departments in the University

Come and spend these three days being challenged and challenging yourself. You'll get the opportunity to assess and audit your skills and motivation, develop new skills, think about your future career and what your next steps towards it are going to be. If you take up the challenge, you will go away with more than you expect.

On course you can expect to:

- Meet, network and work with DPhil students from across the whole University

- Tackle a range of activities and exercises, mostly in a group of about 10 students led by a tutor
- Be stretched intellectually and interpersonally
- Experience peer coaching
- Review where you are and plan what comes next

Go away with:

- An increased awareness of your skills and abilities
- New and enhanced skills
- Clarity about what your next steps will be

For more information, please see <http://www.medsci.ox.ac.uk/skillstraining/coursecatalogue/allcourses/213>

OUCAGS New Website Now Live

Find out more about clinical academic medicine with Oxford University Clinical Academic Graduate School (OUCAGS)
Read all about training in academic medicine and surgery on OUCAGS's new site <http://www.oucags.ox.ac.uk/>

Staff networks

Oxford women's, Race Equality, BME, LGBT, Disabled staff networks

Oxford women's network: <http://www.admin.ox.ac.uk/eop/gender/own/>

Newsletter: <http://www.admin.ox.ac.uk/eop/race/ren/>

BME staff network: Contact [✉Hanan.Yanny@sbs.ox.ac.uk](mailto:Hanan.Yanny@sbs.ox.ac.uk) (Network Secretary) to join

LGBT staff network:

<http://www.admin.ox.ac.uk/eop/sexualorientation/informationforstaff/>

Disabled staff network:

Contact: [✉Caroline.Moughton@admin.ox.ac.uk](mailto:Caroline.Moughton@admin.ox.ac.uk) to join

See also: **The Equality and Diversity Unit** <http://www.admin.ox.ac.uk/eop/>

Abandoned bikes

Timetable for removing suspected abandoned bicycles announced

Security Services have organised the following timetable for the removal of suspected abandoned bicycles on University land:

- Week commencing 10 August 2015 Security Services to identify and label suspected abandoned bicycles
- 20 September 2015 bicycles to be removed by approved contractor
- Week commencing 2 November 2015 Security Services to identify and label suspected abandoned bicycles
- 6 December 2015 bicycles to be removed by approved contractor
- Week commencing 14 March 2016 Security Services to identify and label suspected abandoned bicycles
- 17 April 2016 bicycles to be removed by approved contractor

Departments are encouraged to notify [✉security.control@admin.ox.ac.uk](mailto:security.control@admin.ox.ac.uk) of suspected abandoned bicycles on University land ahead of the identification weeks.

Enterprising Oxford is looking to profile startups and entrepreneurs



Enterprising Oxford
Supporting Entrepreneurial Connectivity

Enterprising Oxford, an entrepreneurship portal being developed at the University of Oxford, is looking for startups and entrepreneurs with some link to Oxford(shire) to be profiled on the site, or to talk about their experiences while in Oxford. EO aims to support and promote entrepreneurship awareness across the University and local community, by highlighting people, places and events related to entrepreneurship.

Have a look at the [Entrepreneurs Uncovered](#) we have already profiled

If you are interested in being part of our Entrepreneurs Uncovered, or adding content to our blog, please contact Leah Thompson
leah.thompson@mpls.ox.ac.uk

Funding Opportunities

The Harrington Prize for Innovation in Medicine

Call for nominations now open, deadline Friday 28 August.

The American Society for Clinical Investigation (ASCI) and the Harrington Discovery Institute at University Hospitals have announced the call for nominations for The 2016 Harrington Prize for Innovation in Medicine. The Harrington Prize, to be awarded in late 2015, will honor a scientist for notable achievements in innovation, creativity and potential for clinical application.



The Harrington Prize is the result of collaboration between The American Society for Clinical Investigation (ASCI), one of the United States' oldest and most respected medical honor societies, and the Harrington Discovery Institute, an international initiative dedicated to enabling physician-scientists to transform their discoveries into therapies that improve human health. Both organizations understand the hurdles in the way of this process and are eager to highlight physician-scientists who have navigated the path successfully.

Nominations are open to all physician-scientists both nationally and internationally and we would be honored if Oxford would submit a nomination.

The deadline for nominations is August 28, 2015.

Nomination guidelines can be found at: HarringtonDiscovery.org/ThePrize.

A committee comprising members of the ASCI Council and the Harrington Discovery Institute Scientific Advisory Board will review nominations and select the recipient. In addition to a \$20,000 prize honorarium, the awardee will deliver The Harrington Prize Lecture at the 2016 ASCI/AAP Joint Meeting (April 15 -17), participate at the annual Harrington Discovery Institute Symposium and publish an essay in the *Journal of Clinical Investigation*.

For information on prior winners of The Harrington Prize please visit HarringtonDiscovery.org/ThePrize or the-asci.org/HarringtonPrize/

MRC Proximity to Discovery Second Call Now Open

Funding to support industry engagement. Deadline Wednesday 30 September.

Do you have an innovative idea for engagement with industry? Are you planning staff exchanges or developing new ways of showcasing your work to industry partners?

The Medical Research Council's industry engagement fund, Proximity to Discovery (P2D), has been awarded to the University of Oxford to support creative approaches to building relationships with industry partners.

The MRC P2D will support activities to build relationships between the university and industry partners and promote a culture of innovation, including knowledge exchange projects between industry and academia, industry showcases and communications and staff exchanges with industry.

For further details and how to apply [click here](#).

Deadline 12 noon on Wednesday 30 September 2015.

OUCAGS Career Development Support for Clinical Lecturers: Call for Applications

Deadline 9am on Tuesday 4 August

Applications are invited from post-doctoral Clinical Lecturers working within the Oxford Deanery/University of Oxford for funding to support the development of their research career.

For application guidelines and how to apply [click here](#).

ERC Starting Grant 2016 Workshops

Final July workshop, Wednesday 15 July, 9.30am – midday

The 2016 ERC Work Programme is about to be published (although funded through Horizon 2020, the ERC operates independently of the rest of the Horizon 2020 programme: the main Horizon 2020 2016/17 work programme is not expected to be published until the autumn).

The European Team is running Starting Grant (StG) application workshops in July.

The workshops are aimed primarily at StG applicants, but prospective consolidator grant candidates are also welcome to attend. We intend, in any case, to run the workshops again in the autumn specifically for consolidator grant applicants.

The final July workshop will be held on Wednesday 15 July – 9.30 am to 12.00 pm in the Department of Physiology, Anatomy and Genetics in the Sherrington Large Lecture Theatre, Department of Physiology, Anatomy and Genetics in the Parks Road Science Area: [map](#)

Attendees of all disciplines are welcome at both workshops.

Registration is already open by [doodle poll](#)

Timeline for 2016 ERC grant applications:

- The Starting Grant call will open 23 July 2015 with a deadline of 17 November 2015
- The Consolidator grant call will open 15 October 2015 with a deadline of 2 February 2016
- The Advanced grant call will open 24 May 2016 with a deadline of 1 September 2016

Further notes:

- The reference date for determining eligibility for the 2016 call is 1 January 2016
- We understand that resubmission rules have been slightly changed. Candidates from the 2015 calls who receive an A or a B after interview but who are not funded will be eligible to reapply to the 2016 call. As 2015 candidate interviews are not taking place until September, researchers will need to decide whether to prepare an application for the 2016 call pending the results of the 2015 call. All other elements of the resubmission rules are unchanged.

Mindful Trust Research Awards

Call now open, deadline 31 July 2015.

Through the gift of a generous benefactor the Oxford Mindfulness Centre have established, the Mindful Trust Research Awards. The awards are aimed at early career researchers who have the potential to become future research leaders. These awards are intended to support such researchers to conduct a piece of original high quality work in the field of mindfulness by providing funding for direct research costs.

Examples might include providing funding to support the costs of recruiting and testing participants, of obtaining specialist training or of acquiring a necessary piece of equipment or software that will enable completion of a research project.

The Oxford Mindfulness Centre intend to offer 2-5 awards annually with a total value up to £50,000 through a competitive application, review and selection process. The first round will have a broad scope. Subsequent rounds may invite applications addressing particular topics, themes or methods.

All applications will be processed and evaluated on four criteria:

1. The **originality and importance** of the research proposal, including its ability to contribute to and extend the research field and provide leverage for future research funding.
2. The **promise** of the individual to become a future research leader.
3. The track record of **the applicant**, including relevant experience, qualifications, prior research and publications.
4. **The research environment**, including the availability of appropriate mentorship and supplementary resources to ensure that the research project reaches a successful outcome.

For more information on what is required, and how to apply, please visit our website <http://oxfordmindfulness.org/currentprojects/mindfultrustresearchawards/>

International applications are welcome for these awards.

Timeline

Applications Open: 5 June 2015

Deadline for applications: 31 July 2015

Announcement of Awards: 29 October 2015

Engagement Opportunities

The Smart Oxford Challenge

Do you have an idea for a connected product or digital service that could make Oxford a better, smarter city?

Apply online before Friday 7 August for the Smart Oxford Challenge

If you are selected, you will receive support on the day (business, technical, marketing) to develop your idea and showcase it to city officials and the press in an exclusive evening showcase.

Ideas will be selected on their ability to cater to Oxford's unique challenges in new and innovative ways.

For more information and how to apply [click here](#).



Become a Mozilla Fellow for Science

Are you a champion of open science and open data? Mozilla is seeking researchers eager to advance openness in science and data within their institutions.

Applications are now open for Mozilla's inaugural class of 2015 Mozilla Fellow for Science. Fellows will spend 10 months as community catalysts at their institutions, mentoring the next generation of open data practitioners and researchers and building lasting change in the global open science community. Fellows will receive training and support from Mozilla to hone their skills around open source and data sharing. They will also craft code, curriculum and other learning resources that help their local communities learn open data practices, and teach forward to their peers.

The Mozilla Science Lab is a Mozilla Foundation initiative exploring how the open web can improve scientific research and education. We facilitate learning about open source and data sharing, and also work to empower researchers as leaders within their communities.

This call is open to early-career researchers and students in the US, UK and Canada who are eager to receive training and support to further open research at their institution, with an initial focus on life and natural sciences. Mozilla Fellows receive a stipend as well as certain other supplements/allowances. If you have any questions, contact Mozilla at sciencelab@mozillafoundation.org.

The call closes AUGUST 14, 2015. [Click here to apply today.](#)

Volunteer Opportunities

Women In pain Study, Oxford (WIPSOx) now recruiting participants

If you are female, between 18–50 & have had musculoskeletal (including Fibromyalgia) or pelvic pain for longer than 6 months you may be eligible to take part in this study.

If you would like more information about participating please contact the study team via a private FB message, email, text or call.

Email: Lisa.buck@obs-gyn.ox.ac.uk

Text or call: 07802 861 666



The purpose of this research is to determine the levels of a variety of hormones in women with chronic pain who are of childbearing age. This study aims to investigate the extent to which hormone production is altered in women with chronic pain and whether we can identify scientific clinical features that relate to these changes. This would allow us to identify which women with chronic pain may require further investigations and treatment (for example with hormone replacement and Vitamin D) to prevent long term complications. Additionally, these results will inform the design of future research investigating whether hormones can be used to reduce the suffering associated with chronic pain in women.

<http://www.obs-gyn.ox.ac.uk/research/pain-in-women>

www.facebook.com/WomenInPainStudyOxford

‘Evaluating Optimal Vaccine Schedules against Ebola’ (EVOLVE) study

Oxford Vaccine Group study, recruiting now

You are invited to take part in a study investigating new vaccines against Ebola virus disease (EVD). The current outbreak of EVD in West Africa is estimated by the World Health Organization to have caused more than 10,000 deaths to date and is still ongoing. There is no specific treatment or cure for Ebola and an effective vaccine would be an important step in controlling the spread of disease. The study is being run by the Oxford Vaccine Group, part of the University of Oxford.

- ▶ If you are aged 18 to 65 years old and in good health you may be eligible to take part in the study
- ▶ We will provide reimbursement for your time, inconvenience and travel

Interested individuals may attend a screening visit at Oxford Vaccine Group's site to discuss this further and for their suitability for the study to be assessed. If you would like to find out more, you can contact Oxford Vaccine Group on 01865 857420, via e-mail info@ovg.ox.ac.uk or visit their [website](#).

This study is being run by the Oxford Vaccine Group, part of the University of Oxford and is funded by Crucell Holland BV.

Seeking PAID participants for psychology study

The Department of Experimental Psychology is seeking native English speakers aged 18+, for a study investigating how humans understand and process short stories about common social situations.

You will be asked to come to the Experimental Psychology department to take part in several computer-based psychology tasks, which will not take longer than 90 minutes. You will be compensated £15 for your time.

To participate, or for more info, please email oxford.stories.experiment@gmail.com

Healthy volunteers and depressed individuals required for brain scanning study

The Department of Psychiatry are looking for both healthy volunteers and depressed individuals aged 18–50 to take part in a brain scanning study. The study compares brain activity in people who are depressed, and in people who are not depressed and investigates how an antidepressant medication (bupropion) affects information processing. The study involves two brain scans using magnetic imaging (MRI) which are completed before and after taking bupropion. Please note that healthy volunteers will NOT take the bupropion.

Currently, we are particularly looking for healthy volunteers in their late 30's and above who would be able to attend the two MRI scans at The Oxford Centre for Magnetic Resonance Imaging during normal working hours.

For information in confidence, with no obligation to participate, please contact:

Annabel Walsh

bupropion.study@psych.ox.ac.uk



01865 226464

Participants will be reimbursed for their time and expenses

REC Number: 13/SC/0569

Healthy volunteers needed for vaccine study testing the effectiveness of two Ebola vaccines

The Jenner Institute, part of the Nuffield Department of Medicine, is looking for healthy volunteers to take part in a vaccine study testing the effectiveness of two Ebola vaccines. If you are aged 18–50 and are in good health, you may be eligible to participate. The study involves a number of visits to their outpatient clinic, over a 7 month period. Volunteers are compensated for their time and travel.

To find out more [email](#) the Volunteer Co-ordinator, call 01865–857406 or visit their [website](#).



The Oxford Vaccine Centre Healthy Volunteers Database

The Oxford Vaccine Centre is one of the largest clinical trial groups in the UK, conducting studies of new vaccines against key global diseases including malaria, tuberculosis, HIV, meningitis, typhoid and hepatitis C.

Healthy volunteers interested in taking part in Oxford Vaccine Centre clinical trials can be added to a database to receive regular updates of studies currently recruiting volunteers at the Oxford Vaccine Centre. If you would like to be added to this database, please see <http://www.ovg.ox.ac.uk/lists/?p=subscribe>



Other Items of Interest

Oxonbike cycle hire scheme expands to the Science Area

To help improve connections between the Science Area, the Headington hospital sites and the Old Road Campus an Oxonbike cycle hire station will be installed in the Science Area on 8 June 2015 in Hinshelwood Road outside the building for Physical & Theoretical Chemistry Laboratory, South Parks Road.

Details are at <http://www.oxonbikes.co.uk/Info.aspx>.

OxUH Trust unveils new bike docks as part of wider Oxford scheme

Oxford Health NHS Foundation Trust (OHFT) has formally unveiled its new bike docks as part of Oxford's growing version of the 'Boris bike' scheme.

The trust successfully applied for funding from Oxfordshire County Council to have 22 loan bikes and accompanying docking stations fitted as part of the Oxonbikes scheme at its three largest city sites - Warneford Hospital, Littlemore Mental Health Centre and Chancellor Court.

Additional matched funding was also received from the University of Oxford for the new bikes at the Warneford site, where the university has its Department of Psychiatry.

You can watch a video on the benefits of using bikes to travel between OxUH Trust sites [here](#).

Cardiothoracic Surgery: Survey for medical students

Share your views on cardiothoracic surgery as a speciality and as a potential career

Medical students are invited to share their views on cardiothoracic surgery. You do not need to have a strong interest in the speciality. The survey is being conducted by Dr Benjamin J Snowden and Mr Michael Gooseman from the Department of Cardiothoracic Surgery, Hull and East Yorkshire Hospitals NHS Trust.

The survey can be completed [here](#).

For further information on the survey or for advice on how to gain more experience in cardiothoracic surgery please contact [Dr Benjamin J Snowden](#) or [Mr Michael Gooseman](#).

The Global Response to Ebola: Implications for Future Drug & Vaccine Development

Wednesday 15 July, Saïd Business School

Join Oxford Biotech for this first-of-its-kind summit at which world-leading Ebola and medical experts will be discussing the various efforts that have been undertaken in the last twelve months to combat the disease.

Come and join the discussion on how entrepreneurs, academics, industry professionals and governments can learn lessons from the collaborative approach used to fight Ebola, and how this can lead to revolutionary new approaches in drug discovery and development.

After the event there will be a chance to talk with our high profile speakers and sponsors in a relaxed atmosphere.

Attendance is FREE to all [OB Members](#) for further information and to register [click here](#).



Diagnostic Evidence Workshop

Thursday 1 October 2015 to Friday 2 October 2015, Worcester College, Oxford

The NIHR Diagnostic Evidence Co-operative (DEC) Oxford two day course on diagnostic test development, evaluation and regulation will be held at Worcester College on Thursday 1 and Friday 2 October 2015.



This course is aimed at all professionals working on diagnostic tests including people working in industry, academia, funding and regulation. During these two days we will provide you with the latest information on what evidence is needed to obtain regulatory approval, how NICE evaluates new diagnostic technology and how to collect evidence to support adoption in routine clinical practice. In addition we will teach you about different study designs including quality assessment and where to look for funding opportunities.

The course combines talks with hands-on activities. To stimulate interactive discussions and maximise the learning experience the number of places for this course are limited to 25.

For further information and to register [click here](#).

EMBO Conference: Cell therapy today: Achievements, hopes and hypes

9-12 Sep, Manchester UK

Registration and Abstract deadline: 31 July

Stem cell therapy has saved hundreds of thousands of lives since the establishment of bone marrow transplantation half a century ago but still faces significant hurdles for tissues other than blood and epithelia.

Notwithstanding the many difficulties, clinical trials are ongoing that are providing critical information to refine protocols and implement tools aimed at achieving significant clinical efficacy.

At the same time, many poorly controlled or uncontrolled trials are also taking place, muddling the picture and often unjustifiably raising patient expectations and hopes.

Furthermore, the ethical implications of these therapies and their future impact on the economics of health provision are likely to be significant.

This EMBO Conference will focus on the clinical translation of stem cell based research, current trials, pre-clinical work as the foundation for future ones and the ethical and economical impact of these novel therapies.

Major experts in stem cell translational medicine, leading clinicians running these trials, as well as bioethicists and economists will convene to discuss, learn and exchange views on this rapidly evolving and still partly controversial field.

For further information, please see <http://events.embo.org/15-cell-therapy/>

Nominations open for Oxford AHSN partnership award

Deadline Mon 3 Aug

The Oxford AHSN is working with [OBN](#) for a second year in sponsoring the OBN AHSN Award for the best public-private collaboration. We are looking for nominations from across the NHS, universities and industry demonstrating effective joint working. The work should ideally have started during 2014/15. The first winner of this award in 2014 was the [collaboration between the University of Cranfield and Bedford Hospital on a diagnostic tool to measure bone density in the community](#).

Nominations should be submitted to megan.turmezei@oxfordahsn.org by Monday 3 August. Please include key contacts (names, positions, emails) together with a brief outline of the collaboration and outcomes achieved so far (maximum 750). A shortlist will be drawn up and the winners announced and presented at the OBN annual awards dinner on 1 October. Please note that material from the shortlisted nominations may be used in OBN and AHSN publicity material. Please indicate in your nomination if this should NOT happen.