

WELCOME

From Professor Alastair Buchan, Head of the Medical Sciences Division and Dean of the Medical School

We want to wish you all a very merry holiday season and thank all staff and students for their continued efforts throughout 2013. In particular, I would like to thank everyone who's been involved in the REF submission over the past couple of years. It has required a considerable amount of work from many people, and I thank you all for the time you've given to this initiative.

I'm pleased to announce that last week the University, in partnership with Oxford University Hospitals NHS Trust, Oxford Health NHS Foundation Trust and Oxford Brookes University, received Academic Health Sciences Centre (AHSC) designation from the Department of Health ([see related news item](#)). This will provide the Division with further opportunities for collaboration in research and in healthcare improvements, and also encourage multidisciplinary education, training and healthcare delivery for the benefits of the wider community.

In order for us to make sure relevant information gets to you in a timely manner, and that this e-newsletter continues to be readable (and not too long), we've decided to deliver it monthly from January 2014. It will generally be sent to you on the second Monday of the month. Please see the item below for the up to date [delivery schedule](#) and [copy deadline](#).

See you in 2014!



SIXTY SECONDS WITH ...

Jane Dale, Senior Assistant Registrar (Education)



In this month's issue, Jane Dale, Senior Assistant Registrar (Education), tells us about her role and the work of the education team she leads.

Outside of work, Jane takes on completely different roles, and was most recently spotted playing the Duke in 'Measure for Measure' at The Victoria in Swindon.

Tell us a little about your role

As the Senior Assistant Registrar (Education) I head up the Medical Sciences Office (MSO) team responsible for educational standards, policy and development across the Division. Working closely with the Associate Head of Division (Education), Professor David Paterson, I'm responsible for the development and communication of divisional strategy and policy for education; act as the quality assurance lead for the Division; evaluate and advise on proposals for new initiatives in education such as new Masters courses; and have overall responsibility for the delivery of division-wide academic support services. [Read more...](#)

BOARD BUSINESS

In this regular feature, Dr David Bryan, Divisional Secretary, provides a summary of the Medical Sciences Board's activity

At its meeting earlier this term, the Medical Sciences Board:

(1) Noted information on how to recognise and manage conflicts of interest in relation to Board and committee business;

(2) Noted the successful outcome of recent Athena SWAN applications and the consideration being given in the Steering Group to how best to prepare for applying for 'overall' Silver status for the Division's departments;

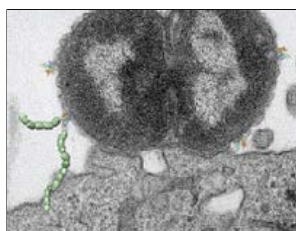
(3) Agreed to recommend to Council that the Department of Primary Care Health Sciences be re-named the Nuffield Department of Primary Care Health Sciences (a proposal that has since been adopted);

(4) Received reports from its Information Technology and Finance and Physical Capital Committees.

[Read more...](#)

LAB TALK

In this issue of Lab Talk, Professor Susan Lea, Statutory Chair of Microbiology, talks to us about the work going on in her lab, at the Dunn School of Pathology



All the work in the lab is focussed around using structural information to tell us something about medically important biological systems – the majority of the projects focus on the point of first contact between pathogens and their hosts. [Read](#)

INTRODUCING RESEARCH SERVICES

Research Services work in partnership and together with colleagues in the Academic Divisions, Departments,



Research Facilitators, Isis Innovation and the University Administration and Services (UAS) to provide comprehensive support to researchers across the research lifecycle.

This article explains the specific support available to staff across the Medical Sciences Division.

[more...](#)

[Read more...](#)

ATHENA SWAN NEWS

The National Perinatal Epidemiology Unit (NPEU) are the first silver award holders in the Division. In addition to planning activities for future recruitment and advancement of women, a Silver department awards recognises that the department has taken action in response to challenges previously identified (within or without the Athena SWAN process) and can demonstrate the impact of the actions implemented.



Maria Quigley, the Athena SWAN Academic Lead for NPEU tells us about the good practice in NPEU and preparing the Silver Application.

[Read more...](#)

LIBRARY NEWS

In this issue:

[Open Access in Drug Discovery](#)

[New Elsevier Online Journals Available from January](#)

[Now Open – Great Medical Discoveries: 800 years of Oxford innovation](#)



INFORMATION SECURITY UPDATE

All University of Oxford staff and students have a responsibility to ensure that information that they hold and use is handled appropriately. Find out more about the university's online module on Information Security Awareness, Whole Disk Encryption (WDE) and FAQs on Information Security.

[Read more...](#)

2014 SCHEDULE

In 2014, *OxfordMedSci News* will be delivered to you monthly, generally on the second Monday of each month (Please see [2014 Delivery Schedule](#) for delivery dates).

OxfordMedSci News is delivered to all staff and students in the Medical Sciences Division and we encourage you to use this newsletter to advertise important updates, opportunities of interest, news and events etc. to our community. If you would like to submit items for consideration, please send details to communications@medsci.ox.ac.uk, one week before the delivery date (Please see [2014 Copy Deadlines](#)).

USEFUL LINKS

Find out more about what's happening across the Division:

[In the News](#)

[Current Seminars and Events](#)

[Past OxfordMedSci News issues](#)

Do you have news or events that you would like to promote? If so, please contact [Alison Brindle](mailto:Alison.Brinkle@medsci.ox.ac.uk), Divisional Communications Manager.

OPPORTUNITIES AND UPDATES

Important Updates

[Business Development Survey](#) If you are interested in finding out more about Business Development or already have a project that you would like to discuss, please complete the online form so that they can match you with any relevant opportunities

[Clinical DPhil Paths Study](#) Clinical DPhil Paths is a study about the career plans of clinical DPhil students and is being conducted by the Oxford University Clinical Academic School (OUCAGS). Survey now live

[Experts wanted for Horizon 2020](#) Biggest EU research and innovation programme yet. Now accepting applications

[Research Support, IT Services](#) Ken Kahn and Howard Noble, who work for the Research Support team of Academic IT, a group within IT services, would like to offer their services to your department

[Introduction to the Oxford Academic Health Sciences Network \(OAHSN\)](#) Wednesday 18 December 2013 from 17.30, Oxford Science Park

[Oxford University Hospitals](#) All MSD staff and students are invited to become members of the Trust and can stand for election to the Council of Governors

[Concordat on Openness in Animal Research](#) Public consultation now open, and will run until 5pm on Wednesday 16 December 2013

Funding Opportunities

[Medical Research Fund](#) To support research conducted in the clinical departments of the Medical Sciences Division. Hilary Term deadline: Monday 27 January 2014

[John Fell Fund](#) Application deadline 12pm, Wednesday 15 January 2014

[Institutional Strategic Support Fund](#) The call for expressions of interest for 2013–2014 ISSF funding is now open

[OUCAGS funding to support Clinical Lecturers with caring responsibilities](#) 2014 scheme now open

[Novo Nordisk postdoctoral fellowship programme](#) Novo Nordisk has established an international postdoctoral fellowship programme with the University of Oxford to support research within the fields of diabetes and metabolism

[George Herbert Hunt Travelling Scholarship announced](#) Applications are invited for the 2014 George Herbert Hunt Travelling Scholarship to support travel abroad for clinical study or research. Deadline: Friday 21 February

[Nuffield Oxford Hospitals Fund](#) Applications deadline Friday 31 January 2014

[British Medical Association \(BMA\) Research Grants](#) Apply online from Tuesday 10 December 2013. Application deadline is Friday 14 March 2014

OneStart competition For aspiring life science entrepreneurs aged 35 and younger. £100k cash prize (non-dilutive: you keep 100% IP). Application deadline: Sunday 15 December

Engagement Opportunities

Public Engagement Training Oxford Sparks (www.oxfordsparks.net) is pleased to announce a new series of training courses in public engagement and science communication

Oxfordshire Science Festival Interested in public engagement? Oxfordshire Science Festival is looking for volunteer scientists

Wellcome Trust Public Engagement Funding Researchers are now able to ask for funds specifically for public engagement events related to their grant application

Wellcome Trust Blog Public Engagement for Researchers: Science Festivals

Wellcome Trust Engagement Fellowships These fellowships aim to support and develop upcoming stars in public engagement with science. Deadline: Friday 21 February 2014

Communicating your Science A Genetics Society Workshop, Wednesday 23–Friday 25 April 2014. Application deadline: Monday 3 March 2014

SET for Britain 2014 Poster Competition Calling all early-stage researchers undertaking exciting projects in science. Win up to £3000. Closing date for entries: Friday 20th December

The Conversation A new journalism project featuring content from the sharpest academic minds

Other Items of Interest

Clinical Vaccine Trials The Jenner Institute are developing vaccines against major global diseases and want healthy volunteers to take part in trials of them

Oxford Learning Institute – Principal Investigators Programme Free PI seminar programme targeted at early career PIs, who manage staff, or plan to do so, and at those researchers on the verge of becoming PIs

Oxford Research Staff Society Family Brunch Join OXRSS for a family brunch

Oxford TRANSlational medicine For StudEnts (TRANSFuSE) A journal club and society for academic medicine at the University of Oxford

EuroScience Open Forum, ESOF 2014 Copenhagen, Saturday 21–Thursday 26 June 2014. For young (aspiring) researchers, including PhD candidates and master students

AND FINALLY...



Biochemistry's Dr Alison Woollard will deliver this year's CHRISTMAS LECTURES at the Royal Institution. The demonstration packed, three-part series called *Life Fantastic* will be aired on BBC Four over the festive period. Dr Woollard will uncover the remarkable transformation of a single cell to a complex organism and answer some of the most profound questions about life itself: where do we come from? Can we live forever?

[CHRISTMAS LECTURES at the Royal Institution](#)

Related news: [Alison Woollard at the 2013 CHRISTMAS LECTURES](#)

Image: Paul Wilkinson

Sixty Seconds with ...

Jane Dale, Senior Assistant Registrar (Education)

In this month's issue, Jane Dale, Senior Assistant Registrar (Education), tells us about her role and the work of the education team she leads. Outside of work, Jane takes on completely different roles, and was most recently spotted playing the Duke in 'Measure for Measure' at The Victoria in Swindon.

Tell us a little about your role



As the Senior Assistant Registrar (Education) I head up the Medical Sciences Office (MSO) team responsible for educational standards, policy and development across the Division. Working closely with the Associate Head of Division (Education), Professor David Paterson, I'm responsible for the development and communication of divisional strategy and policy for education; act as the quality assurance lead for the Division; evaluate and advise on proposals for new initiatives in education such as new Masters courses; and have overall responsibility for the delivery of division-wide academic support services.

A key part of my role is liaison with Heads of Department, Directors of Study, academics and administrators, as well as colleagues in the wider collegiate University. My responsibilities also include co-ordinating the annual student number planning, fees and student load exercises. Representing Medical Sciences, I serve on a number of University bodies including the Quality Assurance Sub-Committee of Education Committee, the Student Systems Programme Board, and the Officer Sub-Group of the Joint Fees and Student Support Advisory Group. I am secretary of the Divisional Board's Education Policy and Standards Committee (EPSC). Other key education committees include the Graduate Studies Committee, Undergraduate Studies Committee, and Audit (quality assurance) Sub-Committee.

And what about your team's role?

The education team in the MSO has a very wide range of responsibilities, with a strong ethos of service to the academic community in MSD. Being in a position to advise and support departmental colleagues and students in relation to policy and procedure is perhaps the most rewarding aspect of our role. The Graduate School team's work includes providing information to prospective applicants and current students, administering the annual graduate funding competition and associated funding streams, the Doctoral Training Centre (structured doctoral programmes), graduate skills training, student casework, and the administration of research student progression and assessment. Quality assurance work, which covers graduate and undergraduate provision includes course reviews and annual review of examiners' reports; advice on the development of new course proposals, course revisions and changes to examination regulations; and supporting the process of external review of provision, such as the General Medical Council (GMC) and the Quality Assurance Agency (QAA). The team co-ordinates consultations with Departments and course committees on a wide range of education policy issues.

What major activities are coming up this academic year?

Key priorities for the current academic year include: preparing for a Doctoral Training Partnership visit by the Medical Research Council (MRC), and for a quality assurance visit by the GMC in the latter part of 2014 (involving Pre-Clinical, Clinical and Graduate Entry Medicine); a number of course reviews; developing the Graduate School for on-course students, and the funding competition; student number planning developments, and in particular further work to support the case for an increase in PGR places for MSD; contributing to the development of the new MSD website, and to the implementation of the new student system (SITS).

What keeps you busy outside work?

I am completely stage struck and if I'm not actually in a production then I'll be rehearsing. My theatre group likes a challenge, and we do everything from Greek tragedy, through Shakespeare to contemporary dramas and comedies, usually on fairly controversial subjects. My 13 year old daughter shares my passion for the performing arts and its great fun performing with her. I also have a strong interest in archaeology, and when not on stage can often be found in a muddy field on my hands and knees with a trowel.

Useful Links:

[Medical Sciences Graduate School](#)

[Medical Sciences Doctoral Training Centre](#)

Board Business

In this regular feature, Dr David Bryan, Divisional Secretary, provides a summary of the Medical Sciences Board's activity

At its meeting earlier this term, the Medical Sciences Board:

- (1) Noted information on how to recognise and manage conflicts of interest in relation to Board and committee business;
- (2) Noted the successful outcome of recent Athena SWAN applications and the consideration being given in the Steering Group to how best to prepare for applying for 'overall' Silver status for the Division's departments;
- (3) Agreed to recommend to Council that the Department of Primary Care Health Sciences be re-named the Nuffield Department of Primary Care Health Sciences (a proposal that has since been adopted);
- (4) Received reports from its Information Technology and Finance and Physical Capital Committees.

A particular focus of the Information Technology Committee report was the continued development of policies and procedures to help safeguard Information Security.

Regarding Finance and Physical Capital Committee business, the Board adopted a recommendation to support the acceptance by the University of a capital grant from the Department of Health to establish a Biorepository facility and proposals as to its location and operation. The Board also noted the work being undertaken on the University's capital plan and a report on the Division's financial out turn for 2012–13. It was agreed that the divisional finance team should work more closely with departments to improve the accuracy of recurrent budgeting and forecasting.

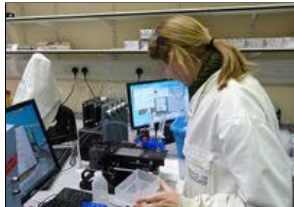
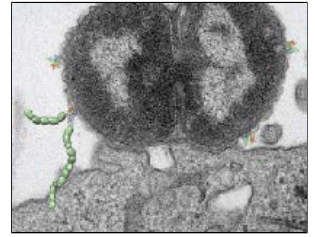
For further information about the board and its committees, please see 'Committee' on the [Medical Sciences Division's intranet](#). Questions should be directed to [Dr David Bryan](#).

Lab Talk

In this issue of Lab Talk, Professor Susan Lea, Statutory Chair of Microbiology, talks to us about the work going on in her lab, at the Dunn School of Pathology

Tell us a little about the work in your lab

All the work in the lab is focussed around using structural information to tell us something about medically important biological systems – the majority of the projects focus on the point of first contact between pathogens and their hosts. The hope is that by understanding the way in which an invading pathogen interacts with its host at the molecular level we will gain insight into the nature and extent of disease caused. In the longer term this may open up therapeutic opportunities, as in our work with Chris Tang (also in the Dunn School) on *Neisseria meningitidis*. In this study, our basic science investigation of immune escape by the bacterium is leading to redesign of a potential vaccine antigen.



How many people are there in your lab?

There are currently fifteen people in the group – eight postdocs from a variety of backgrounds, four graduate students and three undergraduate project students. People come to structural biology from a wide range of backgrounds varying from my own pre-clinical medical background to physics but the majority of the group have studied biochemistry or chemistry.

What's one of the more interesting techniques you are using?

We're very excited about a new technique for studying protein interactions called microscale thermophoresis. The exciting thing about this technique is the potential for working with very small samples, literally the volume that is taken up into a capillary by capillary-action, but with the potential to quantify a wide range of interactions from metal ion binding to protein-protein interactions. We're still playing to discover just what we can do with this but there is huge potential.



How has being at Oxford helped your work/the work of your lab?

Oxford is a great bringing together of easy access to a wide range of equipment (including the nearby Diamond Synchrotron, which is key for our X-ray crystallographic work) combined with a great intellectual environment. Many close collaborators are located physically close, which makes the science run more smoothly and you can always be certain that if you suddenly need to know about a new topic there will be a world expert you can ask within a few metres.



How do you see your field developing in the next ten years? What are the obstacles (technical or otherwise) to getting there?

Building stronger links between clinical and basic science is likely to lie at the heart of further intellectual steps forwards and the biggest difficulties here are the surprisingly different ways in which clinical and basic sciences are often pursued. Added to this is the local issue of geography where the common separation into “down” and “up” the hill of these different approaches means that we don't always get the better integration that the sheer volume of science within a small distance should bring. Various initiatives to try and link research communities around themes that reach across this divide should bring great benefit to all!

Useful Links:

[Susan Lea's Group website \(Dunn School\)](https://sites.google.com/site/sleatest/Home)

<https://sites.google.com/site/sleatest/Home>

Follow on Twitter:

[@S_M_Lea](https://twitter.com/S_M_Lea)

[@NotTheLeaLab](https://twitter.com/NotTheLeaLab)

Would you like your lab/centre/unit to feature in a future issue of Lab Talk? For further information, please contact communications@medsci.ox.ac.uk.

Introducing Research Services

Research Services work in partnership and together with colleagues in the Academic Divisions, Departments, Research Facilitators, Isis Innovation and the University Administration and Services (UAS) to provide comprehensive support to researchers across the research lifecycle. This article explains the specific support available to staff across the Medical Sciences Division.

Who or what is Research Services? We are the team which, together with support from your department, exists to facilitate research at the University and, increasingly, Oxford University Hospitals NHS Trust.



Research services (RS) provides support to the **clinical departments** from the Joint Research Office (JRO) on the Churchill Hospital site. The JRO consists of [Medical Research Services \(MRS\)](#), [Clinical Trials and Research Governance \(CTRG\)](#), the [MSD Business Development Group](#), [OUH NHS Trust R&D Governance and Finance](#), [Oxford Biomedical Research Centre's \(BRC\)](#) management and OUH Contracts and IP team and is increasingly providing an integrated service to facilitate clinical research within both the University and OUH NHS Trust.

Support to the **pre-clinical departments** is provided by the [Science Area Team \(SAT\)](#) in Parks Road.

Please follow the links for contact details.



MRS and SAT provide similar services. Both offices review and submit most grant applications on behalf of the University – some small value applications are submitted via your department. Full guidance of preparing and submitting a grant application can be found [here](#) (pdf). Please note that we **require 5 working days** for the review and authorization of grant applications.

MRS and SAT also undertake **negotiation of all research related contracts**, including confidentiality, material transfer, collaboration, funding and clinical trials agreements. These negotiations are usually bespoke and driven by the context of the research in question, so the earlier you can involve Research Services in a contract negotiation, the better. Further guidance on contracts can be found [here](#).

The offices can also **provide advice on intellectual property issues** and have strong links with Isis Innovation Ltd. Isis should be approached as early as possible if you are considering an application for a translational award. See feature on [translational funding](#) in the October e-newsletter.

Clinical Trials and Research Governance (CTRG)

On behalf of the University, CTRG reviews and approves all applications for University sponsorship, including ethical review for national NHS research ethics committees and all applications for Clinical Trials Authorisations to MHRA and certain applications to the University's ethics committee. On receipt of an application, CTRG will agree timelines for review and return of amended documents. Applicants are advised to **consult with CTRG as early as possible** since it can provide valuable advice on the construction of protocols, consent forms, etc. CTRG provides classroom and internet based Good Clinical Practice (GCP) training which is mandatory for anyone who has involvement in clinical trials of an investigative medicinal product and recommended for those with a role in clinical studies.



CTRG provide a not-for-profit GCP monitoring service, and are currently developing the facility to prepare ethics applications with all the related documents, also as a paid service.



Research Services also provides other central support. To provide comprehensive information about **research funding opportunities** it subscribes to, and provides training on how to get best use from, [ResearchProfessional.com](#). See feature on [Research Professional](#) in the October e-newsletter.

It has a dedicated [EU team](#) which can **provide advice on applications to EU schemes** and through which all EU, including ERC, applications must be made. The EU team also runs workshops promoting specific EU schemes and providing advice on how to structure your applications.

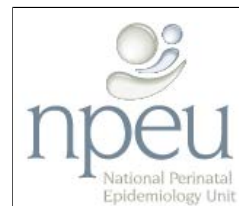
The next workshop is an “**Introduction to Horizon2020 – How to access EU funding**”, which will take place on Monday 16th December at 2pm. Horizon 2020 is the new EU research and innovation funding programme which will run from 2014 until 2020 and has a budget of just over €70 billion. This workshop will be of benefit to PIs, Post Doctoral Researchers and all staff who support research activities. To reserve a place, please complete the Doodle Poll: <http://doodle.com/539x6zqkfe8tzuiiv> by Friday 13th December 2013.

Please visit the websites listed above for further information on all the topics discussed.

Athena SWAN News

Maria Quigley, the Athena SWAN Academic Lead for National Perinatal Epidemiology Unit (NPEU), tells us about the good practice in NPEU and preparing the Silver Application.

The National Perinatal Epidemiology Unit (NPEU) has been committed to promoting a supportive working culture for all staff for many years. **The Athena SWAN process gave the Unit the opportunity to look at the impact of the existing practice, to formalise it and strengthen it further.** Work began in 2011 with senior staff in the Unit familiarising themselves with the process and reviewing and developing relevant policies and practices. In 2012 a **self assessment team** was formed of nine members of the department and online survey was sent to all Unit members in November 2012. The survey results were extremely positive and confirmed that the Unit has a culture consistent with the ethos of Athena SWAN. Based on discussion of the survey results, two common themes were identified which require further improvement and formalisation. Working groups on **Flexible Working and Career Progression** were formed of volunteers from the Unit to address these themes and drafted an action plan for the future. **Unit members have been kept informed of Athena SWAN developments by emails and updates at Unit meetings.**



Our Athena SWAN application and action plan were submitted in April 2013, for Silver level we also needed to submit two case studies. These provided an opportunity to focus on the career progression of two individuals working in the Unit, and to show how our inclusive culture and working practices have enabled them to pursue their careers. The application was reviewed by a panel drawn from; academics, equality and diversity practitioners, human resources practitioners, members of the Athena SWAN steering committee and staff from the Equality Challenge Unit.



In September 2013 we were delighted to learn we had reached our goal of Athena SWAN silver. The panel provided detailed feedback on the application:

The panel felt that the Unit have clearly been working on the issues for some time and are continuing to do strong work, with a desire to do this. They commended that no complacency is shown and that there seems to be an overall maturity of culture and approach to Athena SWAN throughout the Unit.

The panel also noted some good practice from the Unit, for example:

- Our senior management group has recently had Unconscious Bias training through the Oxford Learning Institute to raise awareness of potential bias in the recruitment and development of our staff.
- Established researchers in the Unit involve earlier career researchers in grant application processes by naming co-applicants and/or through shadowing.
- Our induction is comprehensive. All new Unit members have a Unit induction with the Deputy Unit Administrator usually on their first day. This covers many topics including: an information sheet about Unit meetings and seminars on the campus; a hand-out on remote working; and a leaflet on the University's childcare services and childcare vouchers. Everyone is given their own training and development folder which includes information on computing and other courses. New information has been developed on flexible working and work-life balance and will be added to the induction pack.
- Staff can join meetings by teleconference, and all Unit meetings have been held in core hours (10-16:00) for 10 years.
- Our weekly coffee mornings alternate between buildings and days, so that part time staff can attend.

Our action plan was also well received. The panel commended our numerical success measures, which they felt were specific and appropriate. They noted that the full timeframe of our award was covered, with some strong actions planned.

Image

Representatives from NPEU attended a ceremony in London recently to receive their Athena SWAN Silver award.

Links:

[Athena SWAN awards booklet](#)

[National Perinatal Epidemiology Unit \(NPEU\)](#)



Related news:

[Medical Sciences Division receives eight more Athena SWAN awards](#)

Library News

Contents

1. [Open Access in Drug Discovery](#)
2. [New Elsevier Online Journals Available from January](#)
3. [Now Open – Great Medical Discoveries: 800 years of Oxford innovation](#)

Open Access in Drug Discovery

Why is Oxford driving Open Access in Drug Discovery? (Tues 28 Jan 15.00 – 16.00) – Prof Chas Bountra of the Nuffield Department of Medicine discusses the important of open access in drug discovery.

Venue: Medical Sciences Teaching Centre, South Parks Road.

Please book your place online at <https://courses.it.ox.ac.uk/detail/TZO03>

[Top](#)



New Elsevier Online Journals Available from January

We are pleased to announce that the following Elsevier journals will be available online to all members of the University from January 2014 :

- Advances in Anesthesia
- Advances in Chronic Kidney Disease
- Advances in Pediatrics
- Advances in Surgery
- American Journal of Geriatric Psychiatry
- Brachytherapy
- Breast Diseases: A Year Book Quarterly
- Canadian Association of Radiologists Journal
- Clinical Gastroenterology and Hepatology
- Journal of Hand Surgery (American)
- Journal of Medical Imaging and Radiation Sciences
- Journal of the American Academy of Child & Adolescent Psychiatry
- Journal of the American College of Radiology
- Journal of the American Society of Echocardiography
- Ophthalmology: Journal of the American Academy of Ophthalmology
- Practical Radiation Oncology

All titles will be accessible via SOLO or ScienceDirect – <http://www.sciencedirect.com/>

In many cases full text access will also be available via the individual journal Webpage by clicking on the "Access this journal on ScienceDirect" or similar option.

[Top](#)

Now Open – Great Medical Discoveries: 800 years of Oxford innovation

<http://www.bodleian.ox.ac.uk/hcl/news/great-medical-discoveries>

GREAT MEDICAL DISCOVERIES

800 years of Oxford innovation



An exhibition in the Bodleian Library 22 November 2013 – 18 May 2014 ← Admission free

[Top](#)

Information Security Update

All University of Oxford staff and students have a responsibility to ensure that information that they hold and use is handled appropriately.

The University has provided an **online training module (Epic)** on Information Security Awareness that aims to provide you with a better appreciation of some common risks, and will point you to the University's Information Security policies, courses and further information. We recommend that all staff and students take the online module (Epic), which is available [here](#) (follow the 'Online module' link on the right). Courses on Information Security and FAQs are also available on this website.



It is the University of Oxford's policy to ensure that data on portable devices and media such as laptops and USB devices are appropriately protected from unauthorised access. If confidential information is to be taken off site appropriate safeguards, such as encryption must be in place and be appropriately managed. **Whole Disk Encryption (WDE)** is a popular tool used for the prevention of unauthorized access or disclosure of sensitive information as its implementation usually involves encrypting every bit of data on a storage device (e.g. a hard drive or USB stick). Further information on WDE can be found at <http://www.it.ox.ac.uk/infosec/wde/>

For information specifically related to MSD processes, please also see:

[Information security FAQs](#)

[Encryption services](#)

[Encryption FAQs](#)

2014 Schedule

In 2014, OxfordMedSci News will be delivered to you monthly, generally on the second Monday of each month.

OxfordMedSci News is delivered to all staff and students in the Medical Sciences Division and we encourage you to use this newsletter to advertise important updates, opportunities of interest, news and events etc. to our community. If you would like to submit items for consideration, please send details to communications@medsci.ox.ac.uk, no later than 9:00am on the copy deadline dates listed below.

This information is also available on the [MSD intranet](#) (University network only).

Copy Deadline (no later than 9:00am)	Delivery Date
Wednesday 8 January 2014	Monday 13 January 2014
Monday 3 February 2014	Monday 10 February 2014
Monday 3 March 2014	Monday 10 March 2014
Monday 7 April 2014	Monday 14 April 2014
Tuesday 6 May 2014	Monday 12 May 2014
Monday 9 June 2014	Monday 16 June 2014
Monday 7 July 2014	Monday 14 July 2014
Monday 4 August 2014	Monday 11 August 2014
Thursday 4 September 2014 (5:00pm)	Monday 15 September 2014
Monday 6 October 2014	Monday 13 October 2014
Monday 3 November 2014	Monday 10 November 2014
Monday 8 December 2014	Monday 15 December 2014

Important Updates

Business Development Survey

If you are interested in finding out more about Business Development or already have a project that you would like to discuss, please complete the online form so that they can match you with any relevant opportunities

Link to [online form](#)

Clinical DPhil Paths Study

Clinical DPhil Paths is a study about the career plans of clinical DPhil students and is being conducted by the Oxford University Clinical Academic School (OUCAGS). Survey now live

OUCAGS

Oxford University Clinical Academic Graduate School

Clinical DPhil Paths study

For further information, and to take part in the survey, please see <https://weblearn.ox.ac.uk/x/rskybz> (University network only)

Experts wanted for Horizon 2020

Biggest EU research and innovation programme yet. Now accepting applications

The European Commission needs independent experts for Horizon 2020, the new €79 billion EU research and innovation programme. As well as attracting the best academic researchers, the Commission wants to boost the number of specialists from the world of business.

Apart from evaluating proposals for funding, experts are needed for monitoring funded projects as well as programme evaluation and policy development. A broad range of fields are covered including science, technology, innovation, social sciences and humanities, business and more, as set out in full in the [published call](#).

The objective is to ensure that EU grants are awarded only to the best research and innovation proposals, based on a rigorous peer-review process.

Interested candidates are invited to **[apply online](#) as soon as possible** in preparation for the first project proposal evaluations, which are expected to start in early 2014.

The call will remain open for the entire duration of Horizon 2020 (2014–2020).

Experts who registered under the 7th Programme for Research and Technological Development (FP7, 2007–13) and are interested in applying for Horizon 2020 assignments must signal their interest by selecting the new programme in the [online platform](#), and update their fields of expertise.

Full online support including FAQs is available from the same page.

The [REA](#) is expected to select and manage a large share of research and innovation projects under Horizon 2020. The Agency will also manage the evaluation facilities and the support for experts for the whole programme.

Research Support, IT Services

Ken Kahn and Howard Noble, who work for the Research Support team of Academic IT, a group within IT services, would like to offer their services to your department

They have done some interesting work on pandemics with agent-based modelling, and are building expertise in research data management, and would like to share this work with interested staff/students.

For instance, they could present a talk on agent-based modelling, and its application in research, teaching and science outreach which might be useful for groups interested in exploring new tools, making games to help explain scientific concepts, and introducing students to this approach for doing research.

If you would like Ken or Howard to give a talk in your department, please contact them directly at

[✉kenneth.kahn@it.ox.ac.uk](mailto:kenneth.kahn@it.ox.ac.uk) and [✉howard.noble@it.ox.ac.uk](mailto:howard.noble@it.ox.ac.uk).



You can find out more about the services this team provide here: <http://blogs.it.ox.ac.uk/acit-rs-team/about/>

Introduction to the Oxford Academic Health Sciences Network (OAHSN)

Wednesday 18 December 2013 from 17.30, Oxford Science Park



The OAHSN locality meeting for Oxfordshire partners and stakeholders will last about 90 minutes and there will be some light refreshments and an opportunity for networking following the meeting.

For further details, please see <http://www.oxfordahsn.org/events/introduction-to-the-oxford-ahsn-oxfordshire-2/>

Oxford University Hospitals

All MSD staff and students are invited to become members of the Trust and can stand for election to the Council of Governors



Do you have an interest in

health and healthcare?

Would you like to have a say in how our health services develop?

Would you like to be able to elect members to OUH's Council of Governors (or stand to be one)?

Would you like to be invited to events about local developments in healthcare?

If you answer 'Yes' to any of the above, **we want you to be part of our future.**

If you have a contract of employment with the **University of Oxford in a department within the Medical Sciences Division** or hold an **honorary contract award with OUH for at least 12 months**, you can join our staff constituency.

University of Oxford staff belonging to other departments and students can join us as public members.

To join us visit www.ouh.nhs.uk/ft or call 01865 743491 for a membership form.

Membership is free!

Concordat on Openness in Animal Research

Public consultation now open, and will run until 5pm on Wednesday 16 December 2013

Oxford University is one of over 40 organisations that signed a declaration to work towards increased openness and transparency in animal research in October 2012. The organisations included pharmaceutical industry bodies, research funders, medical research charities, and many universities.

The organisation Understanding Animal Research has since put together a working group to come up with a draft Concordat to develop these principles. The draft, hosted on UAR's website, is now open for public consultation.

Please fill in a short [online survey](#) on the draft commitments in the Concordat.



Funding Opportunities

Medical Research Fund

To support research conducted in the clinical departments of the Medical Sciences Division. Hilary Term deadline: Monday 27 January 2014
The Medical Research Fund supports research conducted in the clinical departments of the Medical Sciences Division.

Awards are made via three funding schemes towards the overall goal to promote work in the field of medical research and to extend medical research training opportunities.

The **bridging salary support scheme** accepts applications to augment existing externally funded research activity, by providing short-term (typically 3 months) funding to cover salary costs needed in order to retain experienced research staff between external research grants, and by providing a limited scheme to support maternity leave costs.

The **startup research funding scheme** accepts applications for small (up to £10k) awards in order to enable investigators to obtain pilot data to be used to support larger scale applications for external research funding in future. All non-staff research costs, including equipment, are eligible. Priority will be given to those applications that demonstrate matching funding from other sources. This scheme will not normally provide research support for students.

The **pre-fellowship scheme** accepts applications for short-term (up to 3 months) funding to cover the salary costs of clinicians who will shortly begin an externally funded research training fellowship at Oxford.

Please email applications to the secretary of the MRF Committee mrf@medsci.ox.ac.uk by the deadlines listed below. Awards will only be made with start dates that fall after than the relevant deadline; retrospective applications will not be considered. When emailing your application, please copy in your departmental administrator to demonstrate that your department is aware of the application.

2014 deadlines:

Hilary Term: Monday 27 January 2014

Trinity Term: Monday 28 April 2014

Summer Long Vacation: Monday 28 July 2014

For further information, please see <http://intranet.medsci.ox.ac.uk/processes/research/mrf-medical-research-fund>

John Fell Fund

Application deadline 12pm, Wednesday 15 January 2014



The next deadline for applications to the Fund will be Wednesday 15 January 2014 (noon). This deadline applies to both Main and Small award schemes under the John Fell Fund. The John Fell Fund is intended to foster creativity and a proactive approach to research opportunities in all subject areas, and particularly interdisciplinary fields. It will make seedcorn and start-up grants, and provide staff and funds to stimulate

applications to external agencies. As the Fund is intended to complement external funding bodies, it will not duplicate the purposes of those bodies.

Medical Sciences Divisional contact: jff@medsci.ox.ac.uk

For more information, please see <http://www.admin.ox.ac.uk/pras/jff>

Institutional Strategic Support Fund

The call for expressions of interest for 2013–2014 ISSF funding is now open

Details can be found [here](#) or contact [Dr Jennifer Bardsley](mailto:Dr.Jennifer.Bardsley)

OUCAGS funding to support Clinical Lecturers with caring responsibilities

2014 scheme now open

OUCAGS

Oxford University Clinical Academic Graduate School

Oxford Deanery

For further information, please see <https://weblearn.ox.ac.uk/x/ff2Ls7>

(University Network only)

Novo Nordisk postdoctoral fellowship programme

Novo Nordisk has established an international postdoctoral fellowship programme with the University of Oxford to support research within the fields of diabetes and metabolism

The goal of the new programme is to support the development of a new generation of research leaders while further developing scientific excellence within the field of diabetes.

Novo Nordisk has provided £3.4m of funding to the University which will be used to fund 12 postdoctoral fellows, each for a 3 year period. While the programme is being administered through the Radcliffe Department of Medicine (RDM), any research group in the Medical Sciences Division with a focus on diabetes will be eligible to host a postdoctoral fellow. The fellowships will be advertised in mid Feb 2104 with the first 4 postdoctoral fellows expected to start in the autumn of 2014. Full details on the programme will be available shortly on the [RDM website](#). Any enquiries should be directed to Dr Ruth McCaffrey

([✉ruth.mccaffrey@rdm.ox.ac.uk](mailto:ruth.mccaffrey@rdm.ox.ac.uk)).

“This new programme will support the best young researchers doing novel work in the understanding of diabetes and its treatment. It is these early career researchers that will produce the new ideas, discoveries and advances that will improve diabetes treatment and care in the future. We’re delighted to partner with Novo Nordisk to provide this level of funding and support which will be important in enabling both their research and their career development,” said Professor Hugh Watkins, Head of the Radcliffe Department of Medicine.

A joint steering committee with members from both Oxford University and Novo Nordisk will oversee the programme.



George Herbert Hunt Travelling Scholarship announced

Applications are invited for the 2014 George Herbert Hunt Travelling Scholarship to support travel abroad for clinical study or research.

Deadline: Friday 21 February

The scholarship is of the value of about £3,000 and may be held with another award. This scholarship is offered in every second year.

Candidates should *either* have been admitted to the Degree of Bachelor of Medicine of the University of Oxford *or* have passed the First Examination for the Degree of Bachelor of Medicine of the University and hold a medical degree of another British university qualifying him or her to practise medicine. Current medical students are not eligible to apply; an award can only be made to a medical graduate who fulfils the above criteria.

Candidates are required to submit with their applications a statement of their academic record together with testimonials, and an undertaking that, if elected, they will travel abroad for a period of at least one month for the purpose of clinical study or research in medicine.

In making the award, preference will be given to candidates who intend to engage in the practice of their profession either as surgeons or as general practitioners.

The scholar will be required to complete his or her period of travel within twelve months from the date of election, and within a reasonable period thereafter to submit to the Secretary of the Medical School for the approval of the electors a detailed report of his or her tenure of the scholarship. Payment of nine-tenths of the scholarship will be made shortly before the period of travel, and the remaining one-tenth following the approval of the report. The election will be made on 9 April 2014.

Applications should be sent to Mrs Laura Morgan, Medical School Office, Academic Centre, Level 2, John Radcliffe Hospital, Headington, Oxford, OX3 9DU by **Friday 21 February 2014**.

[Related news](#)

Nuffield Oxford Hospitals Fund

Applications deadline Friday 31 January 2014

NOHF is a registered charity and was originally funded by Lord Nuffield in 1937.

The objects of the charity are for:

“the raising of the standard of the Hospital or Hospitals concerned in order to assist the development and carrying on of the Oxford University Medical School”.

Applicants should note that research projects are not normally funded (other than through Oxfordshire Health Services Research Committee (OHSRC).

The annual funds available are approximately £300,000 and bids are considered and grants awarded by the Trustees in May/June of each year. Recently grants have been awarded in the £20,000 to £40,000 range. The Trustees do not allocate grants for less than £5,000.

For further details and the application form, please see <http://www.medsci.ox.ac.uk/nohf> (University network only)

Please note that applications must meet the criteria for funding and forms should reach [✉Maria Kendall-Belcher](#), at the Medical Sciences Divisional Office, no later than **Friday 31 January 2014**.

British Medical Association (BMA) Research Grants

Apply online from Tuesday 10 December 2013. Application deadline is Friday 14 March 2014

The BMA was among the first of the professional bodies to award grants and prizes to encourage and further medical research. Today, around ten research grants are administered under the auspices of the Board of

Science, all funded by past bequests to the BMA. Grants totalling approximately £500,000 are awarded annually. Applications are invited from medical practitioners and/or research scientists for research in progress or prospective research.



The 2014 research grants will be available to apply for online on the BMA website from 10 December this year – www.bma.org.uk. The application deadline is **14 March 2014**.

Subject specifications for each grant vary. For example, in 2014, research areas range from rheumatism and arthritis, cardiovascular disease and cancer to neurological disorders and clinical outcome measures. For more information on the grants on offer in 2014 and details of how to apply, please see: www.bma.org.uk/researchgrants

If you have any questions about the BMA research grants, or would like to receive alerts about them, please contact Hugh Garnett at info.sciencegrants@bma.org.uk or telephone 020 7383 6755.

OneStart competition

For aspiring life science entrepreneurs aged 35 and younger. £100k cash prize (non-dilutive: you keep 100% IP). Application deadline: Sunday 15 December



What would you do with £100k of non-dilutive capital? Launch your own innovative product? Commercialise a game changing scientific idea or technology? If the answer is yes to any of the above, Welcome to OneStart!

For the second year in a row OBR has teamed up with SR One, the venture arm of GSK, to bring to you: **The World's Largest Life-Sciences Ideas competition!** Come along to our Oxford launch event to hear from previous entrants, SR One representatives and from us!

The OneStart competition is open to aspiring life science entrepreneurs aged 35 and younger, who are living or working in the UK or Europe (you do not have to be a UK or EU citizen). The competition is run in stages and covers four tracks: drug discovery, medical devices, diagnostics and healthcare IT. Entrants can join individually or as a team, and are encouraged to recruit other scientists and business students. In fact, we can even help you find potential team members via our co-founders hub!

Teams are given access to mentors and other resources, and have the opportunity to network with leading pharmaceutical companies, venture capitalists and advisory firms. A judging panel of experts selects the ultimate winner. The **£100k cash prize (non-dilutive: you keep 100% IP)**, lab space and membership to various life science business networks is awarded to the most compelling idea with the potential to impact the lives of patients.

First round submissions opened in October and the application deadline is December 15, 11:59 PST. – See more at: <http://www.oxbridgebiotech.com/onestart/>

Engagement Opportunities

Public Engagement Training

Oxford Sparks (www.oxfordsparks.net) is pleased to announce a new series of training courses in public engagement and science communication

Oxfordshire Science Festival

Interested in public engagement? Oxfordshire Science Festival is looking for volunteer scientists

Wellcome Trust Public Engagement Funding

Researchers are now able to ask for funds specifically for public engagement events related to their grant application

Wellcome Trust Blog

Public Engagement for Researchers: Science Festivals

Wellcome Trust Engagement Fellowships

These fellowships aim to support and develop upcoming stars in public engagement with science. Deadline: Friday 21 February 2014

Communicating your Science

A Genetics Society Workshop, Wednesday 23–Friday 25 April 2014. Application deadline: Monday 3 March 2014

SET for Britain 2014 Poster Competition

Calling all early-stage researchers undertaking exciting projects in science. Win up to £3000. Closing date for entries: Friday 20th December

The Conversation

A new journalism project featuring content from the sharpest academic minds

Public Engagement Training

Oxford Sparks (www.oxfordsparks.net) is pleased to announce a new series of training courses in public engagement and science communication

The following four courses will be running during Hilary Term 2014:

An introduction to public engagement and science communication:

1230–1400, Thursday 9 January 2014

A whistle stop tour which will get you considering the needs of different audiences, meeting researchers who actively engage with the public and thinking about how you might share your research with the public.

For further details and to register: <https://weblearn.ox.ac.uk/course-signup/rest/course/4D00D40104>

Translating your research into a hands-on activity:

1300–1700, Thursday 16 January 2014

This comprehensive introduction to working with hands-on activities will include thinking about how people learn, the value of a hands-on approach and consideration of the practical issues you may face. This course will be delivered in conjunction with the Museum of Natural History.

For further details and to register: <https://weblearn.ox.ac.uk/course-signup/rest/course/4D00D40105>

Narrative skills:

0930–1700, Friday 31 January 2014

Using your own research and interests, learn the essential ingredients of a compelling narrative, how draw an audience into a story and keep them involved, and how to turn your story into an effective 'pitch'.

For further details and to register: <https://weblearn.ox.ac.uk/course-signup/rest/course/4D00D40106>

Social media for communicating science

Date TBC

A practical introduction to using social media tools to develop and maintain an online presence, and how to start defining your audience and developing strategies for engagement.

For further details and to register interest in this course, email: annabel.cook@mpls.ox.ac.uk

These courses will be available to all graduate students and research staff, and are part of a wider range of researcher training opportunities: <https://weblearn.ox.ac.uk/researcher-training>. Further information on training opportunities in public engagement and science communication, at Oxford and further afield, can be found on the Oxford Sparks website: www.oxfordsparks.net/pe_training

Wellcome Trust Public Engagement Funding

Researchers are now able to ask for funds specifically for public engagement events related to their grant application

The Wellcome Trust website states: "If engaging with the public is essential to the ethical conduct of your research (e.g. recruitment of study participants or community advisory panels) then you should include this within your research methodology and cost for it within your research costs."



[Find out more](#) (Wellcome Trust website)

[Related news](#)

Wellcome Trust Engagement Fellowships

These fellowships aim to support and develop upcoming stars in public engagement with science. Deadline: Friday 21 February 2014

The Engagement Fellowships champion the leaders of tomorrow by fostering the most promising upcoming talent of today. They are looking for people with a strong track record of engaging the public with ideas around biomedical science and/or medical humanities, looking to make a step-change in their careers.



Support is provided for up to two years and includes a salary or salary buyout, project costs, training, access to office space and facilities at the Wellcome Trust, and opportunities to work with trust's staff to develop project ideas.

Further details:

<http://www.wellcome.ac.uk/Funding/Public-engagement/Funding-schemes/Engagement-Fellowships/>

SET for Britain 2014 Poster Competition

Calling all early-stage researchers undertaking exciting projects in science. Win up to £3000. Closing date for entries: Friday 20th December

If you're an early-stage researcher undertaking an exciting project in science, maths or engineering, why not consider entering the 2014 SET for Britain competition for a chance to win up to £3000?



SET for Britain is an annual poster competition supported by the RSC along with other learned societies. The event aims to encourage and promote early-career scientists and engineers, as well as raising the profile of science and engineering within the Houses of Parliament.

Prizes are awarded in each scientific discipline for posters which best communicate high level science to a lay audience. Finalists will have the opportunity to present their research at the House of Commons Marquee on 17th March 2013.

The closing date for entries is Friday 20th December and details of how to apply are available on the SET for Britain website: www.setforbritain.org.uk.

Other Items of Interest

Clinical Vaccine Trials

The Jenner Institute are developing vaccines against major global diseases and want healthy volunteers to take part in trials of them

Oxford Learning Institute – Principal Investigators Programme

Free PI seminar programme targeted at early career PIs, who manage staff, or plan to do so, and at those researchers on the verge of becoming PIs

Oxford Research Staff Society Family Brunch

Join OXRSS for a family brunch

Oxford TRANSlational medicine For StudEnts (TRANSFuSE)

A journal club and society for academic medicine at the University of Oxford

EuroScience Open Forum, ESOF 2014

Copenhagen, Saturday 21–Thursday 26 June 2014. For young (aspiring) researchers, including PhD candidates and master students

Clinical Vaccine Trials

The Jenner Institute are developing vaccines against major global diseases and want healthy volunteers to take part in trials of them

If you are aged 18 to 55 and are in good health, get in touch to receive more information.

Participants will be paid compensation for expenses and time put aside to take part. Email

VaccineTrials@ndm.ox.ac.uk or call 01865-857406 or visit the [Jenner Institute website](#). Each

study will require short visits to an outpatient clinic over 4-12 months. A response to this advertisement will be recorded, but carries no obligation to take part.



Oxford Learning Institute – Principal Investigators Programme

Free PI seminar programme targeted at early career PIs, who manage staff, or plan to do so, and at those researchers on the verge of becoming PIs

The free PI seminar programme consists of four focused lunch-time seminars on topics that directly affect the success of a PI, from protecting IP to reaching a wider audience to managing staff. Lunch is provided.

When?

In Hilary Term, we will be holding them at the WIMM building at the JR on 26th Feb, and 5th, 12th, and 19th of March 2014.

Further details

http://www.learning.ox.ac.uk/seminar_desc.php?cat=az&ls=&cc=MAN/PI&page=3&id=2002

EuroScience Open Forum, ESOF 2014

Copenhagen, Saturday 21–Thursday 26 June 2014. For young (aspiring) researchers, including PhD candidates and master students



ESOF 2014

ESOF conferences are a wonderful opportunity to get immersed in Europe's largest general science conference, learn about new discoveries in a large number of fields, meet Nobel laureates, (young) researchers from all disciplines, discuss career perspectives or links of science to business, and participate in lively science policy debates with major European and national politicians. Hundreds of journalists and media will cover it and contribute to the enthusiastic atmosphere. So does the Science in the City Festival. Have a look at www.esof.eu for highlights of previous ESOF meetings.

Oxfordshire Science Festival

Interested in public engagement? Oxfordshire Science Festival is looking for volunteer scientists



Question today; Discover Tomorrow

Oxfordshire Science Festival is looking for scientists who want to fulfil their public engagement requirements and have some fun sharing science with the public. OSF runs from 7 – 23 March 2014 and attracts around 30000 participants. If you want to find out more then contact Renee on renee@oxfordshiresciencefestival.co.uk

Wellcome Trust Blog

Public Engagement for Researchers: Science Festivals

This [blog entry](#) by Nicola Buckley, head of [public engagement at Cambridge University](#) and her colleague Dane Comerford, answers the following questions about Science Festivals:



- How long does it take to plan and organise the various types of events in a festival?
- What do you look for in a proposal from a research team who want to get involved?
- Is there any particular type of event that you recommend to scientists who want to dip a toe in the water of public engagement by offering something at a science festival?
- If you were a researcher, what would you be looking for in a festival, as a sign that it is well run and can give you the support you might need to bring off a successful event?
- What, in your experience, are the kinds of support that festival contributors most often need?
- Are there any common mistakes first timers should try and avoid?
- Are there examples of researchers who wanted to get involved but weren't sure what to do, or who had ideas that didn't quite convince you, who you were able to steer toward something that succeeded?

To find out the answers to these questions, then read the [blog](#)

Communicating your Science

A Genetics Society Workshop, Wednesday 23–Friday 25 April 2014. Application deadline: Monday 3 March 2014

An important part of science is getting your results and ideas across to others, through papers, presentations, theses, grant proposals, conversations and interviews. Your audience may include specialists in the field, those from other disciplines, industry, or the general public.



How can you best communicate your science?

This workshop brings together experts in different fields – writers, broadcasters, publishers, industrialists, computer scientists, and presenters – to help you explore and develop your communication skills. Working together with others on the course you will learn how to structure presentations, develop writing skills, bridge disciplines and have hands-on experience of broadcasting.

The Genetics Society will cover travel, accommodation and meals for successful applicants.

For further information, please see

http://www.genetics.org.uk/Conferences/tabid/84/MeetingNo/GTS_CYS002/view/Conference/Default.aspx

The Conversation

A new journalism project featuring content from the sharpest academic minds

THE CONVERSATION

Academic rigour, journalistic flair

The Conversation requests articles from academics on current news stories, which are then edited by journalists.

The site has commissioned 1,000 articles that have been read 4m times and to which 106 UK universities have contributed, as well as over 100 international universities.

To find out more, please see <http://theconversation.com/uk>

Oxford Research Staff Society Family Brunch

Join OXRSS for a family brunch

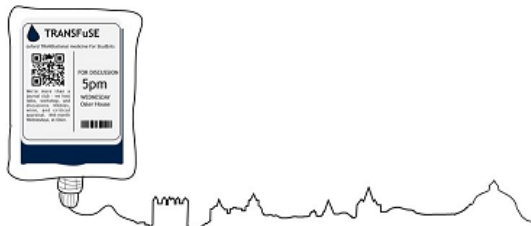


Family brunch for research staff, Saturday 25 January, Summertown, Oxford, organised by OxRSS (Oxford Research Staff Society). Event held in partnership with Barefoot Books

For more details, please see <https://weblearn.ox.ac.uk/x/Lmkqzh>

Oxford TRANSLational medicine For StudEnts (TRANSFuSE)

A journal club and society for academic medicine at the University of Oxford



TRANSFuSE is primarily aimed at clinical students in the medical school, but we welcome all interested parties!

We have monthly sessions with 10–15 participants led by a senior scientist or clinician scientist from the university. Each session revolves around two or three key papers describing an interesting problem or exciting breakthrough with potential implications for clinical medicine, or bench-to-bedside work. We encourage lively debate and enthusiastic exchange of ideas.

We also host a number of events throughout the year, for example the Academic Careers Fair for those considering careers as clinician scientists. Drinks (coffee and EtOH) and nibbles provided.

For further information, please see [Oxford TRANSFuSE](#)